

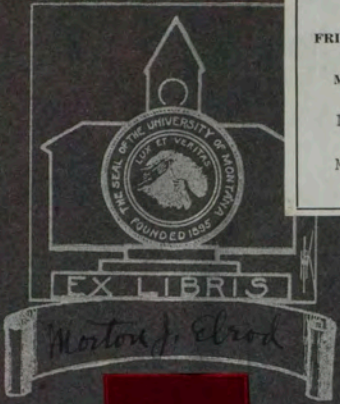
The Sentinel

1 9 1 4



FRIENDS OF THE LIBRARY



Montana State University  
Gift  
Dr. Morton J. Elrod  
from  
Mary Elrod Ferguson









THE  
**Sentinel**  
VOLUME  
TEN



## Old College Chums

Old college chums, be not severe  
With this trite record of a year  
    So full of joy. Stay, do not fling  
    This book aside. Though now it's spring  
Remember winter follows near.  
The days pass by and faces dear  
Each dread September disappear,  
    Making the voice break when we sing  
    "Old  
    College  
    Chums."

Perhaps—perhaps, when winter sere  
Has toughed you, bracing, buoyant cheer  
    These spring-scorned pages yet may bring  
    Reading, the old bell seems to ring  
And, bowed head bared, once more you hear  
    "Old  
    College  
    Chums."  
    GEORGE P. STONE.





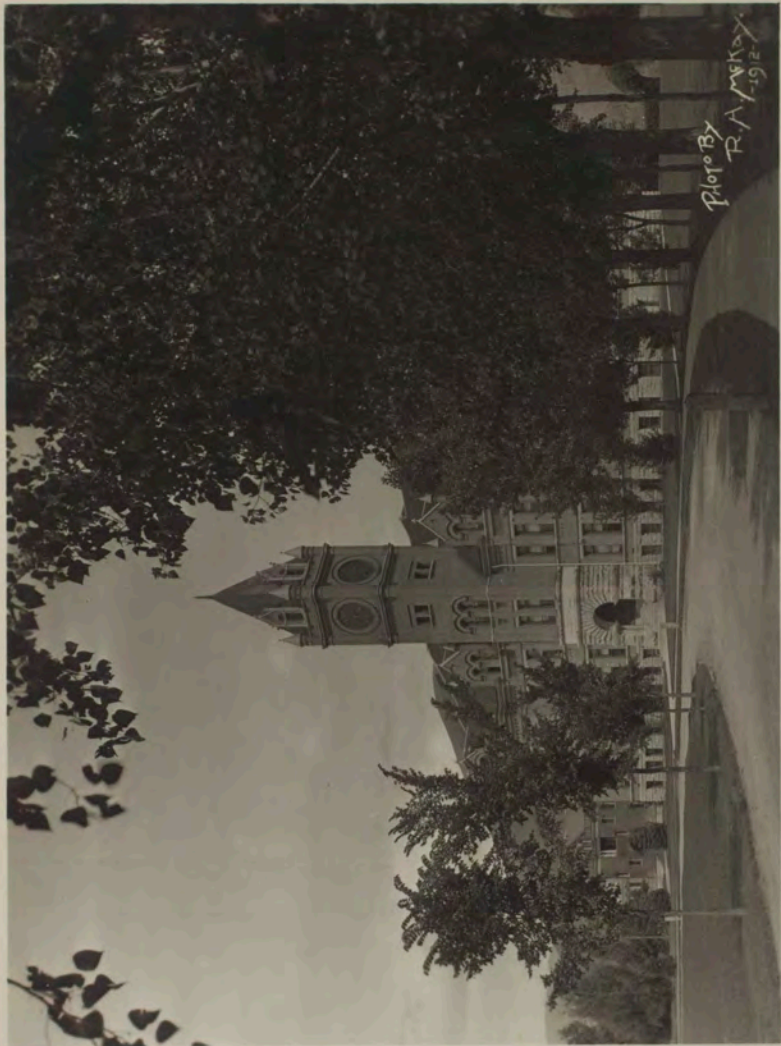
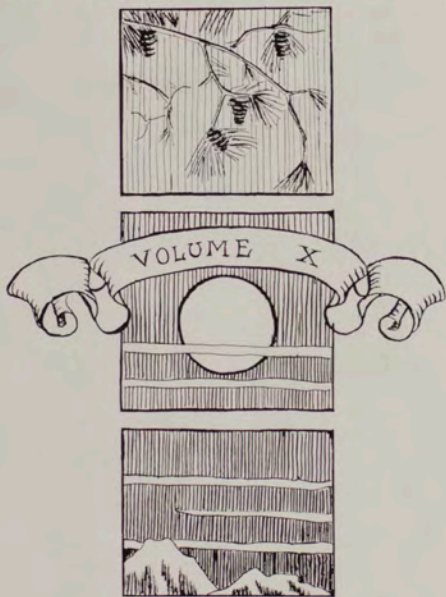


Photo by  
R. A. McKay  
1912

# THE SENTINEL

BEING THE YEAR BOOK OF  
THE UNIVERSITY OF MONTANA



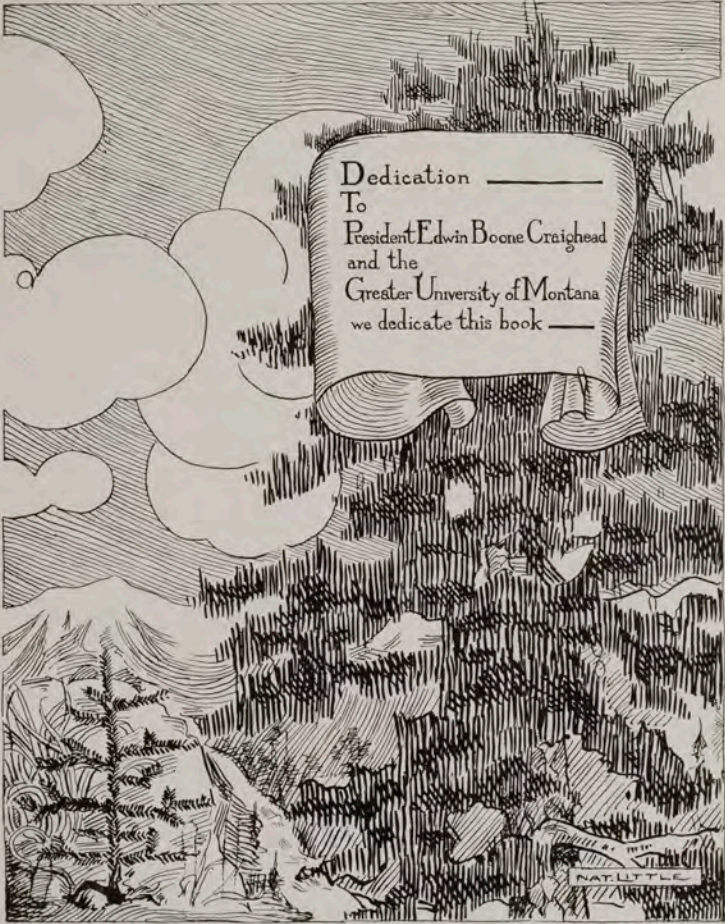
PUBLISHED BY  
THE CLASS OF  
1 9 1 4  
MAY 1913

*M.S.*





Edwin Boone Craighead, Ph.D., LL.D.



Dedication \_\_\_\_\_  
To  
President Edwin Boone Craighead  
and the  
Greater University of Montana  
we dedicate this book \_\_\_\_\_

NAT. LITTLE

## Greeting

To "the fellows  
and the  
girls," whether  
they be  
students, faculty,  
alumni, or  
friends,  
we present our  
salutations;  
may they find in  
this book  
a reflection of  
their own  
loyalty, and of  
their pride  
in

The University of  
Montana

# Sentinel Staff

- |                   |                     |
|-------------------|---------------------|
| NAT S. LITTLE     | Editor-in-Chief     |
| ESTHER BIRELY     | Associates          |
| PAUL GERVAIS      |                     |
| HERBERT KUPHAL    | Business Manager    |
| JOHN SHEEDY       | Associate           |
| BESS RHOADES      | Art Editor          |
| MABLE LEYDEN      | Snapshot Editor     |
| FRED WHISLER      | Athletic Editor     |
| BESS WILDE        | Calendar Editor     |
| JUNE WHITING      | Literary Editor     |
| CARL GLICK        | Local Editor        |
| GRACE SANER       | Assistant           |
| ALICE HARDENBURGH | Organization Editor |

# Contents

BOOK I.	THE UNIVERSITY
BOOK II.	LITERARY
BOOK III.	ATHLETICS
BOOK IV.	ACTIVITIES OF THE YEAR
BOOK V.	ORGANIZATIONS
BOOK VI.	SENT'EL.
BOOK VII.	CALENDAR
BOOK VIII.	OUR ADVERTISERS



N. LITTLE

N. L.

THE SENTINEL

1914.

The University

IT'S FACULTY  
IT'S STUDENTS



## The Montana State Board of Education

### EX-OFFICIO

GOVERNOR SAM V. STEWART . . . . . President  
DANIEL M. KELLEY . . . . . Attorney General  
HENRY A. DAVEE . . . Supt. Pub. Instruction, Secretary

### APPOINTED

H. C. PICKETT . . . . . Term Expires Feb. 10, 1913  
G. T. PAUL . . . . . Term Expires Feb. 10, 1913  
G. T. PAUL . . . . . Term Expires Feb. 10, 1913  
N. R. LEONARD . . . . . Term Expires Feb. 1, 1913  
C. H. HALL . . . . . Term Expires Feb. 7, 1914  
O. W. MCCONNELL . . . Term Expires Feb. 1, 1915  
W. H. NYE . . . . . Term Expires Feb. 1, 1915  
S. D. LARGENT . . . . . Term Expires Feb. 1, 1916  
W. S. HARTMAN . . . . . Term Expires Feb. 1, 1916  
G. A. KETCHAM . . . . . Clerk of the Board

### Executive Board of the University

E. B. CRAIGHEAD . . . . . Chairman (ex-officio)  
J. M. KEITH, Treasurer . . . Term Expires April 19, 1913  
A. L. DUNCAN . . . . . Term Expires April 19, 1915  
J. D. DUNLOP . . . . . Secretary



# FACULTY



EDWIN BOONE CRAIGHEAD, Ph. D., LL.D. . . . . 629 University Ave.

President.

Central College, 1885; Post-graduate studies Vanderbilt University, 1886, Leipzig and Paris, 1886-1888; LL.D., University of Missouri, 1898; Professor of Greek, Wofford College, South Carolina, 1899-1899; President South Carolina Agricultural and Mechanical College, Clemson, S. C., 1895-1897; President Central College, Fayette, Missouri, 1897-1904; President Tulane University, 1904-1912; President, University of Montana, since September 1, 1912. KA. ΦBK

FREDERICK CHARLES SCHEUCH, M. E., A. C. . . . . 319 S. Fifth St. W.

Professor of Modern Languages.

Attended public schools, Barcelona, Spain; graduate Gymnasium, Frankfurt on the Main, Germany; Colegio Sauto Tomas, Barcelona; Secretary U. S. Consulate, Barcelona, 1888; M. E. Purdue University, 1892; A. C. Purdue University, 1894; Purdue Instructor in French, 1894-1895; Secretary of the Faculty, University of Montana, 1895-1909; Professor Modern Languages and Engineering, 1895-1898; Professor Modern Languages, since 1895. ΣX

W. M. ABER, A. B. . . . . 402 Eddy St.

Professor of Latin and Greek.

Graduate from Normal School at Oswego, N. Y., 1872, and from Yale in 1878; Graduate Student at Johns Hopkins, Cornell and University of Chicago; Instructor in Oswego Normal School; Professor of Latin and Greek, University of Utah, 1899-1894; Professor of Latin and Greek, University of Montana, since 1895. ΦBK



## The Faculty

[Continued]

MORTON JOHN ELROD, Ph. D. . . . . 205 S. Fifth St. E.

Professor of Biology.

B. A., Simpson, 1887; M. A., Simpson, 1890; M. S., Simpson, 1898; Ph. D., Illinois Wesleyan University, 1905; Adjunct Professor of Science, Illinois Wesleyan University, 1888-1889; Professor of Biology and Physics, Illinois Wesleyan University, 1889-1897; Director, University of Montana Biological Station, since 1899; Professor of Biology, University of Montana, since 1897. TKF

FRANCES CORBIN, B. L. . . . . 110 S. Fourth St. W.

Professor of Literature.

B. L., Ohio College, 1902; Student in Harvard Summer School, 1904; Teacher of Literature, and Principal Butte High School, 1893-1900; Professor of Literature, University of Montana, since 1900. Penetralla.

JESSE PERRY ROWE, Ph. D. . . . . 319 University Ave.

Professor of Geology.

B. S., University of Nebraska, 1897; M. A., 1903; Ph. D., 1906; Student, University of Oregon, 1893; Graduate Student, University of California, summer, 1901; Graduate Student, Chicago University, summer, 1905; Assistant in Geology, University of Nebraska, 1894-1897; Fellow and Instructor, 1897-1898; Assistant Principal High School, Butte, 1898-1899; Principal Lincoln School, Butte, 1899-1900; Instructor in Physics and Geology, University of Montana, 1900-1901; Director, University of Montana Geological Survey, since 1902; Assistant, United States Geological Survey, 1906; Professor of Physics and Geology, University of Montana, 1901-1910; Professor of Geology, University of Montana, since 1910. 4KF, ΣΣ, ΘNE

LOUIS CLARK PLANT, M. S. . . . . 404 Eddy St.

Professor of Mathematics.

Ph. B., University of Michigan, 1897; Principal, Olive, Michigan, 1889-1891; Overisel, Michigan, 1891-1893; Graduate Student, University of Chicago, 1897-1898, and Summers 1899, 1900, 1902, 1905, 1906, 1907; M. S., University of Chicago, 1904; Assistant in Mathematics, Bradley Polytechnic Institute, 1898-1900; Associate, *ibid.*, 1900-1904; Instructor, *ibid.*, 1904-1907; Associate Professor of Mathematics, University of Montana, 1907-1908, and Professor of Mathematics, since 1908.

**The Faculty**

[Continued]

**JOSEPH HARDING UNDERWOOD, Ph. D., LL.D.** . . . 516 Woodford St.

Professor of History and Economics.

B. A., Western College, 1902; M. A., State University of Iowa, 1904; Ph. D., Columbia University, 1907; LL.D., Oberlin University, 1910; Graduate Scholar in Economics, State University of Iowa, 1902-1903; Fellow in Economics, State University of Iowa, 1903-1904; University Fellow in Sociology, Columbia University, 1904-1905; Student, University of Chicago, 1906; Instructor in English and History, Nora Springs (Iowa) Seminary, 1905-1906; Professor of History and Political Science, Leander Clark College, 1906-1907; Professor of History and Economics, University of Montana, since 1907.

**ARTHUR WILLIAM RICHTER, M. M. E.** . . . 305 University Ave.

Professor of Engineering, in charge of School of Engineering.

B. M. E., University of Wisconsin, 1889; M. E., University of Wisconsin, 1891; M. M. E., Cornell University, 1899; Instructor in Engineering, 1892-1893; Assistant Professor of Steam Engineering, 1893-1896; Assistant Professor of Experimental Engineering, 1896-1902; Professor of Experimental Engineering, University of Wisconsin, 1902-1909; Consulting practice, also Consulting Engineer, Wisconsin State Board of Control, 1908-1909; Professor of Engineering, University of Montana, 1909-1912; Dean of Engineering, University of Montana, since September 1, 1912.

TBH, ΣΣ

**JOSEPH EDWARD KIRKWOOD, Ph. D.** . . . 520 Ford St.

Professor of Botany and Forestry.

A. B., Pacific University, 1898; A. M., Princeton University, 1902; Ph. D., Columbia University, 1903; Fellow in Biology, Princeton University, 1898-1899; New York Botanical Garden, 1899-1901; Assistant in Botany, Columbia University Summer School, 1900; Assistant in Biology, Teachers' College, 1900-1901; Instructor in Botany, Syracuse University, 1901-1903; Associate Professor of Botany, 1903-1907, and Professor of Botany, 1907; Assistant Botanist, Department of Investigation, Continental-Mexican Rubber Co., 1907-1908; Carnegie Institution, Desert Laboratory, Tucson, 1908-1909; Assistant Professor of Botany and Forestry, University of Montana, 1909-1910; Professor of Botany and Forestry, since September 1, 1909.

ΣΣ

## The Faculty

[Continued]

GEORGE FULLMER REYNOLDS, Ph. D. . . . . 1122 S. Higgins Ave.

Professor of English and Rhetoric.

Ph. B., Lawrence University, 1898; Ph. D., University of Chicago, 1905; Teacher of English, Werauwega, Wis., High School 1898-1899; Teacher of English, Chicago Manual Training School, 1900-1901; Fellow in English, University of Chicago, 1901-1902; Head of English Department, Shattuck School, Faribault, Minn., 1902-1909; Assistant Professor of English and Rhetoric, University of Montana, 1909-1910; Professor of English and Rhetoric, since September 1, 1910. G4. TKA.

GUSTAV L. FISCHER . . . . . 503 S. Fourth St. W.

Professor of Music.

Musical Student in Hamberg, Weimar, Buckeburg, and Frankfurt; Member of Theodore Thomas Orchestra, St. Louis Choral Symphony Society and World's Fair Symphony Orchestra; Professor of Music, University of Montana, since September 1, 1910.

JOHN BERTRAND CLAYBERG, LL.B. . . . . San Francisco

Honorary Dean of Law School, Professor of Mining and Irrigation Law and Montana Code Practice.

LL.B., University of Michigan, 1875; Attorney General of Montana, 1889; Commissioner, Supreme Court of Montana, 1902-1905; Non-resident Lecturer on Mining and Irrigation Law, University of Michigan, Columbia University and Montana School of Mines; Honorary Dean of Law School, Professor of Mining and Irrigation Law and Montana Code Practice, University of Montana, since September 1, 1911.

HENRY WINTHROP BALLANTINE, A. B., LL.B. . . . . 404 Connell Ave.

Professor of Law, Acting Dean of the Law School.

A. B., Harvard College, 1900; LL.B., Harvard Law School, 1904; Lecturer in Law, University of California, 1905-1909; Assistant Professor of Law, Hastings College of the Law, 1905-1909; Practicing Attorney in San Francisco, 1904-1911; Professor of Law, University of Montana, 1911-1912; Dean of Law School and "W. W. Dixon" Professor of Law since September 1, 1912. ΔKE.

**The Faculty**

[ Continued ]

**ROBERT NEAL THOMPSON, B. S.** . . . . . 322 Blaine St.

Professor of Physics.

B. S., University of Nashville, 1905; Grammar Principal, Montgomery Bell Academy, Nashville, 1903-1906; Assistant in Biology, University of Nashville, Summer, 1906; Student, University of Chicago, 1906-1909; Acting Associate Professor of Physics, Oberlin College, 1908; Instructor in Physics, Chicago University High School, 1909; Instructor in Physics, University of Montana, 1909-1910; Assistant Professor of Physics, since September 1, 1910.

**ELOISE KNOWLES, Ph. M.** . . . . . South Second Street W.

Instructor in Fine Arts.

Boston Art School, 1892-1893; Ph. B., University of Montana, 1898; Chase Art School, Shinnecock Hills, 1899; School of Education, University of Chicago, 1904; Art Institute, Chicago, 1904; Columbia University, 1909; Ph. M., University of Chicago, 1910; abroad, summers of 1903, 1906 and 1910; Instructor in Drawing, University of Montana, 1898-1910; Instructor in Fine Arts, since September 1, 1910. KAO, Penetralla.

**A. N. WHITLOCK, A. M., LL.B.** . . . . . Rozale Apartments 16

Professor of Law.

A. B., University of Kentucky, 1906; A. M., *ibid.*, 1908; Principal Caldwell High School, Richmond, Ky., 1906; Assistant Professor in English and Assistant in Academy, University of Kentucky, 1906-1908; LL.B., Harvard Law School, 1911; Member of Kentucky Bar since 1909; Assistant Professor of Law, University of Montana, 1911-1912; Professor of Law, University of Montana, since September 1, 1912.

**WILLIAM WEBB KEMP, Ph. D.** . . . . . 432 Eddy St.

Professor of Education.

A. B., Leland Stanford Junior University, 1898; Graduate Student, Leland Stanford Junior University, 1904-1905; Graduate Student, University of California, 1905-1906; Candidate for Ph. D. degree, Teachers' College, Columbia University, 1910-1912; Scholarship, Teachers' College, Columbia University, 1910-1911; Foreign Research Scholar, Teach-

## The Faculty

[ Continued ]

ers' College, Columbia University, Summer, 1911, for research in British Museum and London Minor Archives; Fellowship, Teachers' College, Columbia University, 1911-1912; Instructor, Holt's School, California, 1888-1903; Principal, Longfellow School, Alameda, California, 1903-1904; Instructor, Department of Education, Leland Stanford Junior University, 1904-1905; Principal Mastick School, Alameda, California, 1905-1906; Head of Department of Education and Director of the Training School, State Normal School, San Diego, California, 1906-1910; Professor of Education, Summer School, State Normal School, San Diego, California, 1909 and 1911; Professor of Education, University of Montana, September 1, 1912. Author of "The Support of Schools in Colonial New York by the Society for the Propagation of the Gospel in Foreign Parts"; Contributor to "Cyclopedia of Education" (Paul Monrois, Ph. D., Ed.); Bibliographer Educational Department, New York Public Library, 1910. ΦΔΚ.

THADDEUS LINCOLN BOLTON, Ph. D. . . . . 539 University Ave.

Professor of Psychology.

A. B., University of Michigan, 1889; Ph. D., Clark University, 1894; Teacher in Normal School, Worcester, Mass., 1893-1896; Lecturer, University of Pennsylvania, 1896; Normal School, San Jose, California, 1896-1897; Professor of Philosophy and Education, Washington, Seattle, 1897-1898; Assistant Professor of Psychology, Nebraska, 1899-1904; Professor of Psychology, University of Nebraska, 1904-1910; Special Lecturer, University of Colorado, 1905; Director of Training School, Tempe, Arizona, 1910-1912; Professor of Psychology, University of Kansas, 1910-1913; Professor of Psychology, University of Montana, since September, 1912. ΣΣ.

RICHARD HENRY JESSE, JR., Ph. D. . . . . 539 University Ave.

Professor of Chemistry.

A. B., University of Missouri, 1902; A. M., Harvard, 1907; Ph. D., Harvard, 1909; with Maelinekrodt Chemical Works, St. Louis, 1903-1904; Thayer Scholar, Harvard, 1907; Assistant in Quantitative Analysis, Harvard, 1908; Thayer Scholar and Research Assistant, 1909; Instructor in Chemistry, University of Missouri, Summer Session, 1907; Instructor in Chemistry, University of Illinois, 1909-1912; Associate, 1912; Professor of Chemistry, University of Montana, since September 1, 1912.

ΦΔΘ, ΦΒΚ, ΕΣ, ΓΑ, ΑΧΣ, ΦΑΥ

## The Faculty

[Continued]

W. WALTER H. MUSTAINE, B. S. . . . . 418 Daly Ave.

Physical Director.

B. S., The Centre College of Kentucky, 1899; Yale Summer School of Physical Education, 1905; Chautauqua School of Physical Education, 1906; Harvard Summer School of Physical Education, 1911; Instructor Athletics and Gymnastics, Hogsett Military Academy, Danville, Kentucky, 1897-1901; Physical Director, The Centre College of Kentucky, Danville, Kentucky, 1901; Director Lexington Business Women's Physical Training Club, Lexington, Kentucky, 1905-1912; Assistant Medical Gymnastic Clinic, Chautauqua, New York, 1907-1908; Supervisor, Lexington Public Playgrounds, Lexington, Kentucky, 1908; Director, Physical Education, State University, Lexington, Kentucky, 1902-1912; Director School of Physical Education, University of Montana, since 1912. ΣAE.

MRS. CHARLES W. NORQUIST . . . . . Mezzo Soprano

Instructor in Voice Culture.

Musical Student in Boston, Chicago; Pupil of Professor Ferdinand Lieben, Berlin; Signor Vincenzo Vannini, Florence, Italy; University of Montana, since September, 1912.

PHILIP S. BIEGLER, B. S., E. E. . . . . 930 Poplar St.

Assistant Professor of Engineering.

B. S. E. E., University of Wisconsin, 1905; with Chicago Edison Company, 1899-1906; Instructor in Electrical Engineering, University of Iowa, 1906-1908; Assistant Professor, 1908-1909; Assistant to Electrical Engineer, Washington Water Power Company, 1909-1910; Assistant Professor Electrical Engineering, Purdue University, 1910-1911; Assistant Professor of Engineering, University of Montana, since September 1, 1911. TBH.

WILLIAM R. PLEW, M. S. . . . . 809 Hilda Ave.

Assistant Professor of Engineering.

B. S., Rose Polytechnic Institute, 1907; M. S., 1910; Instructor in Civil Engineering, Rose Polytechnic, 1907-1910; Assistant to City Engineer, City of Terre Haute, Ind., 1907-1909; Engineer Paris Bridge Co., Paris, Ill., 1909; Instructor in Civil Engineering, University of Montana, 1910-1911; Assistant Professor of Engineering, since September 1, 1911.

## The Faculty

[Continued]

MARY STEWART, A. B. . . . . Craig Hall, University Grounds

Dean of Women and Instructor in Languages.

A. B., University of Colorado, 1909; Instructor in State Preparatory School, 1898-1901; Principal of Longmont High School, Colorado, 1901-1905; Instructor in East Denver High School, 1905-1907; Student, Columbia University, summer of 1908; Dean of Women, University of Montana, since 1907. Penetralla.

GERTRUDE BUCKHOUSE, B. S. . . . . 206 S. Fourth St. W.

Librarian.

B. S., University of Montana, 1906; Illinois State Library School, 1906-1901; Special Course in Government Documents, Wisconsin State Library Commission, 1902; Librarian, University of Montana, since 1902. President of State Library Association; American Library Association.

EUGENE F. A. CAREY, B. S. . . . . 522 Rollins St.

Instructor in Mathematics.

B. S., University of California, 1905; Graduate Student, University of California, 1905-1909; Assistant in Physics, 1905-1907; Instructor in Matriculation Physics, Summer Session, 1907, and Assistant in Mathematics, 1907-1909; Instructor in Mathematics, University of Montana, since September 1, 1909. American Mathematical Society.

CHARLES MELVIN NEFF, LL.B. . . . . 526 East Front St.

Professor of Law.

Ph. B., University of Rochester, Rochester, N. Y., 1899; LL.B., Columbia University, 1902; Practicing Lawyer, New York City, 1902-1905; Practicing Lawyer, Colorado, 1905-1912; Professor of Law, University of Montana, since September 1, 1912.

## The Faculty

[ Continued ]

ROBERT JUSTIN MILLER, LL.B. . . . . 236 Eddy St.

Instructor in Law.

A. B., Stanford University, 1911; LL.B., University of Montana, 1913;  
Assistant in Economics, Stanford, 1910; Assistant in History, Stanford,  
1911; Instructor in Law, University of Montana, 1912-1913.

ΦΒΚ. ΔΧ. ΔΣΡ. ΦΑΤ. ΤΚΑ.

CARRIE CADE PATTON, A. B., B. L. S. . . . . 300 University Ave.

Reference Librarian.

A. B., Northwestern, 1909; B. L. S., Illinois State Library School, 1911;  
Assistant in the Library, University of Montana, since September 1,  
1911

ΑΧΔ. ΕΖ

WILLIAM GEORGE BATEMAN, A. M. . . . . 329 Connell Ave.

Instructor in Chemistry.

A. B., Stanford, 1907; A. M., Stanford, 1909; Instructor in Chemistry,  
Stanford, 1908-1910; Professor of Chemistry Imperial Pei Yoog University,  
China, 1910-1912; Instructor in Chemistry, University of Montana,  
since June, 1912.

ΦΒΚ. ΣΞ. Μίμ Καθ Μίμ.

PAUL CHRISLER PHILLIPS, Ph. D. . . . .

Instructor in History.

A. B., Indiana University, 1906; A. M., 1909; Ph. D., University of  
Illinois, 1911; Assistant in History, Indiana University, 1907-1908; Fellow  
in History, University of Illinois, and student in government archives,  
Washington, London and Paris, 1908-1910; Assistant in American History,  
University of Illinois, 1910-1911; Instructor in History, University  
of Montana, since September 1, 1911.

ΣΠΙ.



## The Faculty

[Continued]

GEORGE MERIT PALMER, A. M. . . . . 523 Woodford St.

Instructor in English.

Graduate Illinois State Normal University, 1899; A. B., University of Illinois, 1907; A. M., University of Illinois, 1908; Graduate work, University of Illinois in History, English and Education, 1908-1911; Superintendent of Schools, Averyville, Illinois, 1897-1898, 1899-1901; Teacher of English, Philippine Islands, 1901-1904; Superintendent of Schools, Milaca, Minnesota, 1904-1907; Instructor in English, Academy, University of Illinois, 1907-1909; Instructor in English in Academy and Supervisor of Practice Teaching in English in School of Education, University of Illinois, 1909-1911; Instructor in English, University of Montana, since September 1, 1911. ΔΣΠ, Adelpic Society.

GEORGE H. CUNNINGHAM, B. S., M. E. . . . . 410 Eddy St.

Assistant Professor in Mechanical Engineering.

B. S., Virginia Polytechnic Institute, 1906; M. E., Cornell University, 1908; Instructor in Graphics, Virginia Polytechnic Institute, 1906-1907; Engineering Department of Tennessee Coal, Iron and Railroad Co., 1908-1909; Engineering Department Virginia Bridge and Iron Co., 1909-1910; Assistant Superintendent Power and Mechanical Department Consolidation Coal Co., 1911; Instructor in Mechanical Engineering, University of Montana, since September 1, 1911.

GUSTAVE ADOLPH GROSS . . . . . 512 S. Sixth St. W.

Instructor in Engineering Shops.

Lake Mills (Wis.) High School, 1900; Assistant Foreman, Fargo Creamery Supply Co., 1904-1908; Mechanician, College of Engineering, University of Wisconsin, 1908-1911; Instructor in Engineering Shops, University of Montana, since September 1, 1911.

MARGERY WINNIFRED FEIGNER, B. A. . . . . 315 East Front St.

Cataloguer in the Library.

B. A., University of Montana, 1908; Student, Library School, Simmons College, 1908-1909; Assistant in the Library, University of Montana, since September 1, 1909. Penetralla.

J. D. DUNLOP . . . . . 340 South 6th, E.

Registrar.

### Student Assistants

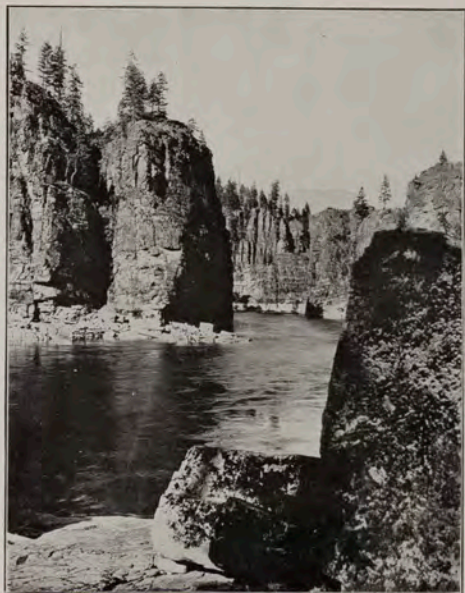
PAUL A. BISCHOFF	Biology Laboratory
HELENE B. BOLDT	Library
LUCIUS E. FORBES	Physics Laboratory
ISABEL A. GILBERT	Fine Arts
CECIL I. KRAMER	Mathematics Reader
MARY P. SHULL	Botany
ROY A. WILSON	Geology Laboratory
ALICE HARDENBURGH	Physical Culture for Women
GLADYS M. HUFFMAN	
RALEIGH GILCHRIST	Storekeepers in Chemistry Laboratory
MILLARD S. NESBIT	
MARY HANSEN	Assistant Registrar
BERNICE OLDRIDGE	Bookkeeper

#### ROBERT HART CARY

Physical Director

BORN	December 15, 1885
DIED	September 19, 1912

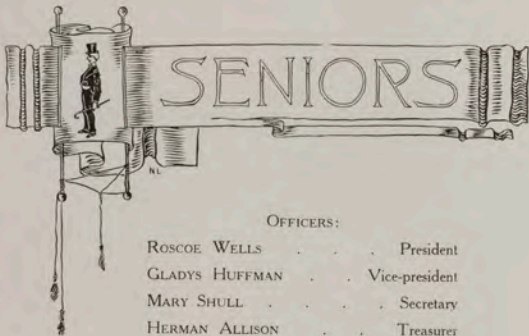
THE SENTINEL  
1914



N.L.

# THE SENTINEL

1914

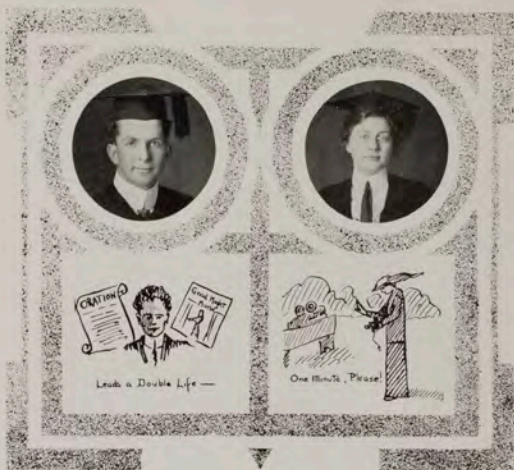


OFFICERS:

- |                          |                |
|--------------------------|----------------|
| ROSCOE WELLS . . . . .   | President      |
| GLADYS HUFFMAN . . . . . | Vice-president |
| MARY SHULL . . . . .     | Secretary      |
| HERMAN ALLISON . . . . . | Treasurer      |

COLORS: Yale Blue and White.

MOTTO: Slow, but Sure.



ROSCOE W. WELLS, B. A.

ECONOMICS.

ΣX: Class Pres. (1) (4); Dramatic Club (4); Class Basketball team (1) (2); Business Manager 1913 Sentinel; Class Treasurer (2); Track Team (1); Manager Oratory (3); Manager Interstate Oratorical Association (2); Junior Prom Committee; University Play (1) (2) (3).

GLADYS HUFFMAN, B. A.

MODERN LANGUAGES.

ΔΓ: Penetralla; Clarkia (1) (2) (3) (4); Cenor (2); Secretary (3); Y. W. C. A. (1) (2) (3) (4); Class Secretary (3); Vice President (4); Art Editor 1913 Sentinel; Kalmia Reporter (2) (3); Local Editor (4); Sextette (1); Orchestra (1) (2) (3) (4); Winner Bonner Music Medal (1); Science Association (2) (3); Pianist Montana Double Quartette (3); Women's Pan-Hellenic Council, President (4).



MARY SHULL, B. S.

ROTARY.

Penetrator; Class Secretary (1); Associate Literary Editor 1912 Sentinel; Junior Prom Committee; German Club (2); Science Association (1) (2); Glee Club (1) (2) (3) 4.

HERMAN ALLISON, B. S.

MATHEMATICS.

Hawthorne (1), (2); Mathematics Club (2) (4); 1912 Sentinel Staff.



Be Real  
But the Sun



An Impressionistic  
Photograph

MILDRED INGALLS, B. A.

MODERN LANGUAGE.

KKK; Penetralla; A. S. U. M. Social Committee (4); Class Secretary (2); Clarkia (1); Y. W. C. A. (1); Dramatic Club (4); Consumers' League (3) (4); Equal Suffrage Club (3) (4); President (4); Associate Editor 1913 Sentinel; Kalmin, Society Editor (3); Associate Editor (4); Junior Prom Decoration Committee; Chairman Hi Jinx Committee (3); Carnival Committee (2) (4); Co-ed Prom, Chairman Committee (3); Floor Manager (4); Sophomore Play.

CECIL KRAMER, B. A.

MATHEMATICS.

ΔΓ; Class Secretary (1); Clarkia (1) (2); Y. W. C. A. (1) (2); Science Association (2); Mathematics Reader (4); Mathematics Club (4).



A Learning



Shall we say

— Toward the left



— Kindred Spirits?

CECIL F. DOBSON, B. S.

ENGINEERING.

ΣΧ: ΜΣΕ: Class President (2);  
Dramatic Club (4); Engineers'  
Club (1) (2) (3) (4), President  
(4); Track Team (1); Football  
(2) (3).

LOUISE E. SMITH, B. A.

MODERN LANGUAGE.

ΚΑΘ: Writers' Club (4); Dramatic  
Club (4); Kaimin, Reporter (2)  
(3); Calendar Editor 1913 Sentin-  
nel; University Play (3); Junior  
Prom Committee.





GLADYS HEYWARD, B. A.

LITERATURE

Oberlin College (1) (2); Clarkia  
(3) (4); Treasurer (4); Writers'  
Club (4); Consumers' League,  
Treasurer (4); Equal Suffrage  
Club (4).

SUZANNE STABERN, B. S.

MATHEMATICS

KAΘ. Sanford University (1) (2);  
Clarkia (3); Writers' Club (4);  
Dramatic Club (4); Assistant Cal-  
endar Editor 1913 Sentinel; Self-  
Government Committee, Craig  
Hall (4).



The Lady with the Mee-Like  
Also with the 4 Kant



Her Childhood Playmate  
(Enlarged)

ALICE MATHEWSON, B. S.  
MATHEMATICS.

L.K.F.; Penetralla Clarkia (1) (2) (3) (4); Censor (4); Y. W. C. A. (1) (2) (3) (4); Cabinet (3) (4); Science Association (1) (2); Secretary (1); President (2); Writers' Club (4); Dramatic Club (4); Local Editor 1913; Sentinel; House President; Crisis Hall (4); University Play (2); Press Club (2) (3); Board of Directors (3); A. S. U. M. Executive Committee (4).

HELEN F. METCALF, B. A.  
HISTORY.

University of Oregon (2); Clarkia (2) (4); Secretary (2); Y. W. C. A. Cabinet (2); Consumers' League (4); 1912 Sentinel Staff.



Leads a Higher Life



GLADYS FREEZE, B. A.

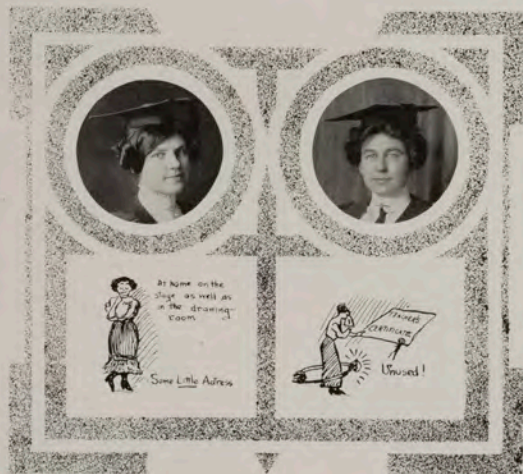
HISTORY.

KAΘ: Pentalla; Vice President A. S. U. M. (4); Class Vice President (2); Clarkia (1) (2) (3) (4); Y. W. C. A. (1) (2) (3) (4), Cabinet (1) (2), Secretary (3), President (4); Consumers' League (4).

CARL E. CAMERON, B. A.

LAW.

ΣΧ: President A. S. U. M. (4); Class President (3); Y. M. C. A. (1) (2) (3), Cabinet (1) (2), Delegate to Convention (2), President (3); Track Team (1) (2) (3), Captain (3); Class Basketball (3) (3); Pan-Hellenic Council (2) (3); Tug of War (1) (2); Literary Editor 1912 Sentinel; Kalmin Reporter (2) (3).



FLORENCE M. MATTHEWS, B. A.

LITERATURE.

ΔΓ: Class Secretary (1); Clarkia (1) (2) (3); Critic (2); Y. W. C. A. Cabinet (3); Dramatic Club (4); Associate Literary Editor 1913 Sentinel; Winner Buckley Oratorical (2); Oratorical Committee (3) (4); Class Play (3); Sophomore Play.

ANNE HUTCHINSON, B. S.

PHYSICS.

Knox College (1) (2); Clarkia (3); Consumers' League (4); Equal Suffrage Club (4)



"Spend - and let who will  
be clever"



The Black & Vepry Co.  
Ltd.

MABEL GARLINGTON, B. A.

MODERN LANGUAGE

Clarkia (1) (2); Y. W. C. A. (1)  
(2) (3) (4); 1913 Sentinel Staff.

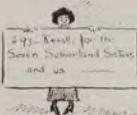
ROYAL D. SLOAN, B. S.

ENGINEERING

ΣΝ: MΣE: Engineers' Club (1)  
(2) (3) (4); President (1);  
Track (1).

# THE SENTINEL

1914.



## ROSE LEOPOLD, B. A.

### MODERN LANGUAGE

Penetralla; Secretary A. S. U. M. (4); Clarkia (1) (2) (3) (4); Sentinel (1), Secretary (2), President (3) (4); Y. W. C. A., Social Committee (4); 1913 Sentinel Staff; Local Editor Kalmu (4); Self-Government Committee (2).

## GLADINE LEWIS, B. A.

### ENGLISH AND LITERATURE

KKI; Penetralla; Clarkia (1) (2) (3); Concor (2); Y. W. C. A. (1) (2) (3) (4); Cabinet (1) (2); Vice President (3); Consumers' League (4); Equal Suffrage Club (4); Organization Editor 1913 Sentinel; Women's Pan-Hellenic Council, Vice President (4); Chairman Junior Prom Invitation Committee.



MRS. GLEN O'NEAL, B. A.

ENGLISH

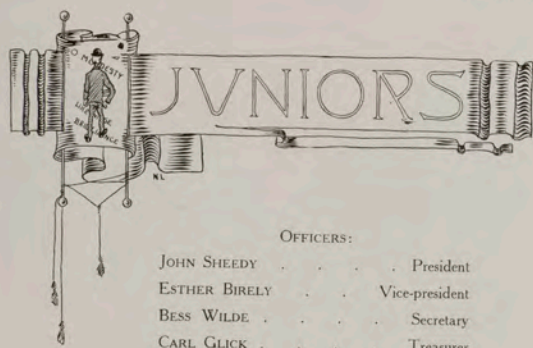
Tulane University (1) (2); University of Michigan, University of Chicago (3); Writers' Club (4).

CORNELIA MCFARLANE, B. A.

MODERN LANGUAGE.

M: Clarkia (2) (3), Critic (3); Dramatic Club (4); Organization Editor 1912 Sentinel; Junior Prom Committee; University Play (2) (3); Orchestra (2) (3) (4); Glee Club (4).

# THE SENTINEL 1914.



OFFICERS:

- |                         |                |
|-------------------------|----------------|
| JOHN SHEEDY . . . . .   | President      |
| ESTHER BIRELY . . . . . | Vice-president |
| BESS WILDE . . . . .    | Secretary      |
| CARL GLICK . . . . .    | Treasurer      |

COLORS: Steel Gray and Maroon.





JOHN SHEEDY

ESTHER BIRELY

GEORGE KLEBE

BESS WILDE



G. WATKINS



JUNE WHITING



CLIFFORD DAY



PAUL GERVAIS



HORACE DAVIS

ALICE HARDENBURGH

CLIFTON JACKSON

FRED WHISLER

N.L.

THE SENTINEL  
1914.



BESS RHOADES



CARL DICKEY



MABLE LEYDEN



NAT LITTLE



H. KUPHAL



GRACE SANER



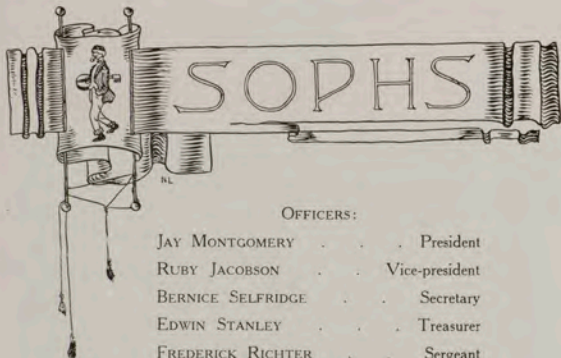
CARL GLICK



PETER HANSEN

# THE SENTINEL

1914



## OFFICERS:

JAY MONTGOMERY	President
RUBY JACOBSON	Vice-president
BERNICE SELFRIDGE	Secretary
EDWIN STANLEY	Treasurer
FREDERICK RICHTER	Sergeant

COLORS: Green and White.

MOTTO: "Big things have little beginnings."

THE SENTINEL  
1914



MONTGOMERY  
BOLDT

JACOBSON  
RICHTER

SELFRIDGE  
OWSLEY

STANLEY  
LEARY



# THE SENTINEL

1914



GILCHRIST  
McGUIRE

SINCLAIR  
McLAUGHLIN

KENNEDY  
TEAGARDEN

FORBES  
HARMON





THE SENTINEL  
1914



WILSON  
BONNER

STEPHENSON  
CONWAY

SHULL  
GWINN

YOUNG  
SHARP



# THE SENTINEL

1914



LEBKICHER

NESBIT

TAYLOR

GILLILAND

HOEL

HUNT

ZERR

BOWMAN



THE SENTINEL  
1914



BORLAND  
MERRIFIELD

HAWK  
JOHNSON

ULINE  
SCHILLING

ADE  
CRONK



# THE SENTINEL

1914



MARSH  
TOPE

CARPINO

WOLFE

McJILTON  
TAYLOR

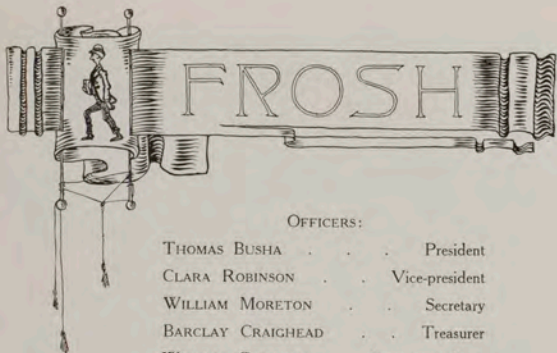


*Freshmen - Sophomore Fight.*



# THE SENTINEL

1914.



## OFFICERS:

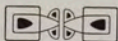
THOMAS BUSHA . . . . .	President
CLARA ROBINSON . . . . .	Vice-president
WILLIAM MORETON . . . . .	Secretary
BARCLAY CRAIGHEAD . . . . .	Treasurer
WILLIAM GRIFFITH . . . . .	Sergeant-at-Arms

MOTTO: Umquam Alterior.

COLORS: Red and White.

# THE SENTINEL

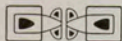
## 1914



BUSHA	METLEN	GAULT	WILSON	MORETON
ROBINSON	SCHROEDER	MURRAY	MOLCHOIR	McCARTHY
CRAIGHEAD	NUTTING	BAUER	DENNIS	BISCHOFF

# THE SENTINEL

1914.

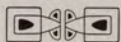


ROWLEY	BUSE	DEHNERT	MACLAY	McPHAIL
MATHEWSON	WOODY	FAUST	SCHUG	McDONALD
MOLCHOIR	BIRDSALL	McMANUS	RICHTER	DARROW



# THE SENTINEL

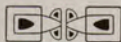
## 1914



POWELL	KELLOGG	CURRAN	SIMON	TEMPLETON
BAKER	JAHN	WRIGHT	STAGG	BECK
DEHLER	CLARK	TABOR	McCALL	LONG

# THE SENTINEL

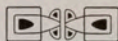
1914.



ROLFE	THOMAS	ROBERTS	LANSING	EVANS
SIMPKINS	DAEMS	READ	CAIN	PINCKNEY
HIGGINS	O'NEAL	CLEMENTS	HUMPHREY	PRIDE

# THE SENTINEL

## 1914



GILLILAND	CARNEY	WRIGHT	SCROGIN	GRIFFETH
KAIN	FOSS	LUDDEN	DEHNERT	SUTHERLIN
BAIRD	GILBERT	ANDERSON	LOGAN	SCHOPER

# THE SENTINEL

1914.



SMEAD

STREIT

THURSTON



GRADUATE STUDENTS

STELLA LOUISE DUNCAN  
HARRIET HART  
MARTHA EDITH ROLFE

SPECIAL STUDENTS

DOROTHEA C. DAVIS  
GUSTAVE ADOLPH GROSS  
MRS. ALICE MARGARET PHILLIPS  
MRS. ELIZABETH W. SKINNER



# THE SENTINEL

## 1914



### OFFICERS

- |                            |                     |
|----------------------------|---------------------|
| A. B. HOBLITT . . . . .    | President           |
| R. H. WEIDMAN . . . . .    | Vice President      |
| D. C. WARREN . . . . .     | Secretary-Treasurer |
| P. L. DORNBLASER . . . . . | Sergeant-at-Arms    |

### First Year Law



CRAIGHEAD	DESCHAMPS	WELLS	WORDEN	BROWN
SPEER	SORENSEN	FRIDAY	SEWELL	ANDERSON



Second and Third Year Law



DORNBLASER

SMITH

CAMERON

KELLY

MERRICK

THOMPSON

MILLER

SMITH





## Not Before the Limelight

### FRESHMEN—

BRANGER  
CHADWICK  
CUMMINS  
EVANS  
GARRIGUS  
SESTAK  
SESTAK  
JANECK  
JANECK  
KEMP  
McLEOD  
METLEN  
ORR  
WENZEL  
WILSON

### SOPHOMORES—

ALLEN  
BAXTER  
HART  
HUNT  
PEPPARD  
RASK  
KETTLEWELL

### JUNIORS—

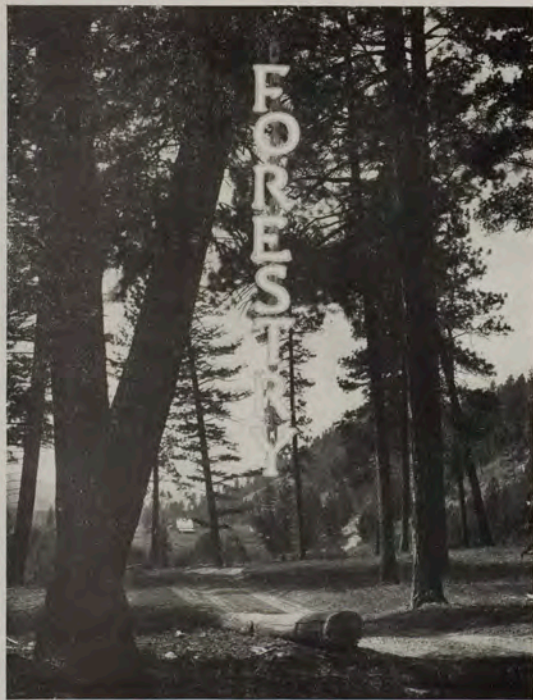
GEORGE ARMITAGE  
CATHERYNE FINLEY  
PATRICK Mc-CARTHY  
PETER RONAN

### LAW—

E. M. BODDY  
GEORGE ROSENBERG  
D. C. WARREN  
H. H. WIEDMAN  
A. B. HOBLITT  
W. J. STREVER

THE SENTINEL

1914



THE SENTINEL  
1914



N.L.

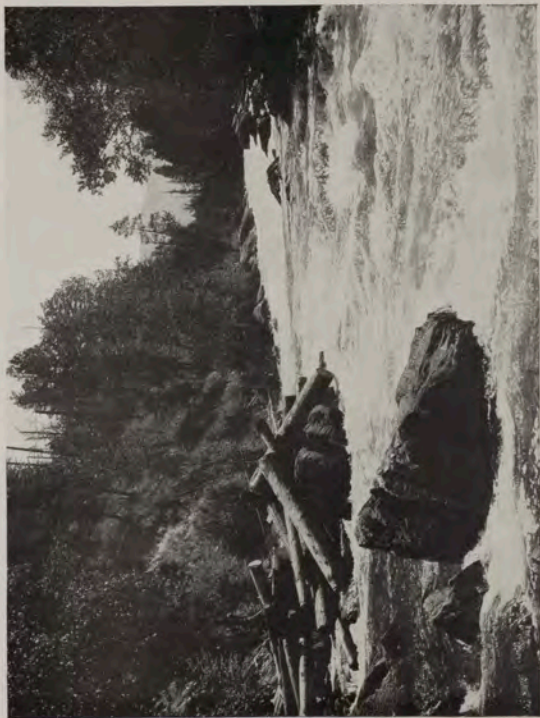
# FORESTERS

A. M. BAUM . . . . . President  
D. F. MCGILL . . . . . Secretary

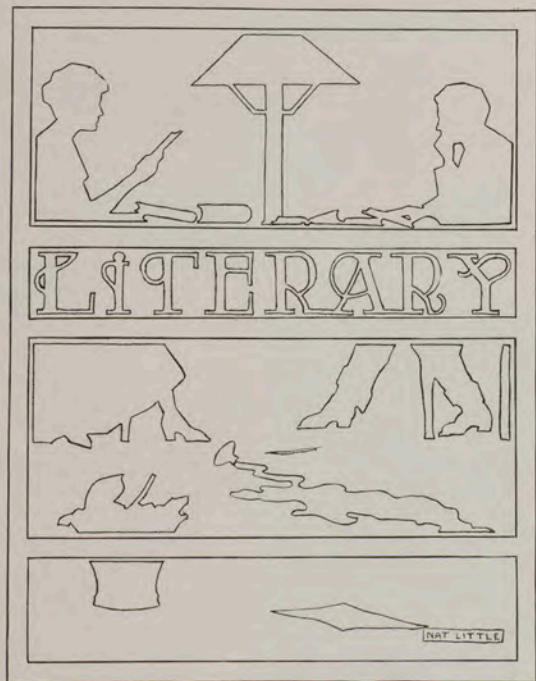
A. M. BAUM  
E. C. DOWD  
S. J. ENSWILER  
R. C. FERRIS  
G. GRIGG  
G. H. HANKINSON  
A. W. HART  
P. KNOWLES  
D. F. MCGILL  
G. A. PERRY  
V. E. THORSELL  
C. H. WRIGHT  
W. H. YOUNG  
H. A. GOODALE



THE SENTINEL  
1914



N.L.



## I Hear the Mountains Calling

Oh, I hear the mountains calling through the grime and glare and heat,  
 Through the lifeless stone and asphalt of the high-walled city street;  
 Through the sky-light in the top-flat, bits of far-alluring blue  
 Speak of heights and breadths and distance stretching into endless view  
 Of still higher, wider, further regions of free, breathful space,  
 Leading into dim, cool canyons where the joy-mad waters race;  
 Tumbling, roaring, plunging, crashing, leaping, laughing on they go  
 From their childhood in the mountains to the calm, old stream below.  
 Oh, I hear the mountains calling and the voices comes from the deeps



Of the little glens and gullies where the  
 timid wild flower peeps.

From the moss-banks and the rock-  
 shelves where the soft, green ferns  
 unfold,

From the quaking aspen thickets dank  
 with loam of leafy mould.

And my heart grows sick with long-  
 ing, for the call is borne along

On the breath of pines and balsam like  
 a sweet forgotten song,

Bringing messages of healing for the  
 open wounds of sound,

Whisp'ring peace distilled from sun-  
 shine, peace sprung from the natural  
 ground.

Oh, I hear the mountains calling in the  
 far-resounding boom

Of the fall of mighty waters, where the  
 deep primeval gloom

Echoes to their voice of thunder and the very cliffs awake  
 To the conscious joy of living; and the smiling crystal lake  
 At the bottom of the chasm, safelocked in its granite wall,  
 Ripples o'er its silver surface at the far-flung parent call.  
 Oh, I hear the mountains calling from the voiceless solitudes  
 Of the pathless, tree-tracked acres where a holy stillness broods,  
 So profound that e'en the breezes lift the incense of the pine,  
 Silently, before the altars strangely wrought by hand divine  
 In the scarr'd cliffs erected when the mountains were up-hurled,  
 That all nature might revere Him from the making of the world.  
 Oh, I hear the mountains calling from the savage wilderness,  
 Where the awful god of nature bids no human foot transgress;

Where first forces know no mercy  
 and the wild things cry and creep,  
 Where the earth's fierce, Titan off-  
 spring grimly their last vigil keep.  
 And the wail of all the wild things in  
 the canyons deep and lone,  
 Somehow grips about my vitals like a  
 longing for my own;  
 And the voices of the silence ring like  
 trumpets in my ear,  
 And the breath of endless freedom  
 speaks so loud I needs must hear.  
 Every wind that blows from west-  
 ward is full laden with the strain,  
 Till my heart cries out with anguish to  
 be with my own again.  
 Let me rise and travel toward them,  
 let me rise and go today;  
 For I hear the mountains calling and  
 my heart it must obey.

—M. S.





## "NO FARE"

By GEORGE ARMITAGE, '14.

Winner of the Joyce Memorial Prize for 1913



"WHAT'S THESE CHARGES against me on the tenth?" demanded Gage Darrow, tearing into the taxi office. The proprietor, Mr. Martin, slipped down from a wobbly chair. "Let's take a look at them," he said quietly, "maybe it's a mistake."

Gage pulled the statement from his pocket and threw it on the desk. "I should say it is a mistake. You've charged me up with six fares on January 10th and I was sick abed from the eighth to the twelfth of last month."

Mr. Martin scanned the bill for a minute and then turned to a long book filled with blank forms. "Are you sure you had nothing to do with this?"

"Sure? Well, I guess I am sure. I can prove by my personal diary and by a bunch of friends that I was sick."

The proprietor opened the book. "I have here," he explained, "a record of all trips made from this office. After every call a driver reports back to the office and fills out one of these blank forms telling where he got his passengers, where he took them to, and who they were if they had it charged." He rustled through the leaves a moment. "January 8th—January 9th—10th. 'Tisn't on the day shift. Here it is. Read it yourself."

DRIVER .....	Red .....
TAKEN FROM .....	Woman's Hall .....
DELIVERED TO .....	Royal Hotel .....
CHARGED TO .....	Gage Darrow .....
TIME .....	8:30; taken back 11:30; charged to same
NO. OF PASSENGERS .....	Three women both ways

"Three ladies!" cried Gage. "Why, I never sent three ladies out to the dorm in my life. When I'm flush enough to get a taxi for anyone I usually go myself."

"Well, there it is, all down in black and white. That's all I can tell you about it—but wait a moment." Mr. Martin called a number over the phone. "Hello! Garage? Is Red there? Send him over to the office at once."

When the uniformed chauffeur stepped into the room, Martin pointed out the stub. "Do you remember this call?"

Red studied his own writing for a short time. "Sure I do. The women were at the dormitory, out at the university, and went to the Royal. I took them back at 11:30."

"How did you come to charge it to Mr. Darrow, then?"

"Why," explained the driver, plausibly enough, "Some one made the call on the 'phone and said to make the whole charge to Gage Darrow."

"Was it a woman's voice?"

"We had so many calls that I can hardly remember. I think it was, though."

All the time Gage stood in silent astonishment. Then he laughed angrily.

"Me giving a party at the Royal, I suppose. I only wish I had the price." He turned to the driver. "What did they look like? I might be able to figure out who they were."

Red studied a moment. "I don't recollect much, but I think they were all university girls. One was a good deal shorter than the rest and had on heavy furs."

Martin motioned that he was through. "Find out the names of the passengers themselves the next time they charge," he called as the driver left the room. Then he turned to Gage. "Some of those girls over there have pulled off a trick on us. You needn't pay for it, but I'll make it warm for someone, I'll bet."

Gage thanked him and walked out into the street. "Who in the devil could it be," he pondered. A terrific crack on the back brought his thoughts to a sudden check and a happy voice cried, "Cheer up! Didn't you get your last check or has she turned you down again?"

Gage turned angrily. McCloud, his roommate, beamed at him.

"Why, hello, Mac. I've just been down scrapping with old Martin over a taxi bill. Some smart bunch of girls over at the "U" have been riding all around town and charging it to me."

Mac looked amazed. "The devil you say! What did Martin do about it?"

"Oh, he let me off all right, but he's going after those girls. I guess probably it isn't the first time it's happened."

Mac stared thoughtfully at Gage. Then he burst forth. "Say, Gage, I've got a plan. You hike back and pay Martin. Tell him you want to find out yourself who the girls were."

"You go plumb to —. What do you think I am, anyway? Maybe you —."

Mac interrupted. "Now, look'a here, Gage. If Martin goes stirring around, the girls will get into trouble, but if we do the 'shadow' stunt, there'll be a lot of fun in it and no one'll be hurt."

"Say, it would be kinda' fun." Gage was getting into the situation. "But I hate to pay their bills."

"Ah, 'tain't much, and you'll get your money's worth before you're done with it. You go down and pay it. I'll wait at Keller's."

Mac's detective spirit won. Gage hurried back to the taxi office, paid the bill in full, and in fifteen minutes found Mac in Keller's nervously sipping a cream shake."

"Ann," Mac ordered, as Gage came in, "stir up another one of these awful concoctions and charge it to my account." Then he turned to Gage. "Sit down and we'll map out a plan to grab 'em right way. Tell me all you found out from the driver. He must have known something about them."

Gage told the whole story, and when he had finished, Mac pounded on the table, laughing gleefully.

"This is fine, Gage. It's the best thing that's happened around here for a long time. We'll put old Sherlock himself in the shade."

"Does sound pretty good, all right," admitted Gage, "but how're we going to start?"

Mac was prepared. "While I was waiting, I thought of a little plan to start things going. Of course, we could go right to the dean and ask her what three girls went out that night, but there, again, we'd get the girls in wrong. The dean'd want to know all the circumstances and she'd try her best to find who did it. That's her business. And she'd raise Cain if she found out. Girls aren't allowed at the Royal without chaperones, anyway."

Gage nodded his approval and Mac added, "You don't want to cause any trouble anyhow, all you want's the fun."

"Sure, what's your plan?"

"Well, first we've got to get an idea who they might be. I've got a list here of every girl in the dorm. Just made it out yesterday to a little subscription work on the daily. Run it through and see who looks suspicious."

With many suggestions from the head detective, Gage finally cut the whole list to five girls who might be good prospects for investigation.

"Well, we've got them named. What are we going to do with them?"

Mac's eyes sparkled. "That's just where the fun comes in. You're stagging it to the ball this evening, aren't you?"

"You bet."

"So'm I. We'll number these girls from one to five and eliminate them, one by one. They'll all be there tonight. Get a dance with each one and talk taxi all the time and I'll bet we'll see blusters and blushes and blinks if we get the right one."

Gage jumped up. "I'm getting excited as the devil about this. Say, but won't it be rich to see some of them turn red and stutter out some bum excuse? Let's beat it to the frat house and get ready." And out went the self-made detectives.

During the grand march, Gage and Mac from their corner surveyed the long line of fussy frills stepping proudly to the music by the side of their conscious "white fronts."

"I can imagine some of them are laughing at you now," the grinning Mac whispered joyfully.

Gage nodded grimly. "We'll show them."

When the march stopped, Mac pulled Gage out into the chatter.

"Come on," he directed. "They're filling their programs now. Here's where something starts."

Both sided up to No. 1 of the prospects and after the usual "May I's" and "You may's," Mac remarked casually to Gage, "Did you order that taxi for this evening?"

"Yes; but I haven't got the price to pay for it."

Mac laughed carelessly, winking broadly at his confederate. "Oh, that's all right. Charge it to some of your friends. Lots of people do it."

All the time Gage held penetrating eyes of suspicion upon the unsuspecting victim, but without a quiver she remarked calmly, "That's not a bad idea," and turned to another student for the next dance.

The music started and Gage looked at Mac. "She's either a mighty good actor or else she's as innocent as you are. When will we try No. 2?"

"Right after this dance," Mac answered, jiggling away with a co-ed.

Gage was already talking with No. 2 when Mac joined into the conversation. "It's a fright to go to these formal dances," he was saying, "why the taxi fare alone about breaks a man."

Mac made a suggestion. "Gage, you should do like me. Pick out some one who has an account at the taxi office and charge your fares to him. We all look alike to these drivers."

Gage looked up quickly from his program, but No. 2 laughed merrily.

"You always were such a joshier, Mr. McCloud. I know you wouldn't do anything like that."

"Not a flash, not a flush, not a flicker!" Mac grandly orated to Gage when they had gone into a committee of the whole in the corner again.

"Yes, and that's two of our prospects gone, without any appearance of your so-called fun," growled Gage.

But Mac cheered him on. "The best are yet to come. You'll be interested before the evening's over, I know. When do you dance with No. 3?"

"Tenth, I guess."

"Fine! I've got No. 4. We'll kill two birds at once. Remember, taxi on the corners and taxi on the whirls," and Mac pinched through a group of dancers to his partner for the next.

The tenth dance had hardly started when Gage blurted out, "Do you like to ride in taxis?"

"Why, such a funny question!" giggled No. 3. "I think all girls like to, but we seldom get a chance."

"It's much nicer when you have some one else to pay for them, don't you think?" Gage blundered on determinedly.

No. 3 blushed and stuttered with embarrassment.

"I've got her at last," Gage gloated to himself, and then out loud he asked cuttingly, "What was that last remark? I didn't understand you."

No. 3 blushed still redder. "It's just grand of you to ask me. I was wondering who could take me and my mother home tonight. We walked, but it's raining now."

It was so sudden that Gage couldn't say a word for a moment.

"It's really too much to ask you to take mother also," she continued, "but we never thought we'd have to ride home, and so didn't bring the fares."

"Not at all; not at all. Glad to help you," Gage stammered out roughly and finished out the dance in a silent rage.

The very next was with No. 4, and as he stumbled off on the two-step, Mac whispered knowingly, "She's warm, pump her!"

Gage glided away with little heart for Mac's game, but ready to do his duty.

"Do you ride in a taxi often?" he fired at No. 4 immediately.

"Not very often, thank you," she piped forth. "You see, when one is living at the dorm the fellows don't need a cab to take us. Why, I've only ridden in one this year and that was when my mother died."

Gage was all sympathy at once. "That's right; I'm sorry I brought up such a sad topic. A—a—are you expecting any more deaths soon?"

The music died with her smile and she bowed coldly as Gage thanked her for the dance. "The rude thing!" he heard her say as he raved across the hall for Mac.

"This is a fine fix you've got me into with all your detective work!"

Mac's eyes danced. "What's the trouble, now?"

"Oh, nothing at all, except I'm taking No. 3 home in a taxi with her mother and I've asked No. 4 if she's expecting any more deaths. Oh, Lord, what a mess!"

"Are you expecting any more deaths?" Mac roared. "I should think she would be sore. And taking No. 3 and her mother home in a taxi. So nice to have the mother along. It's only one more fare, and you've got lots of money."

"Yes, stand there and laugh," groaned Gage. "I'm through with your whole scheme. These girls have made a goat out of me all evening."

Mac viewed him with disgust. "Why, you old crab! Here we're having a swell time, probably scaring some girls half to death and you want to quit. There's No. 5 now. See, over there, talking with the dean. I'll bet she knows something about those taxi fares."

"I'll call you on that," cried the angry Gage. "I'll bet you a dollar she doesn't know a thing about them. This idea of yours is all a farce."

Mac's face beamed in amazement. "You're on for a dollar. We'll let her hold the stakes herself."

Both men hurried up to No. 5. "We've just made a bet," Mac explained, "and we want you to hold the stakes until it's settled." Each pushed a dollar into her hand and hurried away.

"You've got to find out," pleaded Gage. "I'm sick of the whole business."

Mac shook his head. "Nothing doing. You made the bet and you've got to prove your statement. Besides the next dance is the 'Home, Sweet Home' and that's where I'm going."

"But how'll I find out?"

"Why, the best way'd be to ask her point blank if she knows anything about a taxi ride on January 10th.

Gage wearily resigned himself to the task. "All right; I'll make this one more try," he answered and started toward No. 5.

"It'll be a good one," Mac threw back, making for the cloak room. At the door he yelled, "Have a nice ride, Gage."

An hour later Mac, sound asleep and dreaming of taxis full of beautiful girls, was jerked into an upright position by a rough hand. Gage stood at the bedside, his face white and his eyes gleaming.

"You are a fine roommate, you are," he grated out.

"What's the matter now?" Mac drawled sleepily.

Gage swelled in rage. "Matter! you ask? No. 5 told me to ask you. Said that you'd know all about it. I never thought a pal'd treat me as dirty as that. "What do you know about the affair anyway? Speak up. Don't sit there like a grinning ape."

Mac yawned and blinked at the light. "I don't know much except that you owed me a three-dollar election bet you refused to pay, and we're even now. I gave the party for No. 5." He dropped wearily to his pillow and the dazed Gage sunk into a chair.

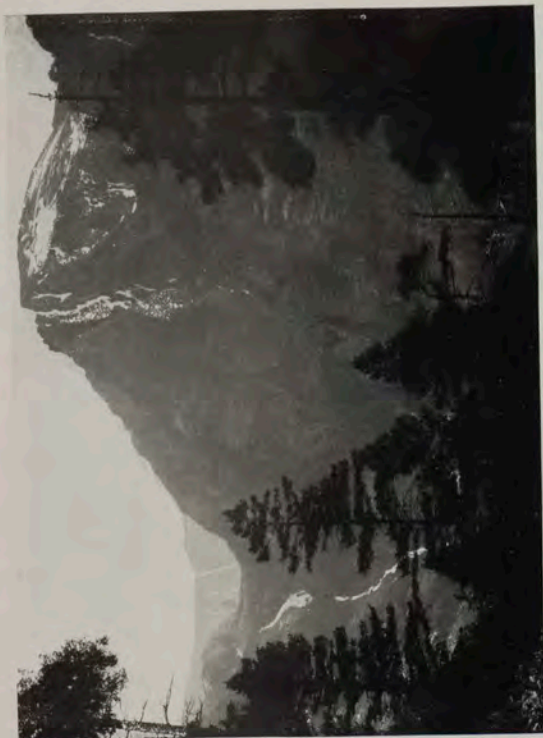
"You're pretty smart, all right," he groaned. "You won the two dollars, too. I'm stung for sure." Then a thought struck him. "All I want to know, Mac, who was the short lady in heavy furs?"

Mac sighed dreamily.

"Oh, that was only the dean. She chaperoned for us."



THE SENTINEL  
1914.



11



## THE DAY OF FULFILLMENT

By  
GERTRUDE  
A. ZERR



**T**

HE SUN had struggled bleakly across the narrow defile between the mountains, and had disappeared again; on the southern slope the white hills glistened long after the northern exposure had been locked again in the long winter day.

Antone, the only breathing thing in a world of snow, still stood on the darkening slope, resting his bundle of fagots against the trunk of the lone tree. His bent figure crouched against the trunk; one long hand lifted the shaggy white hair out of his tired eyes, as he gazed across the valley.

"So — " he murmured, "the light lays to the Ruby mine today. Yesterday did it fall only to the Lady Love. Unt tomorrow unt tomorrow will it be yet a little longer — see?"

He laid a trembling hand on a bough of the tree, and raised his eyes to its sturdy height.

"Tomorrow unt tomorrow will it fall on the others till it shall come to us — then will the little tree be again in the light — no, my poy?"

He drew his hands lovingly over the sharp needles. The wind, sweeping down the bare hill-side, caught the branches, and tossed them lightly against his bent form. He laughed delightedly.

"So, you would knock your oldt fader down?" he chided. "Such a liddle poy you was once, unt now to look! You can knock him down — unt how you talk to him — my, my!"

The tree swayed and moaned in a soft cadence that answered caressingly the old man's childish prattle. The long shadows deepened, merging into the dusky patches on the snow, where half buried cabins sent up their thin spirals of smoke. Antone watched dreamingly, protected from the wind by a curiously artificial wall of rock, blasted out of the solid mountain side to the height of a seedling. The gusts of snow that whirled down from the hill passed on over his head. He saw them fall in soft clouds at his feet, and laughed again.

"So didt they blow ofer you when you was liddle, my poy," he murmured, "when I didt make the wall to keep the snow-slides off. Now you don't care. They fall in your pranches, but hurt you not."

The tree whispered sibilantly, its low branches brushing the coarse white hair and ragged sleeve of the old miner.

Into the peaceful silence the shrill voice of a woman throbbled like a wound.

"Antone! Antone!" she shrieked.

Antone started guiltily.

"Yes, yes!" he cried in the eager haste of long subjection.

The peaceful smile was wiped out with the suddenness of a gust of wind. He picked up his fagots, and lifting his sodden snowshoes with painful effort moved slowly down the hill.

At the top of the ravine that sheltered his cabin, he stopped and looked back at the tree. It stood alone amid the mass of boulders piled about its base. Its dark branches were outlined against the snow, "like a baby," Antone said, "when he holdts out his handis unt tries to walk to you." No other trees grew on the slope, but the little snow-buried shrubs dotted the hill-side with mounds like babies' graves.

The door of the cabin opened with a jerk.

"Antone, I shall freeze! Why not you come in? Bah! He knows nothing! He will stand in the snow like one crazy. Come in!"

She stamped her foot angrily. The wind caught her straying hair and whipped it across her lined and haggard cheeks. Clutching the remnant of a ragged blanket, about her spare figure, she stood erect and tall before the door of the cabin.

Antone hurried down into the ravine. He left his snowshoes standing upright in the snow, and carried his brushwood into the cabin.

"It is coldt, my Katrine," he apologized. "I will make it warm for you — wait — see, the fire will burn."

"Shut up," she snapped, "you know nothing, Antone. Do not talk to me. It will not burn. It is not enough. More wood must we haf."

"All day haf I looked for woodt, Katrine," he sighed patiently. "but when there is none, what then? Even didt I break a branch from the tree. See, I haf brought it."

"Bah, a branch! What is a branch? A tree is not enough. But it will keep us warm till the snow is gone a little. It is no good where it grows, Antone, and I freeze. We will cut it down. We will bring it in tonight."

"The tree?" repeated Antone, stupidly.

"Yes, fool; the tree," snarled his wife. "The tree shall not stand while I freeze."

"Burn the tree?" reiterated Antone. "But Katrine, it is my liddle poy to me; I made his liddle grave there unt his spirit goes into the tree. He talks to me by day, unt cries for me by night, like when he was not deadt. I cannot burn the tree. It is my liddle poy to me."

"Antone, be still!" screamed Katrine. "It is not the poy. He is dead and we have him not. He cannot come back to us in the tree. It is of a foolishness. Get out!"

She pushed him through the door, and slammed it after him.

Antone moved mechanically toward the top of the ravine, his eyes on the tree.

"But if it is for Katrine — " he repeated, "if it is for Katrine — "

The low sweep of wind laughed at him through the branches of the tree. He shook his head sadly, and reopened the door of the cabin. Katrine crouched over the tiny fire struggling in the heap of broken stones that formed the fireplace, her thin arms wound about her knees, her whole figure shaking with cold. Antone approached timidly, his eyes full of helpless grief. He picked up the pine bough, and would have laid it on the coals, but she snatched it from him angrily.

"Let it alone," she snapped. "It cannot make a fire; it is not enough. Get out. We cannot freeze. I will cut down the tree myself."

"Katrine," he implored, "you will not cut it down! You haf promised I shall lie there with my poy when I am deadt. You haf promised, Katrine."

"Antone," she cried savagely, "thirty years have I lived here in this place. I have waited and looked for the gold, and you haf found it not. For the diamonds and the silk dresses and the plumes have I waited, thirty years, Antone — but for wood I will not wait. I will not freeze."

"Might we could go to camp," ventured Antone. "Unt time is it for the letter from Bohemia."

"Do I not know? Haf I not sent to them the ore from the mine? And did I not wash to get the money to pay the assayer, because you had none. The letter will come. And it will tell me true. In America do they lie to

me always, but in Bohemia will they be honest. They will tell me my gold is good. Get my skis. We will go."

"Might it would be better to use the webs," suggested Antone, timidly. "The snow is soft."

But she slammed the door on him.

So they used the skis. In the early afternoon twilight they skimmed over the snow like misshapen wraiths, the gaunt woman and the gnarled, twisted old man. She disdained the support of his pole and slid along before him in silence.

Early as it was, there were lights in the camp, twinkling feebly from the patched and broken windows of long-used cabins. Solitary travelers on skis called a greeting to Antone as they passed. They were old men, too, but most of them walked upright, and their eyes gleamed clearly from their white brows. A lilt of cheering noises floated over the frosty air to Antone and Katrine, and a sudden flash of lantern light announced the arrival of the mail-carrier. He was swinging up to the post-office door, closely followed by his dog team. His cheerful, loud voice called a vociferous greeting, and then, to make his presence more widely known, he took out his six-shooter, and fired twice. The cabins on the hill-sides opened at once, and one after another lithe figures on snow-shoes flew down the slope, bringing up at the post-office door with dextrous circular flourishes.

"Look out, there, you dirty white men," shouted the young stage-driver, genially, "or I'll sic the dogs on you." He stopped to pat one of the dogs, and grinned at its affectionate response. "You see? They're man-biting animals, every one of them."

"The mail is in," said Antone, timidly.

"Fool, can I not see?" retorted Katrine. "Quick, let us get the wood and go home. Find the toboggan. I will see if the letter has come."

She added her skis to the collection before the door, and entered the store, followed by the abject Antone. The half dozen women, clinging to the stove, greeted Katrine effusively. She nodded and smiled with an unaccustomed graciousness, but did not stop. The store-keeper came forward leisurely, peering at Antone over his glasses.

"Gif Antone your toboggan. Wood must we haf now," dictated Katrine, brushing past him.

"All right, Mrs. Hloka. You got a letter. Liz'bet', give Mrs. Hloka her letter. I'll help Antone get the wood."

Antone glanced wistfully at his implacable wife, but said nothing as he followed the store-keeper. Katrine went on to the post-office window.

"Good afternoon, 'Liz'bet'. Did I get a letter?"

"Letter?" repeated Elizabeth. "Yes, from Bohemia. From an assayer. He don't say much, but it don't take much paper to say whether gold is good or not."

Katrine opened the thin sheet, and then passionately tore it to shreds.

"What do they know, those assayers?" she cried. "They say I haf no gold in my mine. Always they lie to me. Everybody lies. They want I should abandon my claim. Then will they jump it and be rich instead of me."

"Rich," echoed Elizabeth. "I don't think so, Katrine. They'd tell you if your gold was good. And everybody says it ain't."

"It is," insisted Katrine. "Gold there is, if they would tell us true. Why should everybody find gold and not Antone? And the ore is good — but everybody lies to me. Nobody on earth will tell me true."

"Then ask somebody off the earth," giggled the school-teacher.

"Off the earth?" repeated Katrine.

"Yes, spirits, you know. We ask 'em lots of things."

"Spirits?" repeated Katrine, awed. "You talk to spirits? You can?"

"Come on," interposed Elizabeth, eagerly, "let's do. We haven't had a sitting since the Christmas. Let's go over to your house, Annie. There are more chairs there."

"What is a sitting?" asked Katrine, hesitating.

"Oh, you talk to spirits," giggled the teacher, "people you know — that are dead — their spirits — and they tell you things you want to know. A man showed us how to do it last summer. Come on. You can ask 'em anything."

Katrine's eyes dilated. "And they know?" she breathed. "They could tell me where my gold is?"

The teacher giggled.

Antone held out his hand as if to speak.

"Antone, be still. The letter from Bohemia has come. It says the mine has no gold."

Antone's patient head drooped yet lower.

"I will dig another shaft, Katrine. Goldt will there be some place, maybe."

Katrine stamped her foot.

"Gold there is in it," she cried, passionately. "I will ask the spirits where it is. But I am afraid. If it should be my father who comes to talk to me, I would cry. He would look at me from his other world and talk to me like when he was not dead, and the tears would come to my eye. Yet I want to ask him where is the gold."

"Yes, yes," soothed Antone, "maybe you will not cry. When he was

not dead; he fought upon you, until the tears come not for those we do not love."

"Be still, Antone!" She turned upon him fiercely. "What do you know? It is true that I have hated him, but is he not dead? Death changes all. I love him now because he is gone from me. And I will talk to him, even if I cry. Come!"

The teacher, still chattering aimlessly, ran on ahead, and led the party over the compactly frozen trail to Annie's cabin.

Antone followed apologetically, and took up his unobtrusive position in a corner.

"Now, course you don't really see him," explained the teacher, "you put your hands on the table, you know —"

"Let me tell her, Phyllis," interrupted Annie, "you pull down the curtains, and open the stove door. It's awfully hot."

She glared dramatically at the company, as they slid into chairs around the table, fixing her eye on one after the other with what she fondly believed to be a close imitation of the hypnotic gaze of the spiritualist of the summer before.

"When people meet together to commune with the heavens," she began impressively, "an aura covers them up, and the rarefied air around them opens up to the influence of the heavenly spirits. The people we loved on earth are always with us. They flutter around trying to talk to us. We hear them when we are alone in the hills, but we can't see them or understand what they say. We think it is the brook running over the rocks, or the wind in the trees —"

Antone stirred suddenly.

"Be still, Antone!" hissed Katrine, her nerves tinsling.

"But they can understand us when we talk, and if we ask them questions, they try to answer us. Now, when we're all together, we can find ways to understand them. Course you won't see the spirit, Katrine, but it's here, and it can answer your questions. If it raps once, that means 'no'; if it raps twice, that means 'yes.' Now, ask a question."

The six women leaned forward and placed their fingers together. Katrine's streaked and faded eyes gleamed with excitement.

"I want to know," she whispered hoarsely, "will we find the gold? Now? This spring?"

The teacher stopped giggling, and leaned over Annie's chair. The women fixed their eyes on their hands and waited. The half green wood in the fire snapped and sputtered, and the yellow flames chased queer elfin figures round and round the cabin, lighting up one after another of the comfortable chairs, the spring bed, and the cheerfulness of hunting trophies, guns, and min-

ers' tools. Tense faces flashed into the light and out again. Antone watched, fascinated.

The hands on the table quivered in the flitting light. Then there was a sharp rap. Katrine gasped. Then another.

"Where? Where is the gold? How shall we dig? Is it straight ahead in the tunnel, or does it lie in a cross lead? Ask the spirit. Where shall we dig?"

"Is the lead straight on in the tunnel?" asked Annie.

They put their hands together again. Antone waited, his anxious eyes on his wife. She sat opposite the open stove door, her face haggard in its excitement. Her eyes blazed and flamed like those of a crouching cat. Her wild white hair, escaped from the confining hair-pins, streaked her face in glistening white scars.

The table rapped sharply, and was silent.

"Where, then?" she gasped, "a cross lead?"

The raps came quickly, two in succession.

Antone started to his feet, and took a quick step forward.

"Ask, ask, that we may know," pleaded Katrine. "Where is the lead, and the gold that will make us rich?"

The women looked uncertainly at her wild eyes, and at each other.

"Why, you can't ask like that," explained Annie, "the spirits say yes and no. It's all we can understand."

Katrine pushed back her chair with a crash.

"I must know!" she cried. "Make him to come. Make me to see him and ask him myself. There! There! He has come! He looks at me from his other world! Father! Speak to me! Tell me where lies the lead? Where is the gold?"

Her eyes glared at the crooked figure of Antone, wavering in the dim light. He trembled at her frenzied approach, and put forward a feeble hand of resistance.

"No, no, Katrine — " he began.

"You must tell me!" shrieked Katrine. "The gold, father, it is in the cross-lead — you have said it — tell me now, where is the cross-lead."

Antone, terrified, shrank back into the shadow.

Annie took Katrine's hand reassuringly.

"He ain't here, Katherine," she soothed, "nobody ain't here but us."

Katrine turned slowly.

"But he was," she moaned, "and you have let him go again. The gold is there — he has said it — but we shall die before we haf found it. How can he tell us now when he is gone?"

"Oh, lots of ways," Annie assured her, contritely. "Maybe you'll find a mark on the place, or hear it in the trees, or dream it. You'll find out some-way."

"And I shall be rich —" she repeated dreamily. "Come Antone, let us go home. He will tell us in a dream, and I shall be rich. I shall be in society, and all over the world I shall go. I shall bow to the queen in Vienna, and laugh at the great ladies who laughed at me when I plowed the fields in Bohemia. They will not be rich, like me. They will not have so many diamonds and plumes."

Antone shook his head sadly.

"The queen is very high, unt the ladies are very great, Katrine," he murmured.

She strode past him through the door. The short lengths of wood from the company store were already piled on the sled, and Antone took the ropes.

"I guess you can't manage it with skis," suggested the storekeeper. "Maybe you better have webs. I got some I ain't usin'. You can bring 'em back some other time."

Antone looked at Katrine, but as she made no comment, he exchanged the long skis for the webs, and left them standing in the snow.

It was very dark. Antone plodded slowly on, dragging the heavy sled, while his wife strode before him, the swish of her skis trailing almost imperceptibly over his consciousness. When they came to the top of the ravine, he spoke timidly.

"Unt will you not come back, Katrine? Not to me — unt the tree?"

"Bah, what are you? You know nothing. But me — I shall be a great lady. I shall not come back. You can stay by your tree."

"With my poy," sighed Antone, patiently. "But you will be happy, Katrine. That is goot."

He unloaded and piled the wood before the door of the cabin. But he stopped a moment beside the door, to pass his hands caressingly over her skis, as he had caressed the tree.

Every day, then, the light on the opposite hill grew longer. The sun level sank slowly, bringing the tops of the shrubs above the surface, and the snow-slides came. Antone was happy. Katrine watched with him for the first signs of spring, her impatience tempered, for the first time, with certainty. Sometimes she spoke to him almost gently, and even when she was silent there was a breath of cheer in her hopefulness. Every day she went down into the valley to borrow late fashion books, and to plan her new clothes with the other women. She put in hours arranging her wild hair like that of the ladies in the magazines. She sent to railroad and steamship companies for guide-



books, and sometimes let Antone help her map out her extensive journeys. Then Antone would become fearful lest her happiness be snatched from her.

"Unt if we find not the goldt, my Katrine, what then?" he asked, in one of her moments of condescension.

"We will find it," she insisted. "Has not the spirit said it?"

"But where?" asked Antone. "I haf listened in the tree unt he says not'ing; unt the brooks run high, yet they tell me not."

"Be still, Antone," she cried, exasperated. "To me the dream will come. What do you know? The spirits will not talk to you."

"But my poy does," murmured Antone, dreamily.

He wandered out of doors, picking his way carefully up the hill to where the tree stood, secure and sturdy. Already fresh needles of lighter green tipped its dark branches, and Antone pressed the soft new twigs in his hands lovingly. Then he passed on to his mine. A week before, the roof had hung low with icicles, and glazed pools covered the track. Now the ice for a hundred yards had thawed and tiny streams of water trickled from a thousand minute crevices. Antone lighted a candle. The light flickered over the frost work of the tunnel, glinting against the rough-hewn rocks. The tunnel was very low, but it was very long. Antone had sacrificed himself to make it so. If he had used his time and his dynamite to blast it six feet high, he could not have made it six hundred feet long in thirty years. He did not need now to crawl on his hands and knees to penetrate its depths. Ape and long usace had bent him to conform to the tunnel, since he would not make the tunnel conform to himself. He turned off into several cross-cuts, stopping to break off the icicles, and to brush away the deep frost, with a loving touch.

"There is no goldt," he sighed, "unt Katrine will cry. But I can work tomorrow."

He returned to the entrance of the tunnel, and closed the door. Katrine was there.

"Where haf you been?" she demanded.

"I look at the tree," he murmured, "unt it is green. Unt I say, 'When the needles are green with spring, time it is to work in the mine,' unt I go to look."

"The tree," she grumbled, "always the tree. No work would you do on the mine till you had planted it. No dynamite could you use for the tunnel till you had blasted the rock to keep the snowslides off. Bah, you lof nothing else."

"No, no, Katrine, I lof the tree because he is my liddle poy to me, but I lof my poy because he is of you."

"Fool," she snorted, and strode away, angry.

But falling asleep that night, she had the tree before her mind, and the dream came.

She woke with a start, and ran to the window.

"Antone, Antone!" she called. "Look at the tree! The spirit has spoken! The gold is there!"

Antone gave a short, wounded cry.

A shaft of white light glowed in the northern sky in great fan-like folds, and in its brightness the lone tree stood, its shadowy branches pointing downward, promisingly.

"No," cried Antone. "It is not the cross-lead, Katrine. It is the grave of my poy unt me. Have you not promised I shall lie there? If I dig, the roots will be broken; the tree will die. Unt it will not laugh in the wind any more."

"Antone what is a tree? And what is a grave? You can find other trees, and other graves. But I, Antone, where else will I find the gold? Where else will come the diamonds and the plumes? Thirty years have I waited, Antone — here! Look at it! Here!"

She flung out her hands tragically over the wretchedness of the kennel in which they lived. A heap of broken stones for a fireplace, a disordered bunk of pine boughs, the decaying stumps of old trees in the earth floor, for tables and stools. Antone covered his eyes with his trembling hands. Katrine threw herself on the bunk, and wept stormily.

Morning found the old man still sitting on the floor by the window. At Katrine's first move, he rose unsteadily, and tottered from the room.

Ten minutes later a loud report shattered against the opposite slope, and for five seconds rolled back and forth, echoing and re-echoing through the hills. There was another report, and another. Katrine lifted her head exultantly, and hurried from the cabin. At the door of the tunnel she met Antone coming out with a load of rock.

"I dig in the cut, Katrine," he said.

She followed him into the tunnel, creeping with difficulty under the jagged overhanging rocks of the low roof. All day she clung to him, watching feverishly, the deepening of the cut, and urging him to greater haste. All day Antone pushed the heavy cart over the waterlogged wooden tracks with feeble but persistent effort.

By the seventh day Antone had dug five feet, crawling in and out of the cut, and removing the ore by basketfuls. On that day a fiber of the tree brushed his face. He called Kathrine.

"It is the tree!" she cried, joyously. "Now will we find the gold. Quick, Antone."

She snatched the drill from his hands and held it in place. Antone struck it feebly, but certainly, till the holes were made. Then he placed his charges of dynamite, and withdrew to the mouth of the tunnel. He waited, his anxious eyes unconsciously seeking the tree.

"It will not hurt —" began Katrine, her eyes following his, half-sympathetically.

They waited breathlessly. Then the long, hollow report came, and Antone quivered as the little tree swayed and shook with the force of the explosion. The other three reports came in quick succession, and Antone drew a deep breath.

"It did not fall," he murmured; then he sighed. "It was not enough."

Katrine had hurried back into the tunnel, and was on her knees examining the ore.

"It was not enough," she said, when he knelt down beside her. "Look, Antone, the rock under the tree—the gold is there, maybe."

"It is too high for goldt, Katrine," he said, but he attacked it with his pick.

"Put in dynamite, Antone," pleaded Katrine. "The gold will be there. We will be rich, Antone — rich!"

She held her candle high for him, clutching it with a grasp that left finger prints in the tallow. The hot grease dropped unheeded on her face as she leaned forward, her eyes fixed on the slowly moving rock.

"Now will we see — now will we see —" she murmured, over and over.

Antone tugged and strained, but the rock gave slowly. He caught his pick in a crevice, and stopped to brush away the gravel that fell.

"Antone, go on!" cried Katrine, sharply.

He attacked the rock again, and brought a projection into view, to which he was able to attach his pick. The rock fell between him and his wife.

"Run, Katrine," he shrieked. "The earth comes, too! Run! Run!"

He struggled feebly forward and fell. Katrine, in frantic terror, dropped her candle, and fled from the tunnel, the dull echo of the falling rocks pursuing her. But when she reached the entrance, she remembered Antone. She turned back. The cut was filled up with boulders and earth.

"Antone! Antone!" she wailed. "He is dead! My Antone, he is dead!"

Dry-eyed, she returned to the entrance.

"We came to see how you was gettin' along," a chirping voice greeted her. "Where's Antone?"

Katrine's eyes wavered, and rested on the tree. All the earth about it had fallen, and half the roots lay exposed. But it still clung tenaciously

to the rocks, supported against the lower slope by its supple branches. Her eyes softened.

"Antone is dead," she said quietly. He is there — under the tree."

"Under the tree?" echoed Phyllis, awed.

"Where he wanted — he is buried there. So shall he stay — with the boy."

"But your gold, Katrine, didn't the spirits say — "

She stamped her foot, angrily.

"What do you know?" she demanded. "Did he not wish to lie there? Go away. For the gold I care not. I will gif it up to him. Bah, how could you know that I will? You haf not known lof. Not like I love my Antone."

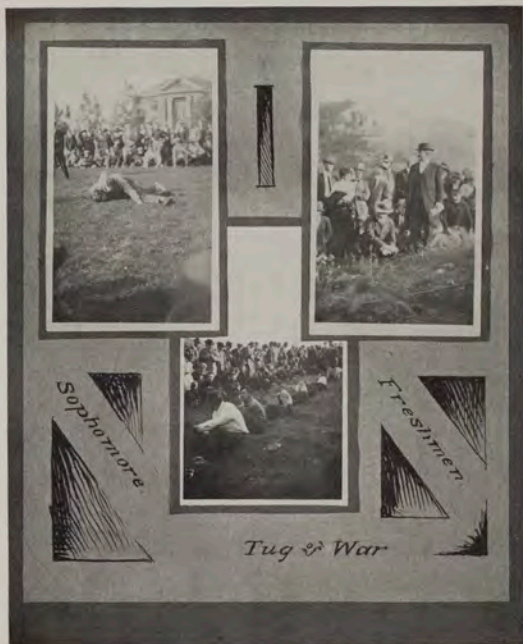
The women looked at each other questioningly.

Katrine shook back her hair with a fierce gesture.

"What if I did say we lived without lof?" she reiterated. "Is he not dead? I shall not go to Bohemia. I shall not bow to the queen. The gold shall stay with Antone. But so shall I. Do I not lof him?"

She watched them as they drifted away, and smiled.

"And lof is greater than gold," she repeated, softly. "It's greater than gold, Antone."





N. LITTLE

# ATHLETICS

# MEN

1912-13

## FOOTBALL—

CRAIGHEAD  
HUNT  
SMEAD  
WEDMAN  
DAEMS  
McCARTHY  
DESCHAMPS  
OWSLEY  
DORNBLASER  
(Captain)  
KELLY  
DAY  
RONAN  
GAULT  
KLEBE  
STREIT

## BASKETBALL—

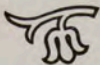
WOLFE  
SHEEDY  
TABOR  
CUMMINS  
WHISLER  
(Captain)  
DENBERT  
STREIT

## TRACK—

DORNBLASER  
RONAN  
OWSLEY  
(Captain)  
SHEEDY  
ARMTAGE

# FOOTBALL

SMEAD	Full
OWSLEY	Left Half
DESCHAMPS-RONAN	Right Half
GAULT	Left End
HUNT-WEIDMAN	Right End
DORNBLASER (Capt.)	Left Tackle
KLEBE	Right Tackle
CRAIGHEAD	Left Guard
DAEMS-DAY	Right Guard
STREIT	Center
MCCARTHY-KELLEY	Quarter







DORNBLASER

SMEAD

WEIDMAN

"Dorn," as he was called by the squad, and "Dornie," by the ladies, was captain of the 1912 football team. At tackle he was a pillar of strength in every game. As a leader he inspired loyalty and confidence. His playing—oh, well, we endorse the Salt Lake critic who said: "I have seen them all and without a doubt he is the best tackle in the west." Dorn has another year of football.

"Buck" celebrated his return to school by playing fullback on the team. Concrete walls cannot be compared to "Sun-kiss'1" when it comes to stopping an opposing team. His defensive work was of the sort that calls for the crowd's applause even in out-of-town games. "Buck" is captain of next year's team. We have great hopes.

"Spud" had his fighting spirit up and going the entire season. He was a hard worker and for his first year on the team, played an exceptionally good game at end. When not on the field, "Spud" was amusing the team with his famous Scotch songs. We hope to see more of "Spud's" football ability, although we feel that we could get along without the songs.



McCARTHY

DAY

CRAIGHEAD

"Pat," he make fun for Lizette by passing her the ball. Upon Kelly's injury Pat became a permanent fixture at quarterback. His cool head in tight pinches saved the team many times. He has two more years of football coming.

"Cliff finished his third year on the team this fall, playing a good game at guard. On trips "Cliff's" wit and liveliness were the delight of the whole team. (He slept most all the time.) However, sometimes it's a good thing to save your energy for the game. That's what C. O. D. did.

"Possum" was one of the best centers Montana ever had. He handled the ball well and played a good, defensive game. Dining car service suited "Possum" pretty well, although he thought that meals came too far apart. His most brilliant playing was at Salt Lake.



DAEMS

OWSLEY

DESCHAMPS

The "Belgian" is an awful mean freshman to spank. At guard he fought just as much, as any of the opposing teams will tell you. He is another one of our freshmen to whom we are going to point with pride in the years to come.

"Punk" has played his second year on the team. On offense it usually took three good men to stop him. He was faster than any man seen at Montana in many moons. As for his playing, judge for yourself. The Portland papers heralded him as a former All-American half.

"Lizette," she hurt her ankle about the middle of the season, but kept on playing just the same. Deschamps excelled as a line plunger, although no one had it on him in his defensive work. He was under everything that came his way.



HUNT

KELLY

KLEBE

"Pink" put all his energy into his playing this year and his work on the team showed it. He could be put at most any position and hold his own. "Pink" was "Spud's" partner in the songs and amusements. Some combination, what? But to really appreciate them, you should have heard them. "Pink" has two more years of football in which to make a reputation.

"Kel," although not able to finish out the season with us, played a fine game at quarter. His judgment in directing plays through the opposing team was especially good. Pat's failing, when he was out of town, is "ragging." Just ask somebody how he acted at Logan. We hope to see "Kel's" smiling countenance and expressive eyebrows on the field again next year.

"Hell Diver" is his correct name, first used at Logan. Although "German" can swim a little, that is not what the name refers to. "Hell Diver" was a good man to put on the opposite side of the line to balance "Dorn." The bigger the opponents, the better Klebe liked it. Next year will be his last of football.



STREIT

GAULT

RONAN

"Tommy Peeker" picked up his name in Seattle. He and a sailor had a contest to see which knew the most people. "Peeker" won. Right off the bat he named one that the sailor didn't know. However, all this did not interfere with his work at center. For a first year man he was nothing short of brilliant. Before he finishes he should be one of the best centers Montana ever had.

"Jimmy," as an end, played an exceptionally strong game. Forward passes were his specialty. "Jimmy" is only a freshman, so we expect to see something great from him. He liked Salt Lake better than any other place we stopped at this season.

"Pete" or "Dago"; he answers by either name, preferably "Dago." At half, "Dago" worked like a Trojan. Without a doubt his favorite pastime is football, although he is occasionally represented at basket socials. "Pete" has a good eye for picking openings on the football field. Also for autos.



PHILOON

WHISLER

"Coach" Philoon was the one man, if one man could be picked, who was responsible for the showing made by this year's team. When asked whether he would consider the coaching of the team, at the first of the year, he accepted willingly and enthusiastically. The same willingness and enthusiasm were characteristic of him throughout the entire season. The "Coach" was prevented from going on any of the trips except the one into Salt Lake, where his presence gave the men the "pep" and confidence which made the game one of the best ever witnessed at Salt Lake. Both faculty and students of the University of Montana are deeply indebted to Lieutenant Philoon.

"Shorty" was the best little manager you ever saw. To show you that he had the interests of the A. S. U. M. at heart, we will merely mention in passing that his thrift and economy led the team to bestow upon him the name of Izzy Whistlestein in appreciation of the many meals it didn't get. Ask Shorty to tell you about Cache Junction. We won't say anything about except that it was a good thing he had the money with him. Shorty enjoyed Salt Lake very much.

## Foot Ball Review



THE football season of 1912 was probably the most successful one the University has ever had. Montana played several teams that she had never played before and attained a new prestige in football. In past years Montana has tried with small success to meet other state universities, and has had hard work in being recognized by them. However, this year our reputation was established by the game with the University of Utah, if nothing else. Added to this was the showing made on the coast trip, with the result that Montana is now a known and recognized factor in the western athletic world.

During the season we played six games. The first, with the Montana Aggies, we won by a small score. In the invasion of Utah, which followed, although Montana lost both games, it was a happy and triumphant team that returned home. At Logan poor officials virtually won the game for the Utah Aggies. At Salt Lake we succeeded in holding the University of Utah, the Rocky Mountain champions, to a very close score, and but for an unfortunate fluke the game would have been a tie. We then played a return game with the Montana Aggies at Bozeman, winning by a very one-sided score. Gonzaga was our next opponent, and by a happy coincidence we defeated them with the same score with which they won over us in 1910. On Thanksgiving day we played Willamette University at Salem, Oregon. This game was the hardest of the season for Montana, and with the team crippled by injuries and sickness we lost by a big score.

Had an All-Montana team been chosen this year, it would undoubtedly have been composed mainly of University of Montana men.

### Foot Ball Schedule

- October 19—Montana Aggies, 0; Montana, 7.  
October 26—Utah Aggies, 17; Montana, 0.  
November 2—University of Utah, 10; Montana, 3.  
November 9—Montana Aggies, 3; Montana, 39.  
November 23—Gonzaga College, 7; Montana, 16.  
November 28—Willamette University, 30; Montana, 9.



# BASKETBALL

LINEUP:

WHISLER	Left Forward
CUMMINS	Right Forward
TABOR	Center
SHEEDY	Left Guard
WOLFE	Right Guard
STREIT	Sub Guard
DEHNERT	Sub Forward





WHISLER

TABOR

CAPTAIN WHISLER.—This was "Shorty's" second year on the team, and he showed himself to be one of the fastest men ever seen on a Montana floor. He sure had poor "Bing's" goat, both in Bozeman and Helena. But that's neither here nor there. What we say is that "Shorty" ought to keep training better or he'll get fat.

TABOR.—"Hank" celebrated his first year in the University by making center on the team. At the pivot position he worked hard during the entire season and to him can be attributed much of the team's success. For hard, earnest work no other man on the team was Tabor's equal. He could always be depended upon to do what he was told.



SHEEDY

WOLFE

CUMMINS

SHEEDY.—"Pat" was a sticker the entire season in practice as well as in games. Woe to the forward who played against him; there was never a minute during the game that Pat was not playing right on top of him. For the question how Montana held her opponents to such low scores, one answer is Sheedy. Pat has one more year of basketball.

WOLFE.—This is his second year on the team. His playing was far superior to his work last season. In every game he showed his mettle by keeping the opposing forwards well in hand. At throwing baskets he proved to be an exceptional guard as many of the team's points were obtained by him.

CUMMINS.—"Red," another first-year man, firmly established himself at forward. The feature of this freshman's work was his aggressiveness during a game. There was not a guard on any team we met this season that could keep this rusty-headed boy under control. His motto is: "You can't be a fusser and an athlete at the same time. T'ell with fussing."

## Substitutes

STREIT.—Another freshman who succeeded in making his letter just at the close of the season. Had Streit got out the first of the season he would have undoubtedly been a regular on the team. Watch for him in the future.

DEHNERT.—A wizard at floor work. His guards simply could not find him. More will be said about Sam in the next three years.

The first team would have been a sad affair this year had it not been for the work of our second team. McPhail, Streit, Lansing, Craighead, Griffith and Dehnert made up a second team which often took the first team into camp. These men deserve as much honor for the season's work as do the members of the first team.

## Basket Ball

Season 1913



ASKETBALL this year was far above that of any other year that Montana has ever had. More interest was taken in it by the students which meant that more men reported for practice. There were about eighteen men out for practice every night during the entire season. The University succeeded in defeating all teams it met with the exception of the University of Utah and the Montana Aggies.

Three games were played with the Aggies to decide the state championship. Montana won on the home floor, but lost in Bozeman. Therefore, it was decided to play the third game on a neutral floor. Helena was selected as the place to play. Montana lost only after a stubbornly contested game, and had the satisfaction of knowing that though they lost hard they took their defeat well.

### Basket Ball Schedule

---

January 17—Stevensville, 8; Montana, 29.

January 30—Montana Aggies, 16; Montana, 19.

February 14—University of Utah, 38; Montana, 17.

March 1—Carroll Club, 10; Montana, 43.

March 8—Montana Aggies, 23; Montana, 16.

March 14—Montana Aggies, 25; Montana, 18.

THE SENTINEL

1914



# TRACK

OWSLEY

SHEEDY

DORNBLASER

TAYLOR

RONAN

KUPHAL

VEALEY

ARMITAGE



PUNK OWSLEY, 1915.

Captain of this year's team is expected to show good form in this year's test. This is his second year, and despite the fact that his records were not fast last year, he has his big year before him and it is expected that he will lead his team to a brilliant victory when the time comes.



PAT SHEEDY, '14.

Montana's pole vaulter is one of her strongest and most consistent men. Pat is not phenomenal, but he wins and that is the quality that brings victory. This is his third year in the pole vault and he should show this season the best that is in him.



DORNBLASER, '14.

Is the dark horse of this coming season. He didn't have to work to win last year, and so even to himself he is an unknown quantity. To any one who knows Dorn, however, knows that failure is impossible for the husky "bear," and if he has to, we know he will heave the shot a "mile," so success in this event is practically assured this next season.



NICK TAYLOR, '15.

Our premier distance man is out to win this season, and if he improves as much as he did last year, you may pin your faith on "socialism." Last year was Nick's first in any kind of athletics, and being up against hard men he didn't grab first place, but he will be stronger this year and so will be of invaluable aid to Montana in the century run.



## PETER RONAN, '14.

Is in his third year this spring, and is expected to grab at least one of the hurdles. Pete has the form and endurance, along with a willingness to work and if he doesn't win this year, it will be nothing less than the loss of a leg.



## HERB KUPHAL, '14.

Who took second in the half last year should be a first place "man" this spring. Last year was really his first active one in track and considering the creditable showing made then, we have every reason to hold him responsible for the half this spring.



## BILL VEALY, '14.

The loss of "Big" Bill Vealy is sincerely mourned by all Montana. He was a good, all around man, both in the hurdles and field events, and had he came back he would have undoubtedly been one of Montana's strongest assets. However, Bill leaves behind him a very enviable record and we sincerely hope he will be with us next year to duplicate it.



## GEORGE ARMITAGE, '14.

Who took second in the two-mile, gave one of the prettiest exhibitions of nerve and grit ever seen on Montana's field. George was up against a hard man, and while he lacked the form of his opponent, he made up for it in nerve. With a little coaching this year he should take his event easily, for he has all the requisites of a great runner.

## Track Review



THE 1912 track season is nothing to boast of. Montana lost fairly and squarely to M. S. C. by a score of 58 to 68, and was it not for the admirable fighting spirit shown by the crippled squad which represented U. of M. last year, our defeat would have been a galling one. The time of all the events was hopelessly slow, the only record that was broken, was the broad jump, formerly held by Malcomson, with a distance of 21 ft., which was broken by Owsley with a record of 21 ft., 1-4 in. Under existing conditions, however, we have a right to be proud of the men who represented us, and we feel that if it had not been for the loss of such men as Captain Cameron, Day and Wolfe, the tables would have been turned.

The prospects for 1913 are among the brightest in the history of the University. From the freshman class there is an abundance of promising material and several interscholastic stars of former meets. U. of M. is also strong in eligible vets. All of the point winners of last year are in school again, and in addition to this, Cameron, who was prevented from participating last year by a fractured ankle, is in prime condition, and Wolfe, Day and Weidman are all expected to place this year. The two meets which have been arranged with Idaho and M. A. C. will furnish an interesting season, and unless fate intervenes, Montana should capture the honors in both of the events.



## University of Montana Track Records

EVENT	HOLDER	RECORD	YEAR
100-yard dash	R. H. Cary	10 sec.	1906
220-yard dash	R. H. Cary	22 3-5 sec.	1906
440-yard dash	Leo Greenough	51 3-5 sec.	1906
880-yard dash	W. H. Maloney	2 min., 7 sec.	1908
1-mile run	W. H. Maloney	4 min., 45 3-5 sec.	1908
2-mile run	M. S. Bullerdick	10 min., 42 sec.	1908
120 high hurdles	R. H. Cary	16 2-5 sec.	1906
220 low hurdles	Joe Malcomson	25 3-5 sec.	1908
High jump	A. H. Toole	5 ft., 6 3-4 in.	1906
Broad jump	Merrit Owsley	21 ft., 1-4 in.	1912
Pole vault	Roy McPhail	11 ft., 1 1-2 in.	1906
Shot put	Paul Greenough	37 ft., 8 in.	1904
Hammer throw	Emmet Ryan	119 ft., 10 1-2 in.	1910
Discus	Ernest Patterson	107 ft., 9 in.	1907



*Inter-Class Meet*



NL



"INTER-SCHOLASTIC TRACK MEET"

### Interscholastic Records

EVENT	HOLDER	TIME
50-yard dash	Lloyd Denny, Flathead	5 2-5 sec.
100-yard dash	Plat Belden, Fergus	10 2-5 sec.
220-yard dash	Lloyd Denny, Flathead	23 1-5 sec.
440-yard dash	Edwin Hauser, Anaconda	53 4-5 sec.
880-yard dash	Richard Crum, Helena	2 min., 6 3-5 sec.
Mile Run	Richard Crum, Helena	4 min., 41 2-5 sec.
120-yard High Hurdles	Sam Dinsmore, Missoula	16 2-5 sec.
220-yard Low Hurdles	James Brown, Granite	26 4-5 sec.
	Allen Calbick, Flathead	
High Jump	— Logan, Gallatin	5 ft., 7 1-8 in.
Hammer Throw	— Davis, Park	138 ft., 2 1-2 in.
Broad Jump	Brayley Gish, Missoula	21 ft., 5 1-2 in.
Pole Vault	Lloyd Denny, Flathead	10 ft., 9 1-2 in.
Discus Throw	— Trainor, Missoula	113 ft., 6 in.
Shot Put	Emmet Ryan, Teton	43 ft., 2 1-2 in.
Relay Race	Missoula	1 min., 34 sec.

### Individual Champions

1904	J. Piggott	Helena
1905	Joe Horn	Anaconda
1906	Joe Horn	Anaconda
1907	Lloyd Denny	Flathead
1908	Brayley Gish	Missoula
1909	Clarence Bickford	Park
1910	James Brown	Granite
1911	Edwin Hauser	Anaconda
1912	Edwin Hauser	Anaconda

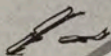
THE SENTINEL

1914.

---

# Activities of the Year



*"HEROES"**Black-a-day*

To Do or Die!!!

THE

**Canine Poison Squad**

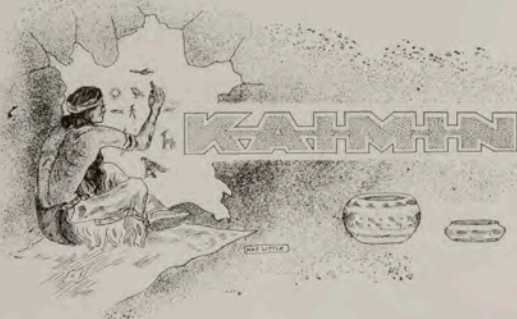
Believe in eating to live,  
and not eating to die.  
Therefore, have we, the  
representatives of the Palladium  
student rights and liberties,  
the Weekly Kaimin, come to  
investigate the food at the  
Dorm, and to discover which  
of the pernicious viands is re-  
sponsible for the epidemic  
now among us.

**Bring on your "Poison!"**



# THE SENTINEL

1914



## STAFF FOR THE FIRST SEMESTER

### The Editors.

Carl C. Dickey, '14 . . . Editor-in-Chief  
 Lewis W. Hunt, '15 . . . Managing Editor  
 Mildred Ingalls, '13 . . . Associate Editor  
 Merle Kettlewell, '15 . . . Society Editor  
 Winnifred Feiginger, '08 . . . Alumni Editor  
 Gladys Huffman, '13 . . . Local Editor  
 Rose Leopold, '13 . . . Assistant  
 Mabel Lyden, '14 . . . Exchange Editor

### Reporters.

G. O. Baxter, '15 . . . Carl C. Glick, '14  
 R. H. Wiedmah, '13 . . . Gertrude Zerr, '15  
 R. W. Wells, '13 . . . Lucius Forbes, '15  
 Bernice Selfridge, '15

### Business Staff.

Peter E. Hansen, '14 . . . Manager  
 Donald Young, '15 . . . Assistant  
 Roy Wilson, '15 . . . Assistant  
 Frances Curran, '16 . . . Assistant

## STAFF FOR THE SECOND SEMESTER

### The Editors.

Carl C. Dickey, '14 . . . Editor-in-Chief  
 Lewis W. Hunt, '15 . . . Assistant Editor  
 Mildred Ingalls, '13 . . . Assistant Editor  
 Merle Kettlewell, '15 . . . Society Editor

### Reporters.

G. O. Baxter, '15 . . . Leonard Daems, '16  
 Gertrude Zerr, '15 . . . Edwin Stanley, '15  
 L. E. Forbes, '15 . . . Rose Leopold, '13  
 Bernice Selfridge '15 . . . G. Matthewson, '16

### Business Staff.

Donald B. Young, '15 . . . Manager  
 Horace S. Davis, '14 . . . Assistant  
 Roy Wilson, '15 . . . Assistant



## Montana State College versus University of Montana

March 14, 1913

QUESTION—Resolved, That a minimum wage scale to be operative in the factories, work shops, department stores and sweated industries of America should be provided for by law.

AFFIRMATIVE—University of Montana.

} Payne Templeton  
} William Long

NEGATIVE—Montana State College.

} Thompson  
} Eberle

JUDGES—Judge Cheadle of Lewistown; Professor Kelley, Principal of Butte High School; Professor McCall, Principal of Billings High School.

DECISION—Two to one in favor of the affirmative.

**Washington State College versus  
University of Montana**

Missoula, April 18, 1913

QUESTION—Resolved, That a minimum wage scale, to be operative in workshops, department stores and factories, should be established by law, constitutionality granted

AFFIRMATIVE—University of Montana. } Horace Davis  
  } Gordon Watkins

NEGATIVE—Washington State College. } George C. Crockett  
  } Lester B. Vincent

JUDGES—R. A. O'Hara, Hamilton; Judge E. C. Day, Helena; M. Fitzgerald, Stevensville.

DECISION—Three to nothing in favor of the affirmative.

By this decision, the Championship of the Northwest, based on comparative scores, was awarded to the University of Montana.





NL

## Junior Prom

Given by the Class of 1914 in honor of the Class of 1913.

BURTON SMEAD

General Chairman

### MUSIC—

ALICE HARDENBURGH  
N. S. LITTLE  
MABEL LYDEN

### INVITATIONS—

H. H. KUPHAL  
P. J. MCCARTHY  
CATHERINE FINLEY

### PATRONS—

ESTHER BIRELY  
BESSIE WILDE  
JUNE WHITING

### LIGHTING—

GEO. L. KLEBE  
F. H. WHISLER  
C. O. DAY

### RECEPTION—

P. L. DORNBLASEE  
GEO. ARMITAGE  
E. B. CRAIGHEAD, JR.

### DECORATIONS—

GRACE V. SANER  
EARL SPEER  
C. S. JACKSON  
H. S. DAVIS  
BESSIE RHOADES





# DRAMATICS

## "You Never Can Tell"

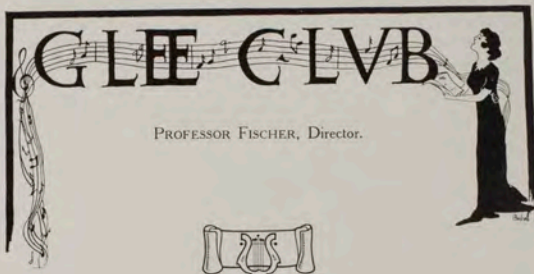
By BERNARD SHAW

Presented by the Dramatic Club, University Hall, April 25, 1913

### CAST OF CHARACTERS

VALENTINE	ARCHIE HOEL
CRAMPTON	MERRITT OWSLEY
PHILLIP CLANDON	NAT LITTLE
BOHUN	CECIL DOBSON
WAITER	CARL GLICK
MRS. CLANDON	EVELYN STEPHENSON
GLORIA CLANDON	DIANA ULINE
DOLLY CLANDON	STELLA DUNCAN
MAID	CLARA ROBINSON





PROFESSOR FISCHER, Director.

SOPRANO

EDNA CHADWICK  
CECILE JOHNSON  
LULU WRIGHT

GRACE LEARY  
MARY LUDDEN  
CLARA ROBINSON

SECOND SOPRANO

EUNICE DENNIS  
ALICE HARDENBURGH

CORINNE McDONALD  
VERA PRIDE

ALTO

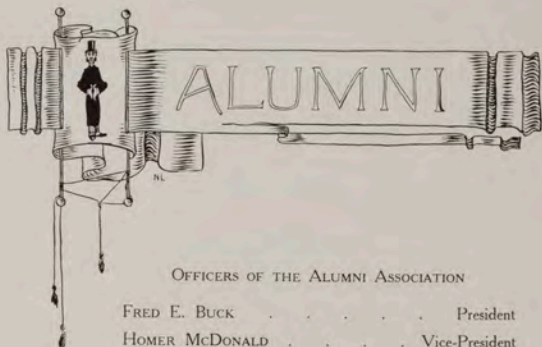
DIANA ULINE

EVELYN STEPHENSON  
LELLA LOGAN





**Organi  
zations**



OFFICERS OF THE ALUMNI ASSOCIATION

FRED E. BUCK . . . . .	President
HOMER McDONALD . . . . .	Vice-President
MARY HANSEN . . . . .	Secretary
BERTHA SIMPSON . . . . .	Treasurer

A. S. U. M. COMMITTEE

CHARLES F. FARMER . . . . .	Athletic
CHARLES PIXLEY . . . . .	Oratorical
ELOISE KNOWLES . . . . .	Debate
JOHN D. JONES . . . . .	Delegate-at-Large

## Alumni Members

### Anaconda.

HAROLD BLAKE, '92  
 AGNES McDONALD, '93  
 LESLIE M. SHERIDAN, '93  
 DELBERT I. GRUSH, '96  
 MRS. D. I. GRUSH, '96  
 FRANCES M. JONES, '98  
 WILLIAM J. TAIT, '10  
 WILLIAM A. BENNETT, '11  
 FLORENCE CATLIN, '11  
 GLADYS McCLEAN, '11

### Augusta.

WM. M. VAN EMAN, '09

### Billings.

HELEN GODDARD, '08  
 GEORGE E. BEAVERS, '09  
 MRS. DAN MCGREGOR, '11

### Butte.

GUY E. SHERIDAN, '02  
 MRS. JAMES GILLEY, '06  
 MARY M. FERGUS, '07  
 MRS. E. P. KELLEY, '07  
 JAMES H. MILLS, '07  
 MORTON SIMPSON, '11  
 CAROLINA P. WHARTON, '12

### Carlton.

ELOISE RIGBY, '03

### Columbus.

DAISY PENMAN, '10  
 EDNA P. ROSEAN, '10  
 BIRDE F. HUNTER, '12

### Corvallis.

CONRAD H. BOWMAN, '11

### Deer Lodge.

MONCURE COCKRELL, '04  
 LILLIAN WILLIAMS, '11

### Drummond.

LINDA FEATHEIMAN, '07  
 ORAL J. BERRY, '08

### Dupuyer.

ARBIE E. LEECH, '10  
 FLORENCE LEECH, '12

### Florence.

FRANK E. GLEASON, '11

### Forsyth.

C. O. MARCOYES, '03  
 PHOEBE A. FINLEY, '08

### Foster.

WALTER HAMMER, '04

### Fort Benton.

MRS. J. LEE SEDGWICK, '06

### Glendive.

ESTELLE BOVEE, '01  
 MRS. L. L. BENDON, '03  
 FREDERICK E. DION, '02

### Great Falls.

HOMER McDONALD, '02  
 MRS. E. P. GIBONEY, '05  
 JOHN R. HAYWOOD, '05  
 CHARLES S. McCOWAN, '11

### Hall.

MARY J. HENDERSON, '10

### Hamilton.

HELEN M. CRACKEN, '09  
 MRS. SIDNEY M. WARD, '09  
 SIDNEY M. WARD, '01  
 MONTGOMERY DE SMITH, '07  
 GILBERT D. McLAREN, '09  
 ANNABELLE ROBERTSON, '12

### Helena.

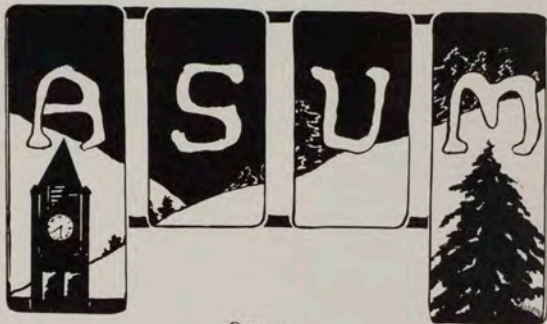
WILLIAM O. CRAIG, '02  
 WELLINGTON RANKIN, '03  
 ARTHUR E. BISHOP, '11  
 ARTHUR W. O'Rourke, '12  
 HELEN WEAR, '13  
 GERTRUDE WHIPPLE, '12

## Alumni Members

- Helmville.**  
DR. P. S. RENNICK, '00
- Hinsdale.**  
ALENE MCGREGOR, '11
- Isamay.**  
OLIVE LOVETT, '10
- Kalispell.**  
PAGE BUNKER, '04
- Lewistown.**  
ALICE G. GLANCY, '05  
JESSIE HANON, '11
- Lima.**  
ROY D. McPHAIL, '06
- Livingston.**  
MARY P. EVANS, '06
- Lo Lo.**  
EDNA HOLLENSTEINER, '10  
D. LAMAR MACLAY, '10  
BESSIE IRWIN, '12  
HOLMES MACLAY, '12
- Missoula.**  
ELOISE KNOWLES, '98  
CHARLES PIXLEY, '99  
CHARLES E. AVERY, '00  
GERTRUDE BUCKHOUS, '00  
BERTHA SIMPSON, '01  
FANNY MALEY, '02  
JEANETTE RANKIN, '02  
MARGARET RONAN, '02  
MRS. GEORGE WILCOX, '02  
MRS. CHARLES E. AVERY, '03  
MIRIAM HATHEWAY, '03  
MABEL JONES, '03  
LUCY LIKES, '03  
RELLA LIKES, '03  
MRS. OSCAR SEDMAN, '03  
MRS. DAVID MASON, '04  
MRS. FRANK BORG, '05  
ANNA F. CARTER, '05  
WM. O. DICKINSON, '05
- MRS. W. O. DICKINSON, '05  
CHARLES E. SIMONS, '05  
FRED E. BUCK, '06  
MAUDE BURNS, '06  
GRACE FLYNN, '06  
FLOYD HARDENBURGH, '06  
MRS. LYNN AMBROSE, '07  
JAMES H. BONNER, '07  
CHARLES S. DIMMICK, '07  
STELLA DUNCAN, '07  
THOMAS J. FARRELL, '07  
R. KING GARLINGTON, '07  
MRS. GILBERT HEYFRON, '07  
MAUDE JOHNSON, '07  
JOHN D. JONES, '07  
MRS. J. D. JONES, '07  
JENNIE MCGREGOR, '07  
ONA M. SLOANE, '07  
JOSEPH W. STRETT, '07  
MARGARET SUMMERS, '07  
AGNES BERRY, '08  
MRS. JAMES BONNER, '08  
WINNIFRED FEIGHNER, '08  
MRS. OLLIE HARRIS, '08  
MRS. JOHN LUCY, '08  
CLARISSA SPENCER, '08  
CECILE DWYER, '09  
CHARLES FARMER, '09  
MRS. CHARLES FARMER, '09  
MRS. RAY HAMILTON, '09  
BERNEY F. KITT, '09  
MRS. BERNEY F. KITT, '09  
ALICE WRIGHT, '09  
MRS. C. A. BISBEE, '10  
MRS. FRANK BONNER, '10  
MRS. MILTON HENDERSON, '10  
EDITH ROLFE, '10  
F. THAYER STODDARD, '10  
EVA COFFEE, '11  
RAY DINSMORE, '11  
MARY ELROD, '11  
HUGH FORBIS, '11  
ETHEL G. HUGHES, '11  
HARRY D. MACLAY, '11  
MASSEY S. McCULLOUGH, '11  
HARVEY G. SPENCER, '11  
LEO W. BAKER, '12  
CLARENCE J. FORBIS, '12  
NINA P. GOUGH, '12

## Alumni Members

- EARNEST E. HUBERT, '12  
 MAUDE S. JOHNSON, '12  
 MRS. DOUGLAS P. LUCAS, '12  
 MILTON MASON, '12  
 MAUDE B. McCULLOUGH, '12  
 GRACE RANKIN, '12  
 DAVID D. RICHARDS, '12  
 SHIRLEY B. SHUNK, '12  
 FRED E. THEIME, '12
- Plains.**  
 MRS. C. H. RITTENOUR, '01  
 NELL C. BULLARD, '08  
 MAEJORIE MASON, '10
- Phillipsburg.**  
 MRS. FRITZ KROGER, '02
- Pony.**  
 MARY D. GRAHAM, '10
- Radersburg.**  
 RALPH E. GILHAM, '07  
 MRS. R. E. GILHAM, '08
- Red Lodge.**  
 MRS. C. H. KEEL, '02
- Ronan.**  
 AZELIE SAVAGE, '12
- St. Ignatius.**  
 JOSEPH BUCKHOUS, '06  
 MRS. CHARLES DONALLY, '10
- Stanford.**  
 IONE L. ROLFE, '11
- Stevensville.**  
 JOSIE M. ROBB, '06  
 CHARLES A. BUCK, '08  
 ROY N. WHITESITT, '08  
 FLORENCE SLEEMAN, '12
- Superior.**  
 LIZZIE B. LEAF, '10
- Thompson.**  
 MARY E. BURKE, '10
- Townsend.**  
 CHARLES P. COTTER, '07  
 MRS. N. S. POOLE, '07  
 MARIE FREEZER, '09  
 OPAL M. CRONK, '10  
 FLORENCE AVERILL, '11
- Twin Bridges.**  
 EDNA FOX



OFFICERS

C. E. CAMERON	President
GLADYS FREEZE	Vice-President
ROSE LEOPOLD	Secretary
GEO. ARMITAGE	Manager

ALICE MATTHEWSON	} DELEGATES AT LARGE
JOHN SHEEDY	
R. H. WEIDMAN	
ALICE HARDENBURGH	
LUCIUS FORBES	
STELLA DUNCAN	} ALUMNI DELEGATES
MRS. DAVID MASON	

MANAGERS

FRED WHISLER	FOOTBALL
JOHN SHEEDY	ASSISTANT
GEO. KLEBE	BASKETBALL
HERBERT KUPHAL	PLAY
R. H. WEIDMAN	TRACK
HARRY SEWELL	DEBATE



# Penetrolia

7/10/14

FAYETTE WRIGHT	BEULAH VAN ENGELEN
ALICE YOUNG	FLORENCE D'RYKE
DAISY KELLOGG AMBROSE	GERTRUDE WHIPPLE
ANNE BEILENBERG	GLADYS HUFFMAN
MINTA M'CALL BONNER	MILDRED INGALLS
BLANCHE SIMPSON BORG	ROSE LEOPOLD
BESS BRADFORD	FLORENCE SLEEMAN
NELL BULLARD	ALENE M'GREGOR
MARY ELIZABETH BURKE	GLADYS M'LEAN
MONTANA BUSWELL	MRS. D. T. MASON
HAZEL BUTZERIN BISBEE	DAISY PENMAN
EVA COFFEE	ANNABELLE ROSS
MRS. O. J. CRAIG	MARJORIE ROSS
FRANCES CORBIN	ROBERTA SATTERTHWAITE
FLORENCE CATLIN	ONA SLOANE
AVERY MAY DICKINSON	MRS. ROBERT SIBLEY
MRS. C. A. DUNIWAY	EDITH STEELE
FAYE EVANS	MARY STEWART
LINDA FEATHERMAN	RUTH SMITH
MARY FERGUS	ALICE WELCH
WINNIFRED FEIGNER	MARY HANSEN
FRANCES FOSTER BONNER	MARY HENDERSON
MARIE S. FREESER	ANNA JO HUTTER
ALICE GLAHAN	LAURA S. JOHNSON
MAY GRAHAM	FRANCES JONES
VERNA GREEN	FRANCES KELLY
RUTH WARD GRUSH	RUTH KELLOGG
CARRIE WHARTON	ELOISE KNOWLES
FLORENCE LEECH	MAY MURPHY
	AGNES M'BRIDE
	ALICE MATHEWSON
	GLADYS FREEZE
	NINA GOUGH
	GRACE RANKIN
	VIOLA GOLDER
	CATHERINE WHITE
	MABEL LYDEN
	MARY SHULL
	ESTHER BIRELY
	GLADINE LEWIS
	JUNE WHITING



OFFICERS:

A. B. HOBLITT	President
C. S. JACKSON	Vice-President







OFFICERS

GLADYS FREEZE . . . . .	President
RUBY JACOBSON . . . . .	Vice-President
BESS WILDE . . . . .	Secretary
ALICE HARDENBURGH . . . . .	Treasurer

COMMITTEES

ALICE HARDENBURGH . . . . .	Meetings
IRENE TEAGARDEN . . . . .	Mission Study
GUSSIE GILLILAND . . . . .	Bible Study
CORA SCHILLING . . . . .	Finance
ROSE LEOPOLD . . . . .	Social

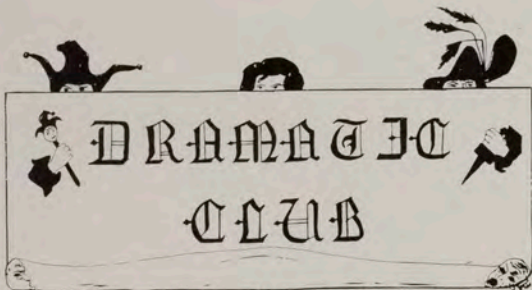


# THE CLUB WRITERS

GERTRUDE ZERR, President

- |                   |                   |
|-------------------|-------------------|
| MERLE KETTLEWELL. | G. F. REYNOLDS    |
| HARRIET HART      | GLADYS HEYWARD    |
| PETER HANSEN      | MRS. GLEN O'NEAL  |
| NAT LITTLE        | CARL DICKEY       |
| GUSSIE GILLILAND  | LEWIS HUNT        |
| MARIE LEBKICHER   | GEORGE ARMITAGE   |
| CARL GLICK        | ALICE MATHEWSON   |
|                   | BERNICE SELFRIDGE |





DRAMATIC  
CLUB

OFFICERS:

CARL GLICK . . . . .	President
ALICE MATHEWSON . . . . .	Vice-President
NAT LITTLE . . . . .	Secretary
TOM BUSH . . . . .	Manager

MEMBERS:

ESTHER BIRELY	EVELYN STEPHENSON
STELLA DUNCAN	CARL GLICK
MERLE KETTLEWELL	ROSCOE WELLS
BESS RHOADES	NAT LITTLE
LOUISE SMITH	ARCHIE HOEL
SADIE STABURN	EARL SPEER
DIANA ULINE	DONALD YOUNG
CORNELIA McFARLANE	MERRITT OWSLEY
ALICE MATHEWSON	E. P. KELLY
MILDRED INGALLS	CECIL DOBSON
FLORENCE MATTHEWS	COLIN CLEMENTS
GERTRUDE ZERR	TOM BUSH
CLARA ROBINSON	

# CLARKIA

A Literary Society for Women.

OFFICERS:

ROSE LEOPOLD	President
BESS RHOADES	Vice-President
RUBY JACOBSON	Secretary
GLADYS HEYWARD	Treasurer
ALICE MATHEWSON	Censors
MERLE KETTLEWELL	

MEMBERS:

EFFIE REED	GLADYS HEYWARD
HAZEL HAWK	RUBY JACOBSON
MABEL LEYDEN	MERLE KETTLEWELL
BESS RHOADES	GLADYS FREEZE
ALICE MATHEWSON	ROSE LEOPOLD



A Literary Organization for both Men and Women.

OFFICERS:

ALVA BAIRD	President
VERA L. PRIDE	Vice-President
CHAS. E. M. BAUER	Secretary
BERNICE SELFRIDGE	Treasurer

MEMBERS:

CHESTER BODEE	EDITH L. MERRIFIELD
ALVA BAIRD	VERA L. PRIDE
HELENE B. BOLDT	EVELYN M. STEPHENSON
CHARLES BAUER	BERNICE SELFRIDGE
COLIN CLEMENTS	EDWIN J. STANLEY
LUCIUS FORBES	PAYNE TEMPLETON
LUCILE KELLOGG	DOROTHY J. SIMON
WILLIAM LONG	NICHOLAS J. TAYLOR
	GERTRUDE A. ZERR



OFFICERS:

MILDRED INGALLS	President
HAZEL HAWK	Vice-President
CORA SCHILLING	Secretary-Treasurer

MEMBERS:

STELLA DUNCAN	ELOISE KNOWLES
SUZANNE STABERN	MARY STEWART
BERNICE SELFRIDGE	MILDRED INGALLS
ALICE MATHEWSON	HAZEL HAWK
GERTRUDE ZERR	CORA SCHILLING



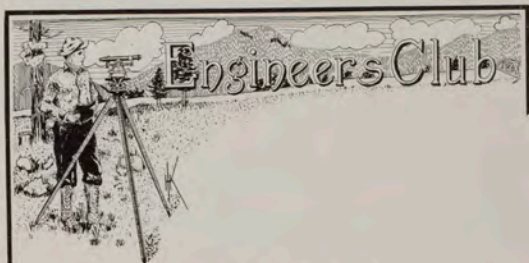
# Consumers' League

OFFICERS:

- |                              |                |
|------------------------------|----------------|
| STELLA DUNCAN . . . . .      | President      |
| GLADINE LEWIS . . . . .      | Vice-President |
| CORNELIA McFARLANE . . . . . | Secretary      |
| GLADYS HEYWARD . . . . .     | Treasurer      |

MEMBERS:

- |                 |                |
|-----------------|----------------|
| CORA HARMON     | CARRIE PATTON  |
| GLADYS HUFFMAN  | STELLA DUNCAN  |
| ELOISE KNOWLES  | MARY STEWART   |
| HELEN METCALF   | GLADINE LEWIS  |
| FLORENCE CARNEY | EUNICE DENNIS  |
| MABLE LYDEN     | GRACE LEARY    |
| CORA SCHILLING  | JEANETTE CLARK |



OFFICERS—FIRST SEMESTER.

R. D. SLOAN	President
H. H. KUPHAL	Vice-President
J. E. MONTGOMERY	Secretary
F. H. WHISLER	Treasurer

SECOND SEMESTER.

C. E. DOBSON	President
F. H. WHISLER	Vice-President
F. W. CARPINO	Secretary
S. R. DARROW	Treasurer

MEMBERS:

R. DEHLER	L. ROWLY
F. C. CURRAN	H. ANDERSON
H. TABOR	H. H. GWINN
G. DEHNERT	F. W. CARPINO
P. DEHNERT	LEROY BOWMAN
R. E. THOMAS	J. G. MONTGOMERY
G. H. HOSS	F. RICHTER
J. McMANUS	B. S. SMEAD
H. LANSING	F. H. WHISLER
L. E. DARROW	G. KLEBE
V. JANZEK	C. O. DAY
B. EVANS	H. KUPHAL
G. O'NEIL	C. DOBSON
R. SLOAN	

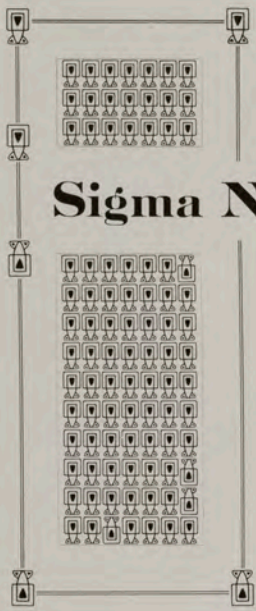


# THE SENTINEL

1914







THE SENTINEL  
1914



N.L.

---

# S i g m a K u

---

Gamma Phi Chapter. Established January, 1905

## FRATRES IN URBE.

FRANK E. BONNER	BERNIE F. KITT
JAMES H. BONNER	EARL F. HUGHES
JOHN M. EVANS	FLOYD HARDENBURGH
THOMAS E. EVANS	JOHN M. LUCY
MASSEY S. McCULLOUGH	HYLEN L. SMURR
F. HAROLD SLOANE	

## FRATRES IN UNIVERSITATE.

1913

CECH, H. DOBSON	CARL CAMERON
ROYAL SLOANE	

1914

CLIFFORD O. DAY	DONOVAN WORDEN
EARL L. SPEER	GEORGE ARMITAGE
HORACE S. DAVIS	LA RUE SMITH
HARRY F. SEWELL	

1915

DONALD B. YOUNG	FREDERICK RICHTER
KENNETH WOLFE	BERT PEPPARD
RALEIGH GILCHRIST	HARRY ADE
JOE TOPE	ROBERT BORLAND

1916

PAUL A. BISHOFF	CLAUDE SIMPKINS
DAVE BRONGER	VICTOR JANECK
BEVERLY EVANS	LLOYD ROBERTS
BRUCE METLEN	EARL DOWD

## SIGMA NU

Founded at Virginia Military Institute, 1869.

## CHAPTER ROLL.

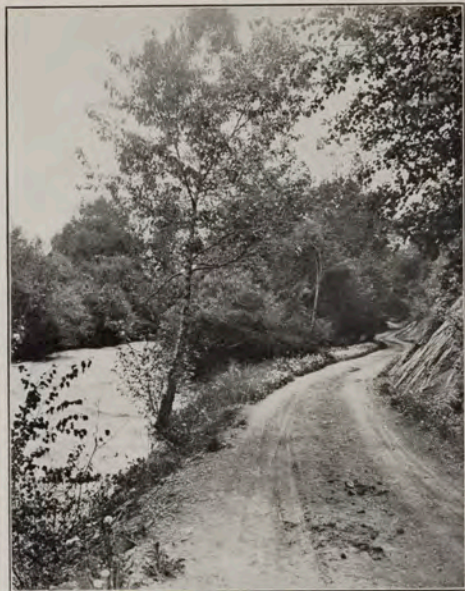
- ALPHA—Virginia Military Institute.  
 BETA—University of Virginia.  
 EPSILON—Bethany College.  
 ETA—Mercer University.  
 THETA—University of Alabama.  
 IOTA—Howard College.  
 KAPPA—North Georgia Agricultural College.  
 LAMBDA—Washington and Lee University.  
 MU—University of Georgia.  
 NU—Kansas State University.  
 XI—Emory College.  
 PI—Lehigh University.  
 RHO—Missouri State University.  
 SIGMA—Vanderbilt University.  
 EPSILON—University of Texas.  
 PHI—Louisiana State University.  
 PSI—University of North Carolina.  
 BETA BETA—DePauw University.  
 BETA ZETA—Purdue University.  
 BETA ETA—University of Indiana.  
 BETA THETA—Alabama Polytechnic Institute.  
 BETA IOTA—Mount Union College.  
 BETA MU—State University of Iowa.  
 BETA NU—Ohio State University.  
 BETA XI—William Jewell College.  
 BETA RHO—University of Pennsylvania.  
 BETA SIGMA—University of Vermont.  
 BETA TAU—North Carolina A. and M. College.  
 BETA UPSILON—Rose Polytechnic.  
 BETA PHI—Tulane University.  
 BETA CHI—Leland Stanford University.  
 BETA PSI—University of California.  
 GAMMA ALPHA—Georgia School of Technology.  
 GAMMA BETA—Northwestern University.  
 GAMMA GAMMA—Albion College.  
 GAMMA DELTA—Stevens Institute of Technology.  
 GAMMA EPSILON—Lafayette College.  
 GAMMA ETA—Colorado School of Mines.  
 GAMMA ZETA—University of Oregon.  
 GAMMA THETA—Cornell University.  
 GAMMA IOTA—State College of Kentucky.  
 GAMMA KAPPA—University of Colorado.  
 GAMMA LAMBDA—University of Wisconsin.  
 GAMMA MU—University of Illinois.  
 GAMMA NU—University of Michigan.  
 GAMMA XI—State College of Mines and Metallurgy, Mo.  
 GAMMA OMICRON—Washington University.  
 GAMMA PI—University of West Virginia.  
 GAMMA RHO—University of Chicago.  
 GAMMA SIGMA—Iowa State College.  
 GAMMA TAU—University of Minnesota.  
 GAMMA UPSILON—University of Arkansas.  
 GAMMA PHI—University of Montana.  
 GAMMA CHI—University of Washington.  
 GAMMA PSI—University of Syracuse.  
 DELTA ALPHA—Case School of Applied Science.  
 DELTA BETA—Dartmouth College.  
 DELTA ETA—University of Nebraska.  
 DELTA THETA—Lombard University.  
 DELTA GAMMA—Columbia University.  
 DELTA DELTA—Pennsylvania State College.  
 DELTA ZETA—Western Reserve University.  
 DELTA EPSILON—Omaha University.  
 DELTA IOTA—Washington State College.  
 DELTA KAPPA—Delaware College.  
 CHI—Cornell College.  
 DELTA LAMBDA—Brown University.  
 DELTA MU—Stetson University.  
 DELTA NU—University of Maine.

## SIGMA NU

## ALUMNI CHAPTERS.

BIRMINGHAM	LOUISVILLE	INDIANAPOLIS
SAN FRANCISCO	LEXINGTON	DAVENPORT
PUEBLO	SHELBYVILLE	TOLEDO
DENVER	MONTGOMERY (ALA.)	PORTLAND
DALLAS	PINE BLUFF, (ARK.)	PITTSBURGH
SEATTLE	LITTLE ROCK	NASHVILLE
WHEELING	WASHINGTON	BATON ROUGE
MILWAUKEE	COLUMBIA, (MO.)	BOSTON
SALISBURY, (N. C.)	ST. LOUIS	KANSAS CITY
CANTON, (OHIO)	NEW YORK CITY	MINNEAPOLIS
COLUMBUS	CHARLOTTE	RALEIGH
CLEVELAND	ATLANTA	PHILADELPHIA
DES MOINES	CHICAGO	WILMINGTON, (N. C.)

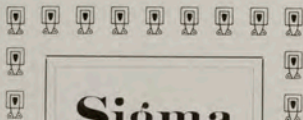






THE SENTINEL

1914



# Sigma Chi



THE SENTINEL  
1914



N.L.

# Σ ι γ μ α C h i

Beta Delta Chapter. Organized Locally January, 1903.  
Established September, 1906.

## FRATRES IN URBE.

DR. J. G. RANDALL, A. B. M. D.	ERNEST E. HUBERT, B. A.
GILBERT HEYFRON, LL. B.	WM. O. DICKINSON, B. S.
JOSEPH STREIT, B. S.	WALTER H. McLEOD
HUGH M. FERGUSON, B. E. E.	JOHN D. JONES, B. A., D. GUR.
R. KING GARLINGTON, B. S.	FRED E. BUCK, B. M. E.
THOMAS G. FARRELL, B. S.	EDGAR G. POLLEYS, B. S.
WM. G. FERGUSON, B. S.	HUGH T. FORBIS, B. S.
GILBERT T. REINHARDT	CLARENCE J. FORBIS, B. S.
EDWARD C. SIMONS, B. A.	F. THAYER STODDARD, B. S.
FRED ANGEVINE, B. A.	

## FRATRES IN FACULTATE.

PROF. FREDERICK C. SCHEUCH \*ROBERT H. CARY

## FRATRES IN UNIVERSITATE.

1913

ROSCOE W. WELLS

1914

GEORGE P. STONE	FRED E. WHISLER
E. P. KELLY	PATRICK T. Mc-CARTHY
PAUL GERVAIS	PETER RONAN
NAT S. LITTLE	PAUL L. DORNBLASER

1915

MERRITT M. OWSLEY	LEWIS HUNT
ARCHIE B. HOEL	ELZEARD DESCHAMPS

1916

C. THOMAS BUSH	WM. G. LONG
GREGORY S. POWELL	CLAUDE W. MOLCHOIR
HAROLD H. LANSING	NORMAN C. STREIT
COLIN C. CLEMENTS	ALVA E. BAIRD
W. NEILL McPHAIL	HERBERT B. MOLCHOIR
ROY E. THOMAS	EDWIN J. CUMMINGS
HENRY W. TABOR	FRANKLIN H. WOODY

## PLEDGES.

ARTHUR W. WRIGHT	CLYDE HUMPHREY
------------------	----------------

\*—Deceased.

## SIGMA CHI

Founded at Miami University, 1855.

## CHAPTER ROLL.

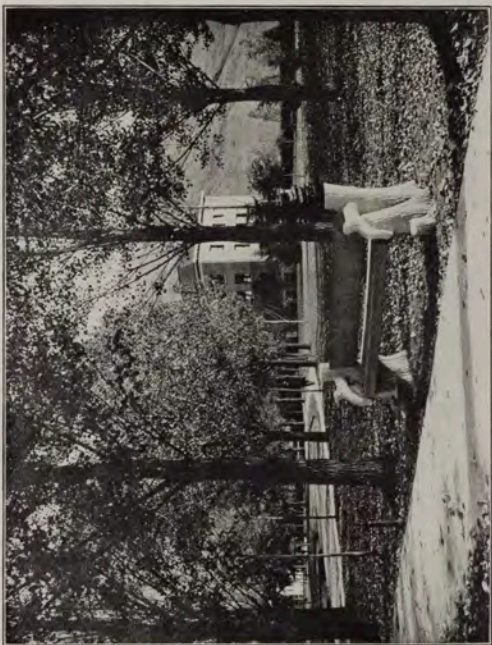
- ALPHA—Miami University.  
 BETA—University of Wooster.  
 GAMMA—Ohio Wesleyan.  
 EPSILON—George Washington University.  
 THETA—Pennsylvania College.  
 KAPPA—Bucknell University.  
 LAMBDA—Indiana University.  
 MU—Denison University.  
 XI—De Pauw University.  
 OMICRON—Dickinson College.  
 RHO—Butler College.  
 PHI—Lafayette College.  
 CHI—Hanover College.  
 PSI—University of Virginia.  
 OMEGA—Northwestern University.  
 ALPHA ALPHA—Hobart College.  
 ALPHA BETA—University of California.  
 ALPHA GAMMA—Ohio State University.  
 ALPHA EPSILON—University of Nebraska.  
 ALPHA ZETA—Beloit College.  
 DELTA CHI—Wabash University.  
 ZETA PSI—University of Cincinnati.  
 THETA THETA—University of Michigan.  
 LAMBDA LAMBDA—University of Kentucky.  
 MU MU—West Virginia University.  
 XI XI—University of Missouri.  
 TAU TAU—Washington University.  
 ALPHA THETA—Mass. Institute of Technology.  
 PHI PHI—University of Pennsylvania.  
 ALPHA ETA—University of Iowa.  
 ALPHA IOTA—Illinois Wesleyan.  
 ALPHA LAMBDA—University of Wisconsin.
- ALPHA NU—University of Texas.  
 ALPHA XI—University of Kansas.  
 ALPHA OMICRON—Tulane University.  
 ALPHA PI—Albion College.  
 ALPHA RHO—Lehigh University.  
 ALPHA SIGMA—University of Minnesota.  
 ALPHA UPSILON—University of S. California.  
 ALPHA PHI—Cornell University.  
 ALPHA CHI—Pennsylvania State.  
 ALPHA PSI—Vanderbilt University.  
 ALPHA OMEGA—Leland Stanford University.  
 BETA GAMMA—Colorado College.  
 BETA DELTA—University of Montana.  
 BETA EPSILON—University of Utah.  
 BETA IOTA—University of Oregon.  
 BETA ZETA—University of N. Dakota.  
 BETA ETA—Case School of Applied Science.  
 BETA THETA—University of Pittsburg.  
 DELTA DELTA—Purdue University.  
 ZETA ZETA—Central College of Kentucky.  
 ETA ETA—Dartmouth College.  
 KAPPA KAPPA—University of Illinois.  
 RHO RHO—University of Maine.  
 NU NU—Columbia University.  
 OMICRON OMICRON—University of Chicago.  
 UPSILON UPSILON—University of Washington.  
 PSI PSI—Syracuse University.  
 OMEGA OMEGA—University of Arkansas.  
 BETA KAPPA—University of Oklahoma.  
 BETA LAMBDA—Trinity, N. C.

## SIGMA CHI

## ALUMNI CHAPTERS.

ATLANTA, GA.  
BALTIMORE, MD.  
BOSTON, MASS.  
BLOOMINGTON, ILL.  
CHICAGO, ILL.  
CINCINNATI, O.  
CHARLESTON, W. VA.  
CLEVELAND, O.  
COLUMBUS, O.  
DAYTON, O.  
DENVER, COL.  
DETROIT, MICH.  
DULUTH, MINN.  
DANVILLE, ILL.  
HAMILTON, O.  
SPOKANE, WASH.  
HARRISBURG, PA.  
INDIANAPOLIS, IND.  
KANSAS CITY, MO.  
LINCOLN, NEB.  
LITTLE ROCK, ARK.  
LOS ANGELES, CAL.  
LOUISVILLE, KY.

MANILA, P. I.  
MILWAUKEE, WIS.  
MEMPHIS, TENN.  
MISSOULA, MONT.  
MADISON, WIS.  
NASHVILLE, TENN.  
NEW ORLEANS, LA.  
NEW YORK, N. Y.  
OKLAHOMA CITY, OKLA.  
PHILADELPHIA, PA.  
PITTSBURG, PA.  
PEORIA, ILL.  
PHOENIX, ARIZ.  
PORTLAND, ORE.  
SAN FRANCISCO, CAL.  
SALT LAKE CITY, UTAH  
SEATTLE, WASH.  
SPRINGFIELD, ILL.  
ST. PAUL, MINN.  
MINNEAPOLIS, MINN.  
ST. LOUIS, MO.  
TOLEDO, O.  
WASHINGTON, D. C.



THE SENTINEL

1914

**Iota**  
**Nu**







---

Y o t a N u

---



Local Organized 1908

FRATRES IN URBE.

RAY HAMILTON                      CHAS. JOHNSON  
RICHARD L. JOHNSON              MARSHALL HARNOIS

FRATRES IN UNIVERSITATE.

GRADUATE

DEWITT C. WARREN, '12 (Law.)

1914

HERBERT H. KUPHAL              CARL C. DICKEY  
JOHN P. SHEEDY                      BURTON SMEAD

1915

G. O. BAXTER                      LUCIUS E. FORBES  
GORDON MONTGOMERY              EDWIN J. STANLEY  
EVELYN NESBIT

1916

LANCELOT ROWLEY                  FRANCES E. DEHNERT  
LEONARD R. DAEMS                  EUGENE THURSTON  
AVERY W. DEHNERT                  JOHN M. SHROEDER

---

# Mu Sigma Epsilon

---



Engineers' Local. Organized 1909.

FRATRES IN URBE.

CHARLES FARMER                      HARRY D. MACLAY  
CLARENCE H. BUCK                    R. L. JOHNSON

FRATRES IN UNIVERSITATE.

1913

ROYAL SLOANE                        CECIL DOBSON

1914

FRED WHISLER                        HERBERT KUPHAL  
FREDERICK RICHTER

1915

J. G. MONTGOMERY

1916

HENRY TABOR                         BEVERLY EVANS  
EUGENE THURSTON

---

# Tau Kappa Alpha

---



National Honorary Fraternity for those participating in  
Debate and Oratory.

## MONTANA STATE CHAPTER.

DR. C. A. DUNIWAY  
GEORGE F. REYNOLDS  
ARBIE E. LEECH  
D. CREGIER WARREN  
ROBERT C. LINE  
MILLARD F. BULLERDICK

LUCIUS FORBES  
C. H. BOWMAN  
CARL DICKEY  
HARRY SEWELL  
ARTHUR O'ROURKE  
EDWIN STANLEY

## CHAPTER ROLL.

### ACTIVE STATE CHAPTERS.

COLORADO—University of Denver.

INDIANA—De Pauw University.

IDAHO—University of Idaho

MASSACHUSETTS—Harvard University.

MONTANA—University of Montana.

NEW YORK—University of New York.

OHIO

Miami University

University of Cincinnati

TENNESSEE—Vanderbilt University.

VIRGINIA—Randolph-Macon Colleges.

UTAH—University of Utah.

GEORGIA—University of Georgia.

NORTH CAROLINA—University of North Carolina.

WASHINGTON—University of Washington.

WISCONSIN—Lawrence College.

---

## Women's Pan Hellenic Council

---



OFFICERS:

GLADYS HUFFMAN . . . . . President  
GLADINE LEWIS . . . . . Vice-President  
GLADYS FREEZE . . . . . Secretary

MEMBERS.

KAPPA KAPPA GAMMA.

GLADINE LEWIS                      MILDRED INGALLS

KAPPA ALPHA THETA

GLADYS FREEZE                      ESTHER BIRELY

DELTA GAMMA

GLADYS HUFFMAN                      BESS WILDE

THE SENTINEL  
1914



**Kappa  
Kappa  
Gamma**



THE SENTINEL  
1914



N.L.

---

# Kappa Kappa Gamma

---



Beta Phi Chapter. Established March, 1909.

PATRONESSES.

MRS. J. M. KEITH                      MRS. F. C. SCHEUCH  
 MRS. H. T. WILKINSON

SORORES IN URBE.

ISABEL RONAN                      EVA COFFEE  
 ANNABELLE ROSS                  MRS. SHIRLEY THANE  
 MRS. GEORGE WEISEL              DOROTHY STERLING  
 MARY ELROD                      ABIE LUCY  
                                  MAUDE McCULLOUGH

SORORES IN UNIVERSITATE.

1913

MILDRED F. INGALLS              GLADINE LEWIS  
                                  ALICE MATHEWSON

1915

GRACE LEARY                      RUTH CRONK  
 CECILE JOHNSON                  JOSEPHINE E. HUNT

1916

GRACE MATHEWSON              IRENE MURRAY  
 JEANETTE CLARK                  LILLIAN SCROGIN  
                                  FRANCES BIRDSALL

PLEDGES.

HELEN McLEOD                      MARY LUDDEN

**KAPPA KAPPA GAMMA**

Founded at Monmouth, Ill., 1870.

## CHAPTER ROLL.

PHI—Boston University.	MU—Butler College.
BETA EPSILON—Barnard College.	ETA—University of Wisconsin.
BETA SIGMA—Adelphi College.	PI—University of California.
PSI—Cornell University.	BETA ETA—Leland Stanford, Jr., University.
BETA TAU—Syracuse University.	BETA LAMBDA—University of Illinois.
BETA PSI—Victoria College, Toronto.	UPSILON—Northwestern University.
BETA ALPHA—University of Pennsylvania.	EPSILON—Illinois Wesleyan.
BETA IOTA—Swarthmore College.	CHI—University of Minnesota.
GAMMA RHO—Allegheny College.	BETA ZETA—Iowa State College.
BETA UPSILON—W. Virginia University.	THETA—Missouri State University.
LAMBDA—Buchtel College.	SIGMA—Nebraska State University.
BETA GAMMA—Wooster University.	OMEGA—Kansas State University.
BETA NU—Ohio State University.	BETA MU—Colorado State University.
BETA DELTA—University of Michigan.	BETA XI—Texas State University.
XI—Adrian College.	BETA OMICRON—Tulane University.
KAPPA—Hillsdale College.	BETA CHI—University of Kentucky.
DELTA—Indiana State University.	BETA PI—University of Washington.
IOTA—De Pauw University.	BETA PHI—University of Montana.

## ALUMNAE CHAPTERS

NEW YORK CITY	LOUISVILLE	KANSAS CITY
ROCHESTER	GRANVILLE	DENVER
ATLANTIC CITY	ADRIAN	BLOOMINGTON, ILL.
SYRACUSE	INDIANAPOLIS	NEW ORLEANS
PHILADELPHIA	CHICAGO	BERKELEY
BUTLER	MILWAUKEE	MARION
COLUMBUS	ST. LOUIS	MINNEAPOLIS



THE SENTINEL

1914

---

# Kappa Alpha Theta



THE SENTINEL  
1914



N.L.

---

# Kappa Alpha Theta

---



Alpha Nu Chapter. Established July, 1909.

## PATRONESSES.

MRS. WARREN WILCOX      MRS. J. P. ROWE  
MRS. J. BONNER          MRS. H. KNOWLES  
MRS. C. E. SPOTTSWOOD

## SORES IN URBE.

MRS. JAMES BONNER      MRS. GILBERT REINHART  
MRS. JOHN LUCY          MISS MILDRED CLARK

## SORES IN FACULTATE.

ELOISE KNOWLES

## SORES IN UNIVERSITATE.

## POST-GRADUATE

STELLA L. DUNCAN

### 1913.

LOUISE E. SMITH          GLADYS FREEZE  
SUZANNE STABERN

### 1914.

ALICE HARDENBURGH      GRACE SANER  
BESS RHOADES            ESTHER BIRELY

### 1915.

MERLE KETTLEWELL.      MARGUERITE BONNER  
DIANA ULINE

### 1916.

DONNA McCALL            CORINNE McDONALD  
ISABEL GILBERT          GLADYS MCCARTHY  
ALPHA BUSE

## KAPPA ALPHA THETA

Founded at De Pauw University, 1870

## ACTIVE STATE CHAPTERS.

ALPHA—De Pauw University.  
 BETA—Indiana State College.  
 GAMMA—Butler.  
 DELTA—University of Illinois.  
 EPSILON—Wooster University.  
 ETA—University of Michigan.  
 IOTA—Cornell University.  
 KAPPA—University of Kansas.  
 LAMBDA—University of Vermont.  
 MU—Allegheny College.  
 RHO—University of Nebraska.  
 CHI—Syracuse University.  
 PHI—Stanford University.  
 OMEGA—University of California.  
 TAU—Northwestern University.  
 UPSILON—University of Minnesota.  
 PSI—University of Wisconsin.  
 SIGMA—Toronto University.

ALPHA BETA—Swarthmore College.  
 ALPHA DELTA—Goucher College.  
 ALPHA ZETA—Barnard College.  
 ALPHA KAPPA—Adelphi College.  
 ALPHA ETA—Vanderbilt University.  
 ALPHA GAMMA—Ohio State University.  
 ALPHA LAMBDA—University of Washington.  
 ALPHA NU—University of Montana.  
 ALPHA XI—Oregon State University.  
 ALPHA IOTA—Washington University.  
 ALPHA MU—University of Missouri.  
 ALPHA RHO—University of S. Dakota.  
 ALPHA PI—University of North Dakota.  
 ALPHA THETA—University of Texas.  
 ALPHAOMICRON—University of Oklahoma.

## ALUMNAE CHAPTERS.

GREENCASTLE	PITTSBURGH	SAN FRANCISCO
MINNEAPOLIS	CLEVELAND	BALTIMORE
NEW YORK CITY	SYRACUSE	OMAHA
CHICAGO	KANSAS CITY	EVANSTON
COLUMBUS	SEATTLE	PORTLAND
INDIANAPOLIS	TOPEKA	TORONTO
BURLINGTON	DENVER	MADISON
PHILADELPHIA	ST. LOUIS	STANFORD
LOS ANGELES	LINCOLN	PROVIDENCE



THE SENTINEL  
1914



N.L.

---

# Delta Gamma

---

Pi Chapter. Established September, 1911.

## PATRONESSES.

MRS. TYLAR B. THOMPSON    MRS. J. M. EVANS  
MRS. CHARLES HALL

## SORES IN URBE.

MRS. CLAIRE BISBEE	MRS. D. B. McGREGOR
MRS. FRANK BONNER	MISS HANNAH BOOK
MISS MAUDE JOHNSON	MRS. D. J. HAVILAND
MRS. EDGAR POLLEYS	MISS GRACE STODDARD

## SORES IN UNIVERSITATE.

1913.

G. CORNELIA McFARLANE	CECIL KRAMER
GLADYS HUFFMAN	FLORENCE MATTHEWS

1914.

MABEL LYDEN	BESS WILDE
-------------	------------

1915.

CORA HARMON	HILDA MARSH
WINNIFRED McLAUGHLIN	

1916.

RUTH NUTTING	FLORENCE RICHTER
FLORENCE CARNEY	CLARA ROBINSON

**DELTA GAMMA**

Founded 1872.

## CHAPTER ROLL.

BETA—Washington State University.  
 GAMMA—University of California.  
 EPSILON—Ohio State University.  
 ZETA—Albion College.  
 ETA—Buechel College.  
 THETA—University of Indiana.  
 IOTA—University of Illinois.  
 KAPPA—University of Nebraska.  
 LAMBDA—University of Minnesota.  
 MU—University of Missouri.  
 NU—University of Idaho.  
 XI—University of Michigan.

OMICRON—Adelphi College.  
 PI—University of Montana.  
 RHO—Syracuse University.  
 SIGMA—Northwestern University.  
 TAU—University of Iowa.  
 Upsilon—Leland Stanford, Jr., University.  
 PHI—University of Colorado.  
 CHI—Cornell University.  
 PSI—Goucher College.  
 OMEGA—University of Wisconsin.  
 ALPHA BETA—Swarthmore College.

## ALUMNAE CHAPTERS.

AKRON, OHIO  
 BALTIMORE  
 DENVER  
 DES MOINES  
 DETROIT  
 CHICAGO

IOWA CITY  
 KANSAS CITY, MO.  
 LINCOLN  
 LOS ANGELES  
 MILWAUKEE  
 NEW YORK CITY  
 OMAHA


PHILADELPHIA  
 PITTSBURG  
 RACINE  
 SEATTLE  
 ST. LOUIS  
 SAN FRANCISCO




THE SENTINEL  
1914



*Appropriation  
Day*



# The Summer School



THE SUMMER SCHOOL of 1912 was an unqualified success, both from an educational and a pleasurable point of view. It was the first held by the University for a number of years; advertising was delayed by a variety of causes for which the University was not responsible. The standards of admission were set high and consistently maintained; yet the plans formulated by President Duniway and carried out by his director, Prof. G. F. Reynolds, and by the faculty, were so well laid and the Summer School so clearly desirable a part of the University calendar, that the attendance even at this first session, considerably exceeded one hundred.

The work done both in quality and thoroughness fully equalled that of the regular semesters. The Summer School was in no sense simply a cramming school for teachers' examinations nor for college students making up conditions. Indeed almost every department found demands for graduate courses by students qualified to take them. These courses were especially successful, as were also those in methods of teaching. But in all the courses the students were interested and the faculty unanimous in commending their eagerness and industry.

# THE SENTINEL

## 1914

And everybody had a good time. It was remarkable how soon a healthy college spirit—a consciousness of unity and comradeship—showed itself. The numerous excursions—to Stevensville in motors kindly furnished by residents of Missoula, to the falls of the Rattlesnake, to the Indian dances—brought general goodfellowship. Notable, too, were the addresses to the Summer School, especially those by Albert Bushnell Hart of Harvard and Dr. E. B. Craighead, the president-elect of the University.

Thus the Summer School of 1912 was a success; that of 1913 is certain to be better still. It will no longer be an experiment for one thing, and for another the more than doubled appropriation makes possible an even more attractive program. Already the plans announced by Director Kemp makes this evident. The Summer School of 1913 will be better—it will also be bigger if Montanans recognize how fine an opportunity is offered them. That they will, nobody doubts.



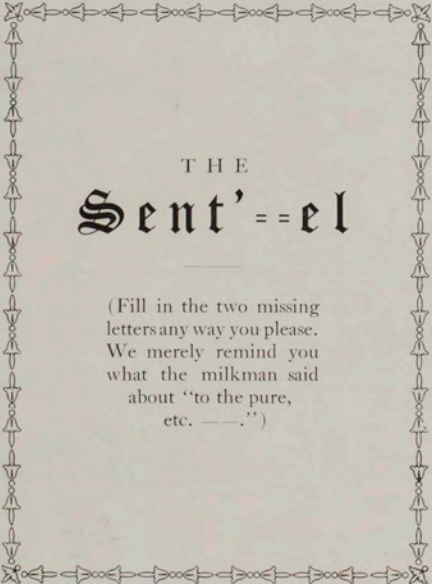
## We Thank You



AND NOW the 1914 Sentinel is finished. Whatever degree of success it may attain is due in great part to the kindness of our friends, without whose help a presentable book would have been impossible. Miss Eloise Knowles of the Art Department and Dr. G. F. Reynolds have aided with many valuable suggestions and criticisms. For many of the drawings in the book we are indebted to John Schopper, Bernice Selfridge, Diana Uline, Frances Birdsall and Mary Shull. Snapshots have been furnished by Gladys Huffman, W. O. Cain, Walter Conway and Fred Whisler. Miss Mary Stewart, George Stone and Gertrude Zerr have given us some excellent poems and stories. All the members of the Junior class, whether on the staff or not, have cheerfully done whatever was asked them to further the success of the book. Finally, special mention must be made of "our printers," the Missoulian Publishing Company, and in particular of Mr. Lebkicher and Mr. Abbott. Only their careful and willing co-operation has made it possible to get the Sentinel out by the time set for its appearance.

For the editors, the book has been a lot of work and worry and yet the finished product is not the "Perfect Annual" we planned it to be. And, moreover, what mistakes are made, are made. We can make no corrections nor explain away any misunderstandings in the next issue. Our work is put down to stay. Everything is over but the final verdict—your verdict. And that, after all, is what we have been working for. If in your judgment we shall have written up our records faithfully, if we shall have told you something of the men and women, students and faculty, who make the University, in short if we shall have brought to you even a faint breath of the spirit that pervades the campus of the University of Montana, we hope you will see fit to mention it to some one of the editors. And then we will feel repaid.

THE EDITORS.



T H E  
**Sent' = = e l**

---

(Fill in the two missing  
letters any way you please.  
We merely remind you  
what the milkman said  
about "to the pure,  
etc. —.")



*Fussers*



# Dedication

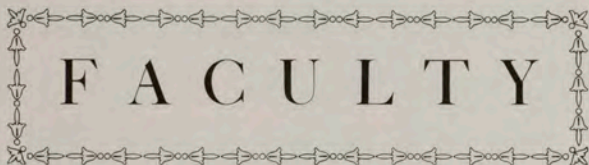
Dedicated respectfully  
and  
with deepest sympathy  
and tenderest  
regard to those whose  
feelings are  
about to be wounded.



*Senior Dash. → Junior Swing Out.*







# F A C U L T Y

(The most awful expose in recent years. Done without fear or favor.)

EDWIN BOONE CRAIGHEAD—"Our Prexy." Concerning whom we could not, would not, dare not say anything funny. He might consolidate us. Was raised on mint juleps, smokes the finest brand of Havana cigars, but lost his happy home when the lobby of the Florence was destroyed by fire.

WILLIAM ABER—Otherwise known as "Woolly." The toughest man on the faculty. Educated in the east, came west and turned cowboy, was converted. Now spends his time in giving warmth to Greek roots and building sunshades for the trees on the campus. Cannot tolerate a serious-minded student. Motto is "Eat, drink and be merry."

FREDERICK SCHEUCH—Educated at the Sigma Chi house at the Purdue U., and has never forgotten what he learned there. Became a college professor—that being the easiest way possible of earning a living. The Chesterfield of the faculty. Besides having a love of the beautiful, he is gifted with a drawing room figure. Spends his spare time in listening to Stoll reminiscence.

LEWIS CLARK PLANT—Has a style of hairdressing all his own. Has been mistaken several times for an escaped criminal. Loves to direct—should have been superintendent of a section-gang. Considers his subject of mathematics beyond the grasp of ordinary mortals. He means well.

GEORGE F. REYNOLDS—Our chief target. Studied for the stage under Anna Held and Eva Tanguay—but finding the Elizabethan drama much worse became an authority in it. A gracious matinee idol. Meets every Friday afternoon with the ladies of the "Culture Club."

HENRY W. BALLANTINE—Hard to say what he was before coming to the U. of M.—because we can't decide what he is now. "Verbose" is one of his favorite words. His legal manuscripts are being continually lost in the fire. That's mild. He leads a double life.

ALBERT NEWLON WHITLOCK—"My God! What a figure of a man!" Has never been disappointed in love. That's why! Knows what he knows, knowing what he knows. The rest is all legs. A fond, affectionate nature. When he isn't directing the affairs of the Law Department he is busy washing dishes. He, too, means well.

MARY STEWART—Conducted a matrimonial agency. Has had several narrow escapes. Educated in the west, but acquired an eastern accent. Reads the doubtful books that she may be able to stamp them with her disapproval. Her specialty is heart-to-heart talks.

J. D. DUNLAP—It is difficult to expose this man. He minds his own business too well. Regular clam. An agent for tooth-powder. Chews tobacco.

G. M. PALMER—"Palmer"—should he hammer. Educated in Illinois, so he says. When he's not talking, he's eating. His ideal is to combine both!

CAROLINE PATTON—Assistant canner in the library cannery. Her fond looks at the men are mistaken for warnings. Has a hard time maintaining the dignity of her position. Has an expressive glance.

ARTHUR W. RICHTER—Having devoted the greater part of his life to studying the child phenomena, Prof. Richter has decided to publish a book called "The Focus of the Age" or "Frederick."

JOSEPH H. UNDERWOOD—"Togo" has been mistaken several times for "Dago" (Ronan). This has caused much ill-feeling on both sides. We have not yet decided which is the injured party.

ELOISE KNOWLES—Art Department. The artistry in the "newer" dances. Special emphasis given to the interpretation of the "Rag."

WILLIAM GEORGE BATEMAN—Came from China. Has an antiseptic baby. Sings antiseptic lullabys.

WILLIAM R. PLEW—"The Senator." Sorenson's double. Poor Sorenson. Is acquiring an imposing looking front.

THADDEUS LUCIFER BOLTON—One of the Kewpie Kutouts. Serves tea in his office. Has managed to preserve a remaining wisp of hair.

JESSE P. ROWE—"Baldy" is a living advertisement for hair tonics of all kinds. Chief renown lies in the fact of his being the father of Tommy Rowe.

MORTON J. ELROD—The only man that ever talked down Alice Mathewson on the arsenic question. Since this memorable event has fallen into obscurity.

RICHARD HENRY JESSE, P. D. Q.—Dick is both broad-shouldered and handsome and has been engaged by Miss Stewart in her matrimonial campaign. Champion chalk-slinger. Smokes Tuxedo. Since he came to Montana his belt measure has increased.

FRANCES CORBIN—Runs a culture course. Statistics taken during one hour of her classes shows the following esthetic appreciation by the students.

Word "beautiful" used eighty-one (81) times, of which Carl Glick was guilty of twenty (20). If that isn't proof, what is? "Intoxicating" used twice, "sublime" four times.

GERTIE BUCKHOUSE—Runs canning factory and palm garden in connection. At present is organizing a legislature. Preparing a book called "How to look young."

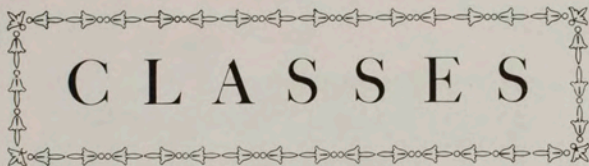
The rest of the faculty we were either afraid to say anything about or we didn't think they were worth it. Take your choice.





*Things we  
moresel at  
but  
cant explain*





# C L A S S E S

## J u n i o r s

The Juniors we must not exalt,  
Though deserving, we modestly halt,  
And whate'er they may say  
Take it any old way!  
But—remember that small grain of salt!

The Junior class is at present the only important class in school. Next year, however, there will be a change. The Senior Class will then be the leading class of the University.

## L a w y e r s

The Lawyers began way up high\*  
But that time has long since passed by,  
Now they're below\*\*  
Where all lawyers go,  
Be generous—for them heave a sigh.

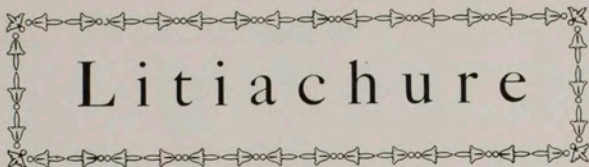
\*Top floor Main Hall.

\*\*Basement of Library.



*Name 'em and  
you can have 'em*





# Litichure

(With a Capital L.)

“Works” by eminent hands.

(Some gems brought to light in the recent short-story course.)

## Pomes

The year's at the spring  
The day's at the morn  
Morn's at eleven  
On Tuesday so fair,  
Elrod's at his desk  
I'm in my chair  
God's in His heaven  
—I wish I were there.

MARION SHERRARD—after Browning.

## She Worked

There was a young girl (quite a dresser)  
Who went off to College (God bless her!)  
And worked her way through  
But between me and you  
All that she worked was professors.

OME OMY—'23.

## Editorial

We students as a whole are very thoughtless creatures. We think only once, if we think at all. We have good intentions, but alas, they might as well be shipped at once for pavement. For instance, deduce a little. Every day we come up the library steps. Those steps can't last forever; stone will fade away into dust, and the dust will be blown away by the wind, thereby making more work for the street sprinkler. This is logic. Well, what are we going to do about it?

C. DICKEY.

## The Schoolteacher

Faster and faster her faltering steps beat it out over the dead leaves. She did not dare glance backwards. She was a western schoolteacher and she thought that one of her pupils was after her. She could almost feel his hot breath on the back of her neck. Faster and faster she chewed her gum. Her hair came undone. "I must look like a fright," she thought. And still she ran. In fact, she almost flew. She felt him gaining. At last he reached out a hand, caught her, and she stopped and turned. It was only a cowboy. He tied her hands behind her back.

"Come and cook our Christmas dinner for us," he said. "I was too bashful to ask you, so I thought I'd kidnap you."

Then with a long rope he tied her to his saddle horn and galloped off.

—MARION SHEERARD.

## The Tough Cowboy

Bill, the toughest cowboy in all the west, jumped off his horse and swung into the Double-X Bar.

"Give me a drink," he cried and then he shot the bartender dead.

The bartender hastened to do what Bill ordered, for he was afraid of Bill. When Bill had drunk the liquor—it was a sloe gin fizz—he shot the bartender dead.

"Give me another," he cried. Then he shot the bartender dead.

He drank this, and left the saloon, stopping at the door to put a shot in the bartender. The bartender died.

"Goodness, Agnes, I'm tired," said Bill when he got home. "I've had a hard day today." Then he shot himself dead. He was a tough cowboy.

—GEORGE ARMTAGE.



## The Triumph of Fate

"Ha! Ha!" and a clear mocking laugh rang out on the midnight stillness.

"Why do you laugh?" asked the man bending nearer.

"Why do I laugh?"

"Yes."

"Because—because I wish to."

"How dare you."

"John Morton, how dare I." She leaned closer, and her full, voluptuous eyes goggled him full in the face.

"Pardon me, of course, you have a right." His voice dripped sarcasm.

"But at what do you laugh?"

"See," she cried, her strident tones striking about his eyes. "Do you object? 'Tis one of my own funny stories."

"Hump," he said, sad-like.

—MARIE LEBKICHER.

## The Haunting Eyes

He stood in the center of the room and looked slowly about him. In every direction he turned he saw eyes—eyes that wept and eyes that laughed, staring eyes, closed eyes, eyes that sparkled and dead eyes. The candle flickered out. He felt haunted. "My eye," he cried, "what lot's of potatoes we'll have next year."

—G. ZERR.

## Thoughts

Sometimes I think that I am a convict just freed from behind the gray bars—at least, I think they are gray. Then I roll in the grass for pleasure. The grass is green, I think. Sometimes I imagine I am a man deserted by his wife, and then I hear her sing. It comes on the evening breeze to me, trembles a little and then stops. I mean her voice comes to me. I did love that voice once. Oh, yes, I did. But now, now all is different. I can never love that voice again. Sometimes I don't know what to think. Why think at all?

—NAT LITTLE.

## The Purl Ring

The evening bells rang out over the peaceful city. Little flakelets of snow, winter's downy covering, fell softly upon the quiet earth. In fact, everything was perfectly lovely.

Robert De Camps, the most popular rector in Bonner, sat in his study quietly fingering his last year's sermons.

"They'll do again," he said, sadly. "I won't need to buy any more and I can save up for a 'purl ring.' Of course, they'll do again." And the four walls echoed, "Again, again."  
GLADYS HEYWARD.

## Egoism, or---

How to Be Clevah, Original, Tempermental and Different—Absolutely Odd.

It's a secret. I don't know myself. The best way to run the bluff, however, is to cultivate a hypnotic stare.

C. C. GLICK, Contributor to ——

## Extra Feature

CONVERSATION AS SHE IS CONVERSED.

By Stella.

(Owing to the length, it was impossible to print anything but the title of this weighty work.)



# ATHLETICS

Special Feature to The Sentinel

## The Co-Ed Quarter

By "Dago" Roman.

"The sky was clear and cloudy," began the Dago. "A few of us more serious-minded students were reclining in the shade back of the Main Hall, discussing the advisability of the Order of the F. F. applying for membership in the Mexican Athletic Association. We had just decided that any one of the F. F.'s had it on any Mexican athlete alive, when suddenly a great cackling noise arose from behind the Gym; for all the world," went on Pete, "like a sewing circle. As this sort of thing is especially attractive to me, ever since the first time I went to Paris, I, accompanied by some few companions, walked over to the bleachers. Imagine our astonishment when we saw about thirty track girls, mainly Freshmen, on the cinder path limbering up preparatory to tearing off a quarter. All appeared to be in the pink of condition. After the usual dispute over the pole, Starter Hardenburgh, who was in pretty good condition herself, said: 'Now, girls, do try and finish within a half an hour or Musty will think I haven't made you keep strict training.' Then she made a graceful sign of dismissal and the girls started. After a wild scurry McFilton took the pole. For awhile she succeeded in fighting off the rest of the girls, but after a few minutes she was forced to give way, although her failure was not due to any lack of movement on her part, because she kept going all the time. When she wasn't running she was talking to herself, which is just as hard and requires just as much effort. My own opinion is that she was overweight. She ought to train down before the next race. About this time Coach Hardenburgh discovered our presence. Overjoyed that the girls would have some encouragement, she came over to ask us to stay and cheer. After some minutes of anxious waiting the girls reached the 220-yard post. Here an unfortunate accident occurred. Buse, who had been showing great form up to this point was spiked on the turn by some envious rival. Johnson went stale and walked the rest of the way in, finishing first. However, her record was disqualified because she hadn't finished



*Picnics*



running. Merrifield and Steve as usual ran a pretty race. I always did like Steve, anyway. The only thing that kept her from winning the race was the fact that she was handicapped by shin splints. Merrifield, too, was loping along at an easy pace and would have been a point winner if her hair hadn't come down. From here on the race was very exciting. 'Hip, Hip, Hurrah!' we on the bleachers chanted in unison. This put fresh courage into the racers and they began to show more pep. But a hurdle stood on the cinder path. With breathless interest we watched to see what would happen. Katty was the only sport in the bunch. She took it with perfect form, stopping in mid-air to brush a string of hair from her eyes. Now the race became wild and frenzied. There was hair pulling and kicking in abundance. My companions, unused to such scenes, turned away their eyes in dread, but I felt it my duty to watch them, even though my feelings were harrowed. Richter, on account of her superior build, finally overpowered the rest and forged over the tape line at a terrific pace. McCarthy finished second. In the wild hubbub that followed it was impossible to distinguish who was third, but I think it was Katty, because she was going at such a furious speed that she couldn't stop for three laps. A most pleasant feature of the race was that there was no ragging. Coach Hardenburgh told me afterward that just before the race Kelley had addressed them with a few words of fatherly advice. A medal is forthcoming from the Mexican Athletic Association for Kel, in recognition of this great work."

After listening to Ronan's recital, the editor was so overcome with emotion that he was unable to finish the Sen-t'el. Besides, there isn't any more space.



A unique and unparalleled  
feature of the

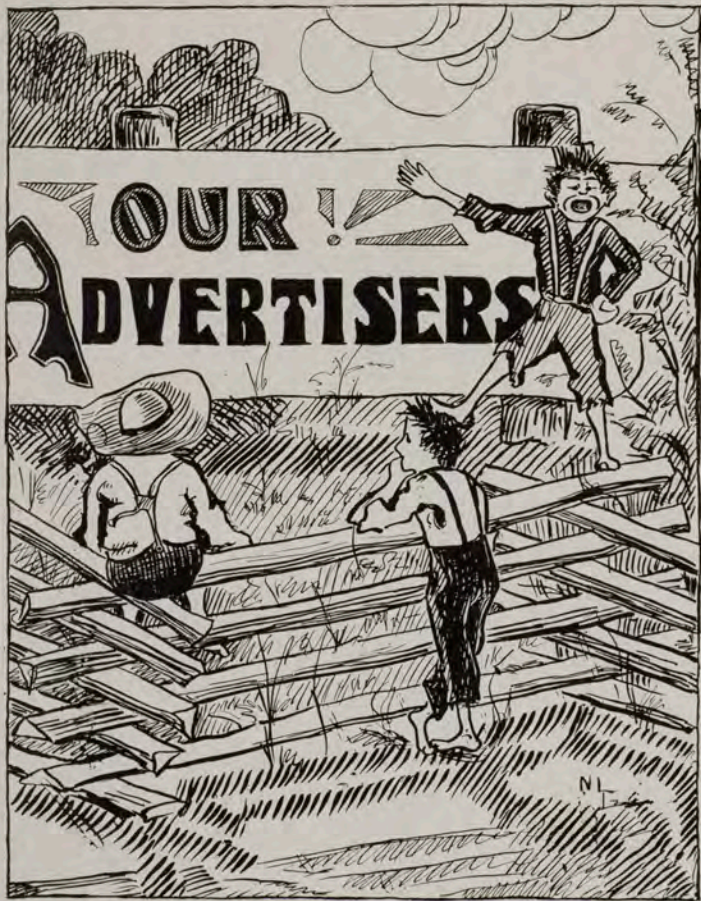
# 1914 Sentinel

is the fact that it is

# Out on Time

As for the rest, we only echo the words  
of the immortal Shakespeare when we say:  
*"We did our damndest."*---THE EDITORS.





# Missoula Mercantile Co.

Missoula, Montana



HIS store, the largest, best and most progressive in the University City, is the conceded headquarters for everything one needs to wear, to add to the comforts of home, to eat and use. Its twelve immense departments, each one a complete store itself, affords the widest variety from which to make selections, and everything sold is of the highest quality, though, through the agency of enormous purchases to supply our wholesale and retail trade, moderately priced.

Men's Clothing  
Dry Goods, Footwear, Women's Apparel  
Millinery  
Silverware, Cut Glass, Fine China  
Dinnerware  
House Furnishings, Office Furniture  
Sporting Goods  
Cameras, Tools of all kinds  
General Hardware, Pumps and Engines  
Farm Implements  
Vehicles and Wagons, Surveying  
Instruments, Groceries





---

1 9 1 2





C  
A  
L  
E  
N  
D  
A  
R



1 9 1 3

---

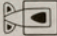
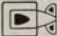


**A** SENSE of security as to quality is generally worth all you pay for the goods. Feel that way here; *always*. Never keep a B & A purchase that isn't *right*. We don't want your money if you don't want our merchandise. Make this store your down-town meeting place; there's a homelike spirit here that we want you to feel and take advantage of. Our time and courteous treatment are at your service whether you're looking or buying.

THE YOUNG  
MEN'S STORE

**B & A**

SEE OUR  
WINDOWS



**Rochester  
Pool and  
Billiard Hall**

411 Higgins Ave.

Carries an up-to-date line of

**Cigars and  
Tobaccos**

Five of the best Brunswick &  
Balk Pool and Billiard  
Tables

For a pleasant time and pastime  
call and see us

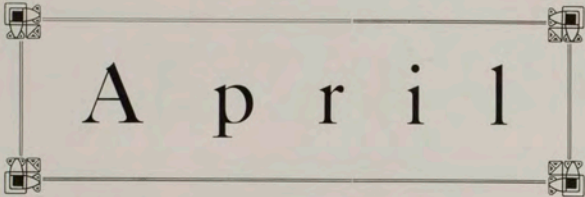
JAMES PIQUETT, Prop.

Only refined  
motion  
pictures  
shown  
here





**EMPRESS  
THEATRE**  
"THE HOUSE OF COMFORT"

Pro-  
gramme  
changed daily



# A p r i l

14. 1914 Sentinel begins work.
19. U. of M. debate with Pullman. Victory for Montana.
19. Kappa Alpha Theta gives dance at Elks Club.
22. Everybody goes to see the Parker Carnival.  
Singing on the steps.
23. Anxious fans watch the first league baseball game of the season from the law library windows.
24. Freshman class give four scenes from "Taming of the Shrew" in honor of Shakespeare's birthday.
25. Concert by Glee Club. Singing on the steps.  
Engineers' edition of the Kaimin. Turn off the steam.
26. Freshmen build "M" on Mount Sentinel.
27. Class Meet. Sophs win with 57½ points.  
Iota Nu dance.
29. Last number of Lecture Course. Adrian M. Newens in a "Message From Mars."



W. H. Smead  
Company



Montana Farm and  
Fruit Lands  
City Property  
Fire Insurance and  
Loans



Higgins Block, Phone 212-Red  
Missoula, Montana

THE  
Smoke House  
and Postoffice  
News Stand

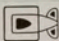

F. H. KNISLEY, Proprietor  
Masonic Temple



Cigars, Tobaccos, Billiards  
Pool, Newspapers, Magazines,  
Periodicals, Postcards



Lowney's Candies  
Pipe Repairing a Specialty



Simons  
Paint and Paper  
House

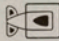
Missoula, Montana



Picture Frames  
Art Goods  
College Posters



312 AND 316 HIGGINS AVE.  
Missoula, Montana





Bureau of  
Printing

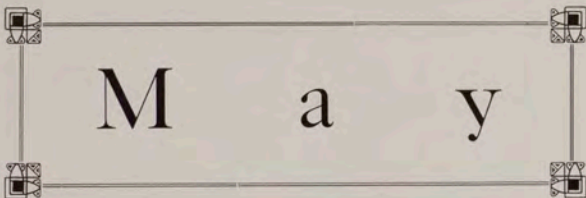


Better Printing for  
Better Folks  
Classy Society Printing  
Our Specialty



Union Block  
Missoula, Montana





# May

3. Big May Day Carnival parade. Menagerie imported for the big event. In Helena—Oratorical Contest. Montana takes third place.
4. Sigma Nu dance and supper at Elks' Club.
6. Cameron elected president of A. S. U. M.
7. Interscholastic Track Meet. May 7-10.  
Final Inter-High School Debate.
8. Dual Track Meet between Aggies and Montana. Did Montana "howl" that night? Oh, I guess so.
8. Girls' declamatory contest.
9. Field events. Singing on the steps. Boys' declamatory contest. Theta reception. Delta Gamma picnic. Annual banquet of Sigma Chi.
10. Car ride for visitors.  
Finals in field events. Final Jolly-Up. "Lend Me Five Shillings" by Varsity cast.
11. Theta picnic.
13. Freshmen plant vine with much ceremony.
14. Holiday—Arbor Day.  
Sigma Chi-Iota Nu picnic.
15. Owsley elected track captain.
17. Sophs and Frosh play ball.  
Sigma Chi dance.
18. Freshmen-Junior picnic—Sophomore moonlight picnic.
20. Special assembly and reception for our new president, Dr. Craighead. Mr. William Thurston Brown speaks on the tragedies of Ibsen and Shakespeare. Poor Shakespeare.
22. Last assembly of the year in charge of the Seniors. Dr. Duniway presents trophy to class of 1914. Awards books for high scholarship. Shorty Whisler to captain quintette.
23. Juniors elect officers for Senior year.
24. Inter-State Oratorical Contest. Reception and dance in gymnasium.
27. Where is Ed's frat pin?
28. Chick's frat ring is not to be seen on *his* finger. But—
29. Kappa Alpha Gamma Senior spread.
30. Memorial Day. Holiday. Rain. No picnics.
31. Instruction ends.  
Senior picnic given by Dr. and Mrs. Duniway on the campus.  
Junior Prom. Sad farewells.



"The King of Them All"  
"Flickerless, Pictures as Clear as  
a Bell!"



The Largest, Coolest  
and Best Ventilated Photo-play  
Theatre

We show the cream of the world's output of motion pictures which are Licensed Films. Always the latest pictures. Nothing shown over seven days old. Maurice Costello, Florence Turner, John Bunny, Alice Joyce, and all leading actors appear on our program of late and classy production which are always sure to please the most discriminating.

**I S I S**

Enjoy an excellent program in an excellent theatre. Always cool, fresh air. Six big doors, 14 large windows; six large fans. Can it be anything else but cool and comfortable? Hear our popular Soloist. Hear the popular Mr. Ed. LaVasseur and Miss Katherine Sullivan, Pianist.

**I S I S**  
Where Everybody Goes



**I S I S**  
Come, Join the Crowd



## Henley Eigeman & Co.

115 Higgins Avenue



**Grocers**



**WHITE SPRAY  
FLOUR**

The best made

Try a sack and be convinced



## Model Laundry Company

Cor. Alder and Stevens Street



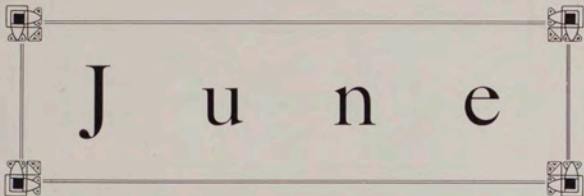
For terms and  
prices, see our  
student agent  
Mr. M. Nesbit



Bell 763

Ind. 754





# J u n e

1. Kappa Kappa Gamma Senior Banquet.
- 3-7 Commencement week.
3. Delta Gamma spread for Seniors.  
Penetration banquet. Annual musical at Assembly hall. 1913 Sentinel appears.
4. Reunion banquet of class of 1908.
5. Class day exercises. Present Dr. Duniway with cup. Plant tree.  
Alumni banquet.
6. 15th Annual Commencement Exercises. Address by President S. B. L.  
Penrose of Whitman College. Twenty-nine graduates receive sheepskins and degrees.  
University luncheon.  
President's reception and dance. Some more sad farewells.
7. Reunion of class of 1908 at Miss Feighner's.

## H. H. Bateman & Co.

*Headquarters for Pennants, Felt and Leather Pillows, Leather Skins, Fishing Tackle, Base Ball Goods, Hand-Painted China, Sinclair's Cut and Engraved Glass, Hurd's Fine Stationery, Fountain Pens, Latest Fiction, University Books, Student Supplies, Drugs, Drug Sundries.*

Prescriptions a Specialty.  
Graduate of Pharmacy in charge.

Drugs  
Books  
Stationery 

337 N. Higgins Ave.

Missoula  
Montana



AS A "SENTINEL"

A watch dog over  
the pursestrings of  
the people stands  
the Donohue store

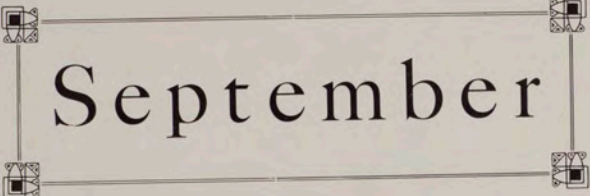
You can practice real economy here and save  
half your money on your personal needs, to  
*ease the expense of your college education. Try it.*

Dry Goods  
and  
Clothing

*Donohues*  
THE ECONOMY CENTER

Shoes and  
Ready-to  
Wear





# September

10. Registration day.
11. Assembly in the hands of students representing different organizations of the University.
13. New students' reception in the gymnasium.
15. Sophs and Frosh clash. Sophs parade down Higgins Avenue in native costume.
16. Y. W. C. A. hostess to all girls.
17. Freshmen parade Sophs down the main streets of the city. President calls a meeting of the conflicting parties.
20. First issue of the Kaimin.
23. Kappa Kappa Gamma gives tea for all new girls.
25. First meeting of the A. S. U. M. Baseball or track?
26. Juniors elect officers.
27. Freshmen-Sophomore battle. Victory for Frosh. Band organizes. Consumers' League reorganizes.
27. Freshmen and Sophomore dance.
28. Freshmen picnic.  
Alice H. and Roscoe W. enjoy the "movies." Oh, my!
29. Donovan stops in Butte on his way home from Helena.
30. Suffragettes reorganize.  
Alice Mathewson makes her appearance upon the campus. Who's that with you?
30. Professor Bolton arrives.

Quality  
Always

Licensed  
Photoplays

## Bijou Theatre

Presenting the strongest output  
of photoplays from the ten leading  
film manufacturers.

VITAGRAPH	PATHE
EDISON	SELIG
KALEM	BIODOLPH
ESSANAY	LUBIN
CINES	MELIES

Entire change of program

Sunday, Monday, Wednesday, Fri-  
days. Matinee daily 2 to 5 P. M.

It is your fault  
if you do not  
buy the best  
shoes made--

*We sell 'em*

### Dixon & Hoon

Foot Form Store

329 HIGGINS AVENUE

Missoula, . . . . Montana.

Dr. Asa Willard, Dr. W. R. Stryker

Hours:

9:30 to 12:00, 1:30 to 5:30,  
7:00 to 8:00

DOCTORS

## Willard and Stryker

OSTEOPATHS

Office and Treating Apartments  
Second Floor, First National Bank  
Building, Missoula, Montana.

## Regal Shoes and Oxfords

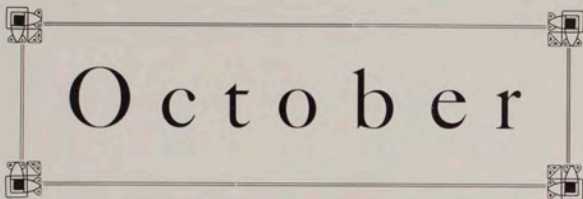
Snappy new styles.

\$3.50 \$4.00  
\$4.50 \$5.00

The only shoe made in the United  
States that gives you perfect fit  
and comfort, because they are  
made in one-quarter sizes, giving  
you twice the number for fittings.



FULLY GUARANTEED

# Schlossberg's



# October

2. Girls have spread in the rest room.
3. Serpentine dance on Higgins Avenue in honor of the new lights.
4. "M" formally given to class of 1916.
5. First A. S. U. M. dance.  
Missoula High School Football team plays with the "Bruins." Chilly day, chilly crowd and chilly game.  
Kuppa Kuppa Kokoas entertain. First and last appearance.
6. Herbie and Beeky go shooting. And on Sunday, too. Oh, horrors!
7. Gus Chisholm seen on the campus. He was not alone.
9. Arleen Kees leaves school ? ? ! ! ? ? Sh.
10. Bergen-Marx troupe first number of lecture course.  
Jimmie Brown discovers a skunk near "spooky rock."  
Freshmen elect officers.
11. Sigma Chi entertains at a dinner dance at the Elks' Club.
12. P. M. Slim crowd turns out to dig pipe line.  
Co-ed Prom one big success. Dornblitzer stars.
13. Professor Fischer gives first musical concert.
14. "Husky" wears squeaky shoes.
15. We all knew it was an onion, but Miss Buckhous declared it was a palm.
16. Studes vote to change constitution. Also vote for a half holiday to dig pipe line.
17. Half holiday granted to complete ditch for pipe leading to skating rink.
18. Bruins leave for Bozeman.  
A. S. U. M. dance.



## Those Unanswered Letters

Hadn't you better answer them soon? There's a deal of satisfaction in knowing that your letter writing is all caught up. If you are short of stationery get some of the new styles which we have just received. We have an unusually fine assortment of the kind that appeals to people of refined taste. Our highest grade papers are the finest goods the market affords. By the box, by the ream, by the pound, by the quire tablets. Get Our Prices and Note How Low They Are.

Missoula Drug Co.

Hammond Block

Missoula.



## The Coffee Parlor

Mrs. T. J. Walterskirchen  
Proprietor



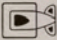
Light  
Lunches  
Served at all  
Hours



Home Cooking a Specialty  
Good Coffee

125 W. Main Street

Phones: Bell 318-Black; Ind. 1719




Come and  
See Us  
A. D. Price

Stationery  
Pennants  
Books and  
Office  
Supplies



111 Higgins Ave.




## Frank Borg

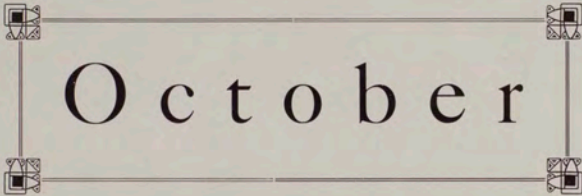
Jeweler and  
Optician



EVERYTHING RIGHT IN  
STYLE AND PRICE

223 Higgins Avenue





# October

( Continued )

19. U. defeats Bozeman 7 to 0.
21. Sigma Nu entertains all fraternity men at a smoker in their new home.
23. Dramatic Club organizes.  
Busy convocation.  
Trophies of Dr. Craig given to University at convocation.  
Mrs. Norquist, new instructor in vocal music, seen and heard for the first time.  
Professor Bolton prefers to speak rather than sing.  
The new political quartet renders some choice selections.
24. Montana gave formal welcome to President and Mrs. Craighead at Elks' Club rooms.  
Bruins leave for Utah on a week's absence.  
More ditch digging.
25. Freshmen entertain Sophs at a masquerade.
26. Sad tidings from the Grizzlies at Logan. Score, 17 to 0.
27. Powell returns from Pattee canyon with a black eye.
28. Red heads are heard on the campus.  
Straw vote taken for presidential preference. Teddy wins by great majority.
31. Delta Gamma entertain all new girls and faculty women at a Halloween tea.
31. Singing on the steps.

J. M. KEITH, President  
S. J. COFFEE, Vice-President

A. R. JACOBS, Cashier  
R. C. GIDDINGS, Assistant Cashier

# Missoula Trust and Savings Bank

MISSOULA, MONTANA



Capital Stock

\$200,000.00

Surplus, \$50,000



THREE PER CENT PAID ON TIME DEPOSITS

GENERAL BANKING BUSINESS TRANSACTED.

Accounts Solicited.

## Owen Kelly

Only the finest

*Key West and Domestic Cigars*



Turkish, Egyptian and Domestic  
Cigarettes Kept in Stock.

Confectionery and  
Fishing Tackle

POOL ROOM IN CONNECTION.

Missoula, Montana.

"WE DO NOT DISAPPOINT"

## The Butte Cleaners

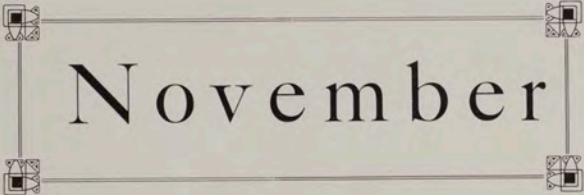
A. C. CREEK, Proprietor

Cleaning, Pressing  
and Repairing

LADIES' WORK A SPECIALTY  
FRENCH DRY CLEANING  
PROCESS

Work Guaranteed

Phones—Ind. 2226; Bell 446 Purple  
508 S. HIGGINS AVE.  
Missoula, . . . Montana



# November

1. A. S. U. M. night at Bijou and Nonpareil.  
"All studes get your photos taken." First call.
2. Bruins meet defeat at Salt Lake. Score 10 to 3.  
Hallowe'en party at Dorm for town girls. Big time. Good stunts.  
Kappa Kappa Gamma initiation.
3. Bright and fair. Nothing very remarkable except that Pat and Grace didn't take a walk.
4. Shirt waist dance in gym to welcome the return of the Grizzlies.
5. Holiday—election day.
8. Sigma Nu dance and football rally.
9. Glorious victory for U. of M. over Aggies. Score, 39 to 3.  
9 P. M. Reception and dance for Aggies in gym.
12. Kenneth Wolfe's new tassel cap creates a sensation.
14. Rally for football boys.  
Game with Pullman for November 16, called off.  
President Craighead leaves for the east to be gone until December 1.
15. Iota Nu party.
16. Sigma Chi dance.
18. Miss Patton and Miss Feighner have new brown dresses.
20. Assembly. Miss Fox, district secretary of Y. W. C. A., talks to studes.  
Y. W. C. A gives a tea in compliment to Miss Fox.
21. Miss Leech and Miss Lyman grace the halls with their presence.
22. Football boys leave for games with Spokane and Willamette University.
23. The Grizzlies prepare the Gonzaga turkey for Thanksgiving with the score of 16 to 7.  
Second football team distinguishes itself in various ways at Victor.
27. 12:30 P. M. Thanksgiving vacation begins.  
9 P. M. Iota Nu dance at Barber and Marshall hall.
28. Grizzlies eat their turkey without Willamette dressing. Score, 30 to 9.

# Nonpareil Confectionery

We  
solicit your  
patronage



O. M. ELTON, Proprietor

## Ice Cream

Vanilla  
Strawberry and  
Chocolate

always on hand  
Special flavors made up to order.

Plain and Fancy  
Bricks

suitable for all occasions.

Wholesale and Retail

## Candy

Practically all our candy is made in our own kitchen by clean, healthy white people. We allow no diseased person to remain in our employ. We never knowingly sell, or allow to be made up for sale, anything in our line of food products that is not clean and wholesome.

## Soda Fountain

You will find the same standard of quality maintained here, also together with fair prices and courteous treatment.

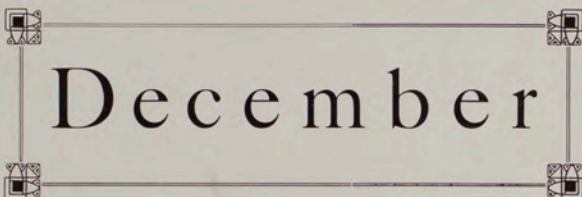


# Nonpareil Confectionery

136 HIGGINS AVENUE

BELL TELEPHONE 62





# December

1. Football boys return from trip.  
All librarians of the city dine with Miss Buckhous. Awful crowd.  
Gladys Huffman treats Dorm girls to turkey spread from 10:30 P. M. to 4 A. M.
2. The day after vacation all sleepy and "I haven't looked at a book" heard on every side.  
Grace Mathewson returns with new corduroy dress.  
Carl Glick with brown suit and red mackinaw.  
Gladys Huffman with brown coat.  
Gladys Heyward with a diamond and wedding ring. "Awful" nice to go home for vacation.
4. Rinks first flood—no freeze.  
Excited whispering among the boys over Hi Jinx.
5. Girls' basketball team makes first appearance.
6. What's the matter with the Kaimin?
9. At last—Freshmen edition out in red print. Fine looking bunch adorns front page.
10. Lost—An Iota Nu frat pin; finder return to H. Kuphal.
13. Again no Kaimin.
16. Christmas number out.
17. Smead elected football captain for 1913.
19. Hi Jinx "vudville."
20. Vacation begins.

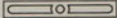
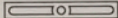


The Minute  
Lunch  
Cafe

W. E. Wheeler, Prop.  
509-511 N. Higgins Avenue.  
THE PLACE WHERE EVERY-  
ONE EATS

*Lunches and Short Orders  
Served at All Hours*

Open Day and Night.  
The White Front.



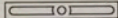
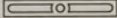
EVERYTHING FIRST CLASS,  
NEW AND MODERN  
Bell 1998; Ind. 576

The  
Penwell  
Hotel

Opposite New Milwaukee Depot.

Rates \$1.00 and up.  
Rooms Single or En Suite  
with Private Baths

Under New Management.  
MRS. J. D. O'BRIEN, Prop.

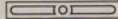


Home Plate  
*Pool and Billiard Hall*

Finest Cigars  
and Tobacco  
and Candies

163 WEST FRONT STREET  
Opposite Florence Hotel

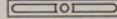
J. A. WASHER, Proprietor.

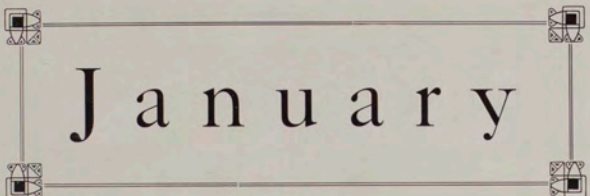


Dunstan's  
Printing, Stationery and  
Office Supplies  
Bound Books and  
Magazines

MAGAZINE SUBSCRIPTION  
AGENCY

324 North Higgins Avenue.





# J a n u a r y

6. School opens.
7. Consolidation project begun.
8. More consolidation.
9. Sigma Nu "dorg" visits classes.
10. Track sweaters become noticeable among the fair sex.
11. Frats pledge.
13. A Kaimin is seen.
14. Still more consolidation.
15. Dr. Reynolds and wife entertain at a tea.
16. "University and the State."
17. Equal Suffrage club presents "On a Roof Garden" at the Harnois.
25. Sophomore and Junior sleigh ride. Everybody went except the Sophs and Juniors.
27. Exams.
30. Aggies defeated by Montana in basketball game.
31. "Dummy" hangs from tower.  
End of first semester.

MEET ME AT  
The  
South Side  
Pharmacy



Ice Cream  
Candy  
and Soft Drinks

J. W. Lister  
Books and Stationery  
Drawing Instruments



Better instruments for less money.  
Imported direct from manufac-  
turers.

*Your Order for Fine Card  
Engraving Solicited*

114 EAST MAIN STREET

GO TO  
Rowland  
THE  
Jeweler



For Watches, Diamonds  
Jewelry and Optical  
Goods

Special attention given to Fine  
Watch and Jewelry repairing.

114 East Main Street

Trust and Savings Bank Building  
Missoula, Montana.

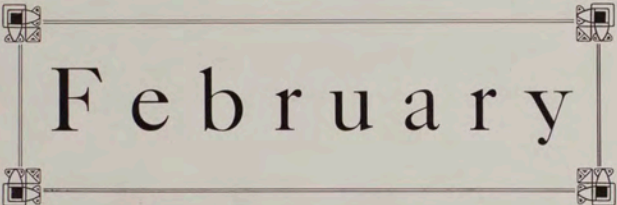
Bell 143 — CALL — Ind. 1787  
Fashion  
Club

*Cleaners, Dyers  
and Tailors*

Your old clothes can be cleaned to  
your satisfaction, and we can also  
make you a new suit.

SOUTH HIGGINS AVENUE

Missoula, Montana



# February

1. Kappa Kappa Gamma initiate.
2. Fire at the Dorm.
3. Kappa Alpha Theta gives matinee dance in gymnasium.
4. Registration day.  
Athletic ball.
7. Dr. Wiley's lecture.
8. Delta Gamma initiates.
13. Penetralia takes in five members.  
Montana defeated by Utah in basketball game. Score 37 to 17.
14. No dummy.  
Delta Gamma gives dancing party.
15. Sigma Chi initiates.
16. Professor Fischer gives recital at University hall.
17. Professor Fischer and Mrs. Norquist's pupils give music recital in University hall.
19. Assembly. Seniors swing out and so do the Juniors.
21. Charter Day. Big celebration.  
Junior-Freshman basketball game.
22. Saturday. A holiday—Washington's birthday.  
Thetas initiate. Kappas have spread. Delta Gamma's have party.
24. Lucius E. Forbes elected editor of the 1915 Sentinel.
25. Pledging again.

ONLY COMPLETE  
**Cab and Transfer**  
LINE IN THE CITY



We handle all Show and Commercial Business

Our rigs never miss a train.  
Ambulances at all hours.

**Fine Livery of Every  
Description**

Automobiles and Taxicabs at all

Hours.  
GREEN & ELLINGHOUSE, Props.  
Both Phones.

**The Residence  
Districts**

**The Hammond  
Additions**

Include that portion of Missoula lying between South Higgins Avenue and the State University. No one doubts that it is the most perfect spot, for a home, to be found anywhere in the state. Why not secure your building lots now. Easy terms. Moderate prices

**South Missoula Land  
Company**

Room 9, Hammond Block

**Reilly's**

Missoula's Best Grocery and Provision House

**Purveyors to the  
People**

Our Leaders.

BARRINGTON HALL STEEL  
CUT COFFEE  
CERETANA FLOUR

PILLSBURY'S BEST XXXXXX  
FLOUR

24 Years in Business.

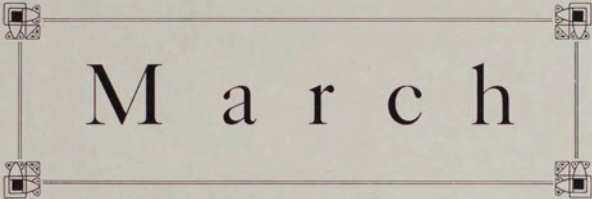
Bell, 98      Phones      Ind., 544



WITHIN the University there are intellectual and social groups, distinct, but each with a welfare in common. The proof of the success of their objectives is their attitude toward the essentials. Coal is an essential, and Original Round-up Coal, bought from the Western Montana Coal Company, is the universal choice of those who know—University people, faculty and undergraduates.

**Western Montana  
Coal Co.**

BOTH PHONES 758



# M a r c h

2. Y. W. C. A. conference closes.
5. Dobson elected president of Engineers' Club.
7. Unification bill passes.  

Appropriation day. Hurrah for the legislature, even if they didn't pass consolidation.
14. Montana debaters win from Aggies.
15. 2 A. M. Long and Templeton are welcomed home by an enthusiastic crowd.

PHIL KENNY, Proprietor

## Vienna Cafe

107 West Main St.  
Near American Theater

For Good Eating, We Excel  
Private boxes for ladies and  
parties

*Try Our Famous Coffee*

Open day and night

Ind. Phone 470 Bell Phone 76-Blk

Tray orders promptly attended  
to at all hours.

For Your Vacation, take a

K  
O  
KODAK  
A  
K

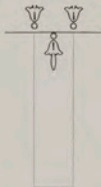
WITH YOU

At Smith's Drug Store  
and South Side  
Pharmacy

Agents for Eastman Kodaks and  
Kodak Supplies

## Missoula Hotel

JAS. A. WALSH, Manager



*Modern in Every Respect*

## COTRELL and LEONARD

ALBANY, NEW YORK



Makers of  
*Caps  
Gowns  
and  
Hoods*

To the American Colleges and  
Universities from the Atlantic to  
the Pacific

*CLASS CONTRACTS*  
a Specialty



ROLLIN H. McKAY  
COMMERCIAL  
PHOTOGRAPHER  
HIGGINS BLOCK, MISSOULA, MONT



Views of Montana University  
and Typical Montana Scenery

KODAK FINISHING  
PICTURE FRAMES

ALL CLASSES OF BONDS USED IN YOUR BUSINESS ARE FURNISHED  
BY US AT LOWEST RATES

## Surety Bonds

COURT BONDS, FREIGHT CHARGE BONDS, CONTRACT BONDS, OFFICIAL BONDS, FRATERNAL ORDER BONDS, EMPLOYEES BONDS COVERING ALL POSITIONS, NOTARY PUBLIC BONDS, BANK DEPOSITORY BONDS, BURGLARY AND PLATE GLASS INSURANCE, LIABILITY AND ACCIDENT INSURANCE OF EVERY DESCRIPTION

FRIEDERICHS & PRICE  
GENERAL AGENTS

United States Fidelity and Guaranty Company

29 UNION BANK BUILDING

HELENA, MONT.

## Scandinavian- American State Bank

OF MISSOULA



A General Banking  
Business  
Transacted

INTEREST PAID ON  
TIME DEPOSITS

EUROPEAN PHONE 19

## Hotel Shapard



F. L. SHAPARD, Prop.

Private Baths : Electric Bell  
Hot and Cold Water  
Steam Heat

*Cafe in Connection*

Centrally located, two blocks from  
N. P. Depot on Higgins Ave.

Missoula, Montana.



# Montana State College of Agriculture and Mechanic Arts

FOUNDED 1892

BOZEMAN, MONTANA

A college of highest rank, and strong  
in its advantages to the  
individual student.

“Education for  
Efficiency”

Four years' college courses leading to the de-  
gree of B. S.

**1—Agriculture.**

(a) Agronomy, (b) Animal Industry  
and Dairying, (c) Horticulture.

**2—Engineering.**

(a) Civil, (b) Electrical, (c) Mechan-  
ical.

**3—Industrial Arts and Sciences.**

(a) Biology, (b) Chemistry, (c) Home  
Economics, (d) Mathematics-Physics,  
(e) Vocational English.

Courses not leading to a bachelor's degree are  
offered:

1—School of Home Economics and Me-  
chanic Arts.

2—School of Agriculture.

3—School of Pharmacy with the degree  
of Ph. C.

4—Art School.

5—Music School.

---

For catalog and information, address the President,  
J. M. Hamilton, Montana State College, Bozeman

Always Stop at the House of Comfort

# The Palace Hotel

MISSOULA, MONTANA

The place where they all feel at home.

Finest and Most  
Reasonable Cafe  
in the State

Rooms without bath . \$1.00 and \$1.50, single  
Rooms without bath \$1.50, \$2 & \$2.50, double  
Rooms with bath . . . \$2.00 and \$2.50, single  
Rooms with bath . . . \$3.00 and \$3.50, double



MULLEMER, HALLE

& RICK, Proprietors

Bell Phone 238; Ind. 572

Prompt  
Service

Bicycle and  
Light Repair  
Work

# J. P. Reinhard

Hardware  
Crockery

Quality  
Goods

104 W. Main St., Missoula, Mont.



---

Portraits  
Amateur  
Finishing



---

Art  
Goods

Missoula  
**Art**  
Company

Higgins Avenue  
next to bridge



---

Frames  
AND  
Mouldings

---

Place Cards  
AND  
Novelties

Brain Food and Pure and Wholesome

## MEATS



To develop the muscles. This is what the Varsity boy needs. You always get the best of everything at the

### Union Market

110-112 Higgins Ave. Missoula, Montana

Bell 126

Ind. 514

## Louvre Cafe

F. W. HERWEG, Prop.

*Try Our Famous  
Noon Day  
Lunch*

MOST COMPLETE LINE OF DELICATESSEN Dainties IN MISSOULA

109 WEST MAIN STREET  
Missoula, Montana.

## J. W. Kennedy

Plumbing  
and  
Heating

Phone 80-Red  
Missoula, Montana

## Florence Laundry

"LAUNDERS OF QUALITY"



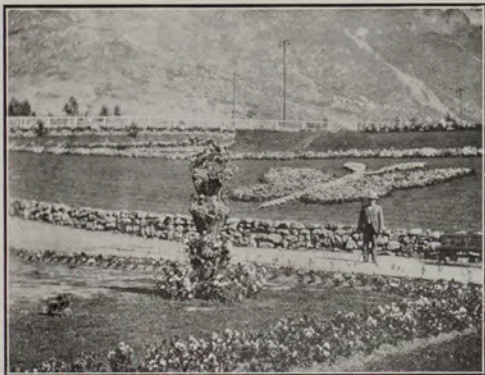
Quick Service  
Good Work



Bell 48--PHONES--Ind. 409





# Columbia Gardens



The  
Great Playgrounds  
of Butte, Montana





THE  
**U**niversity of **M**ontana

MISSOULA

EDWIN BOONE CRAIGHEAD, M. A., LL. D., D. C. L.,  
President of the University.

---

Standard College Courses

Greek, Latin, French, Spanish, German, English, Literature, Public Speaking; History, Philosophy, Economics, Library Science, Psychology, Education, Fine Arts, Music, Physical Culture; Biology, Botany, Forestry, Physics, Chemistry, Geology, Mineralogy, Mathematics.

Professional Departments

Engineering—Mechanical, Electrical, Civil, Chemical. Law—Three years' course leading to professional degree. Forestry—Short course in January, February, March, co-operating with U. S. Forest Service, District No. 1. Education—The State University's diplomas and certificates of qualification have legal value as teachers' certificates in high schools.

Extension Department

Correspondence courses in fifteen Departments. Lecture courses by fifteen professors and instructors.

Summer School

Six weeks of collegiate instruction, June 9 to July 18, 1913. Special courses to meet the needs of teachers.

First semester begins Tuesday, September 9, 1913.  
Second semester begins Tuesday, February 3, 1914.

---

For detailed Information, apply to THE REGISTRAR  
Missoula, Montana





# Western Montana National Bank

MISSOULA, MONTANA



Surplus and Profits

\$50,000

Capital, \$200,000



U. S. DEPOSITARY

G. A. WOLF, President JNO. C. LEHSOU, Vice-President  
J. H. T. RYMAN, Cashier.

GOLDEN RULE  
STORE

GOLDEN RULE  
STORE

Co. COEN-FISHER Co.

“Missoula's Popular Trading Center”

— F O R —

DRESS GOODS, SILKS, DOMESTICS, HOSIERY, UNDER-  
WEAR, CORSETS, DRESS TRIMMINGS, DRUG  
SUNDRIES, SUITS, COATS, DRESSES, MIL-  
LINERY, SHOES.

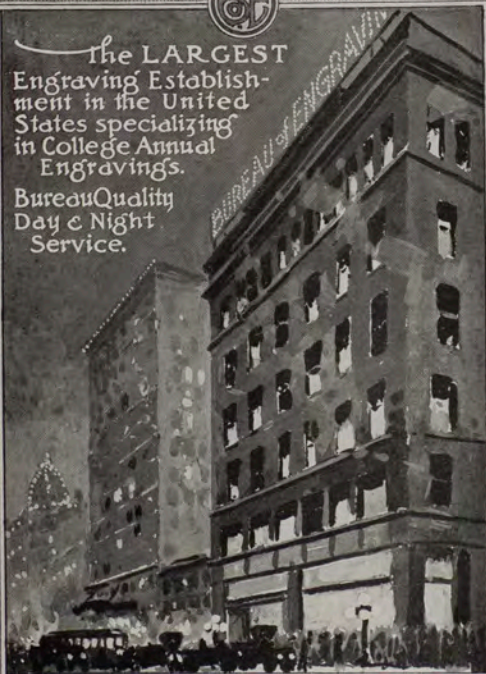
EXCLUSIVE AGENCY FOR THE FAMOUS STEIN-BLOCH  
CLOTHING FOR MEN AND YOUNG MEN.

Complete Line of Furnishings and Hats.



The LARGEST  
Engraving Establish-  
ment in the United  
States specializing  
in College Annual  
Engravings.

Bureau Quality  
Day & Night  
Service.



BUREAU OF ENGRAVING INC.  
• MINNEAPOLIS •  
MILWAUKEE • OMAHA • DES MOINES

Thomas F. Farley  
Clarence M. Tubbs

## Thos. F. Farley Co.

Reliable  
Grocers

611 Woody Street

MISSOULA, MONTANA  
Telephone 54

Your patronage respectfully  
solicited.

## D. T. Curran

DEALER IN

Builders' Supplies  
Stoves and  
Ranges  
and General  
Hardware

Headquarters for Guns, Rifles  
Ammunition, Fishing Tackle.

## Polleys Saw Mill Company

F O R

Short Mill Wood

Single loads, green . . . \$2.75  
Single loads, dry . . . \$4.75  
One order of three or more  
loads, green, \$2.50 each

THE BEST  
LUMBER  
AND ALL KINDS OF BUILD-  
ING MATERIAL

Bell 414      Phones      Ind. 424

The Polleys Lumber  
Company

Branch Office, 115 Higgins Ave.

## Martin's Art Needle Shop Cloaks, Suits and Dresses

On the way to Missoula's Postoffice

## Helena Meat Company

Wholesale and Retail  
Fresh Meats  
Helena, Montana



OFFICERS

F. S. LUSK, President                      E. A. NEWLON, Cashier  
F. H. ELMORE, Vice-President      NEWELL GOUGH, Asst. Cashier

# The First National Bank

OF MISSOULA, MONTANA

CAPITAL . . . \$200,000  
Surplus and Profits . \$125,000

A GENERAL BANKING BUSINESS TRANSACTED

Interest paid on deposits in our Savings Department  
at 3 per cent per annum.

Oldest National Bank in Montana



# The Knabe



Hoyt-Dickinson Piano Co., *Agents*

[ 221 HIGGINS AVENUE ]  
[ MISSOULA, MONTANA ]

# [ The A. M. Holter ] [ Hardware Company ]

HELENA, MONTANA





LUMBER DEPARTMENT



# Anaconda Copper Mining Company



Mills at Bonner, St. Regis and Hamilton  
with an annual production of one hundred and sixty million feet.

The Largest Manufacturers of

Rough & Dressed  
Pine Lumber  
in the West.



Complete factories for the manufacture  
of Box Shooks, Sash, Doors, Mouldings  
and all kinds of Interior Finish.



Anaconda Copper Mining Co.  
BONNER, MONTANA



LUMBER DEPARTMENT





Phones:  
Independent 510  
Bell 110

# Missoulian Publishing Company

Printers  
Binders

BLANK BOOK MAKERS  
LOOSE LEAF BINDERS  
and Sheets of all kinds.

Fine Booklet  
Business  
and Society  
Printing

ENGRAVED CARDS AND  
INVITATIONS

UNIVERSITY and SCHOOL  
Productions of every  
description.



[ This book was printed and  
bound in our office and is  
a product of everyday work ]

---

Missoulian Publishing Company

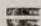
MISSOULA, MONTANA



Get the **ELECTRIC HABIT**  
FOR DOING YOUR WORK—READY WHEN YOU WANT IT



The Electric Chafing Dish, Table Stove, Percolator, Tea Pot, or Plate, are the most modern as well as convenient of cooking appliances. **EVERYTHING ELECTRICAL IS.**

 Missoula Light and Water Company



[ A cordial invitation is extended to the pupils to  
visit our Greenhouse and Nursery at any time ]



Healthful  
Invigorating  
and an



Ideal  
Spring  
Tonic

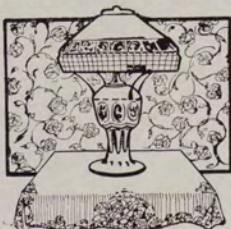
All You Can Expect

Satisfaction  
in  
every  
Purchase.



Barber & Marshall  
South Side Grocers

Under the Study Lamp



The pleasure of reading depends on the quality of the lamp as well as the book. You should see our display of lamps for every room, for every use. They match our china in beauty and reasonableness of price and you know how it would be impossible to say more than that.

J. A. CAVENDER.



